

TM 5-4120-337-34P

TECHNICAL MANUAL

**DIRECT AND GENERAL SUPPORT MAINTENANCE
REPAIR PARTS AND SPECIAL TOOLS LISTS
(INCLUDING DEPOT MAINTENANCE AND SPECIAL TOOLS)**

**AIR CONDITIONER, VERTICAL: COMPACT,
SELF-CONTAINED, AIR COOLED, ELECTRIC MOTOR DRIVEN
115 VOLTS, A.C. 50/60 HERTZ, SINGLE PHASE
9,000 BTU/HR COOLING, 6,000 BTU/HR HEATING
(HARVEY W. HOTTEL MODEL CV-9-5/6-15**

FSN 4120-935-1609

HEADQUARTERS, DEPARTMENT OF THE ARMY

6 SEPTEMBER 1974

CHANGE }
NO. 1 }

HEADQUARTERS
DEPARTMENT OF THE ARMY
WASHINGTON, D.C., 27 March 1987

Direct and General Support Maintenance
Repair Parts and Special Tools List

AIR CONDITIONER, VERTICAL: COMPACT,
SELF-CONTAINED, AIR COOLED, ELECTRIC MOTOR DRIVEN
115 VOLTS, A.C. 50/60 HERTZ, SINGLE PHASE
9,000 BTU/HR COOLING, 6,000 BTU/HR HEATING
(HARVEY W. HOTTEL MODEL CV-9-5/6/15)
FSN 4120-935-1609

TM 5-4120-337-34P, 6 September 1974, is changed as follows:

Page 16, figure 6, item 3, FSN and P/N is changed to read "3110-00-124-9076",
"02-01099-2oz

By Order of the Secretary of the Army:

Official:

R. L. DILWORTH
Brigadier General, United States Army
The Adjutant General

JOHN A. WICKHAM, JR.
General, United States Army
Chief of Staff

DISTRIBUTION:

To be distributed in accordance with DA Form 12-25A, Direct and General Support
Maintenance requirements for Air Conditioner, Vertical Compact, Self-Contained,
9000 BTU Cool/6000 BTU Heat, 115V, AC, 50/60HZ, 1PH (CV-9-5/6-15)

TECHNICAL MANUAL }
 No. 5-4120-337-34P }

HEADQUARTERS
 DEPARTMENT OF THE ARMY
 WASHINGTON, D. C., 6 September 1974

DIRECT AND GENERAL SUPPORT MAINTENANCE
 REPAIR PARTS AND SPECIAL TOOLS LIST

AIR CONDITIONER, VERTICAL: COMPACT,
 SELF-CONTAINED, AIR COOLED, ELECTRIC MOTOR DRIVEN
 115 VOLTS, A.C. 50/60 HERTZ, SINGLE PHASE
 9,000 BTU/HR COOLING, 6,000 BTU/HR HEATING
 (HARVEY W. HOTTEL MODEL CV-9-5/6/15)
 FSN 4120-935-1609

Current as of 15 July 1974

	Listing Page	Ilus Figure
SECTION I. INTRODUCTION -----		
II REPAIR PARTS LIST -----	1	
Group 01. Casing, guards, grilles, drain tubes, panels and filter -----	1	1
02. Junction box assembly -----	6	2
03. Control panel assembly -----	12	3
04. Block-off panel assembly -----	14	4
05. Fan assmbly-----	14	5
06. Motor assembly -----	16	6
07. Heater assembly-----	16	7
08. Wiring harnesses clamps -----	17	8
09. Mist eliminator, evaporator and condenser coils, valves, dehydrator, receiver, sight glass and piping -----	19	9
10. Valves, pressure switches and piping-----	24	10
11. High and low pressure switches and enclosure -----	28	11
12. Compressor assembly -----	28	12
13. Accessory items -----	29	13
SECTION III. SPECIAL TOOLS LIST (Nonapplicable)		
IV. FEDERAL STOCK NUMBER AND REFERENCE NUMBER INDEX -----	44	

Section I.

INTRODUCTION

1. Scope

This manual lists repair parts, special tools, test, measurement, and diagnostic equipment (TMDE), and other support equipment required for operation and performance of direct support, and general support maintenance of the air conditioner.

2. General

a. Section II — Repair Parts List. A list of repair parts authorized at the direct support and general support levels for the performance of maintenance. The list also includes parts which must be removed for replacement of the authorized parts. Parts lists are composed of functional groups in ascending numerical sequence, with the parts in each group listed in figure and item number sequence,

b. Section III — Special Tools List. Not applicable.

c. Section IV — Federal Stock Number and Reference Number Index. A list, in ascending numerical sequence, of all Federal stock numbers appearing in the listings, followed by a list, in alphanumeric sequence, of all reference numbers appearing in the listings. Federal stock number and reference numbers are cross-referenced to each illustration figure and item number appearance.

3. Explanation of Columns

The following provides an explanation of columns found in the tabular listing in Section II.

a. Source, Maintenance, and Recoverability Codes (SMR).

(1) *Source Code.* Source codes are assigned to support items to indicate the manner of acquiring support items for maintenance, repair, or overhaul of end items. Source codes are entered in the first and second positions of the Uniform SMR Code format as follows:

Code	Definition
PA	Item procured and stocked for anticipated or known usage.

Code	Definition
PB	Item procured and, stocked for insurance purpose because essentiality dictates that a minimum quantity be available in the supply systems.
PC	Item procured and stocked and which otherwise would be (coded P4 except that it is deteriorative in nature.
PD	Support item, excluding support equipment, procured for initial issue or outfitting and stocked only for subsequent or additional initial issues or outfittings. Not subject to automatic replenishment.
PE	Support equipment procured and stocked for initial issue or outfitting to specified maintenance repair activities.
PF	Support equipment which will not be stocked but which will be centrally procured on demand.
PG	Item procured and stocked to provide for sustained support for the life of the equipment. It applied to an item peculiar to the equipment which, because of probable discontinuance or shutdown of production facilities, would prove uneconomical to reproduce at a later time.
KD	An item of a depot overhaul/repair kit and not purchased separately. Depot kit defined as a kit that provides items required at the time of overhaul or repair.
KF	An item of a maintenance kit and not purchased separately. Maintenance kit defined as a kit that provides an item that can, be replaced at organizational or intermediate levels of maintenance.
KB	Item included in both a depot overhaul/repair kit and a maintenance kit,
MO	Item to be manufactured or fabricated at organizational level.
M-F	Item to be manufactured or fabricated at the direct support maintenance level,
MH	Item to lx, manufactured or f fabricated at the general support maintenance level.
MD	Item to be manufactured or fabricated at the depot maintenance level.
AO	Item to be assembled at organizational level.
AF	Item to be assembled at direct support maintenance level.
AH	Item to be assembled at general support maintenance level.
AD	Item to be assembled at depot maintenance level.
XA	Item is not procured or stocked because the requirements for the item will result in the replacement of the next higher assembly.
XB	Item is not procured or stocked. If not available through salvage, requisition.

<i>Code</i>	<i>Definition</i>
XD	A support item that is not stocked. When required, item will be procured through normal supply channels.

NOTE

Cannibalization or salvage may be used as a source of supply for any items source coded above except those coded XA or XD.

(2) **Maintenance Code.** Maintenance codes are assigned to indicate the levels of maintenance authorized to use and repair support items. The maintenance codes are entered in the third and fourth positions of the Uniform SMR Code format as follows:

(a) The maintenance code entered in the third position will indicate the lowest maintenance level authorized to remove, replace, and use the support item. The maintenance code entered in the third position will indicate one of the following levels of maintenance:

<i>Code</i>	<i>Application/Explanation</i>
C	Crew or operator maintenance performed within organizational maintenance.
O	Support item is removed, replaced, used at the organizational level.
I	Support item is removed, replaced, used by the direct support element of integrated direct support maintenance.
F	Support item is removed, replaced, used at the direct support level.
H	Support item is removed, replaced, used at the general support level.
D	Support items that are removed, replaced, used at depot, mobile depot, specialized repair activity only.

NOTE

Codes "I" and "F" will be considered the same by direct support units.

(b) The maintenance code entered in the fourth position indicates whether the item is to be repaired and identifies the lowest maintenance level with the capability to perform complete repair (i.e., all authorized maintenance functions). This position will contain one of the following maintenance codes:

<i>Code</i>	<i>Application/Explanation</i>
O	The lowest maintenance level capable of complete repair of the support item is the organizational level.
F	The lowest maintenance level capable of complete repair of the support item is the direct support level.
H	The lowest maintenance level capable of complete repair of the support item is the general Support level.

<i>Code</i>	<i>Application/Explanation</i>
D	The lowest maintenance level capable of complete repair of the support item is the depot level.
L	Repair restricted to designated specialized repair activity.
Z	Nonreparable No repair is authorized.
B	No repair is authorized. The item may be reconditioned by adjusting, lubricating, etc., at the user level. No parts or special tools are procured for the maintenance of this item.

(3) **Recoverability Code.** Recoverability codes are assigned to support items to indicate the disposition action on unserviceable items. The recoverability code is entered in the fifth position of the Uniform SMR Code format as follows:

<i>Recoverability Code</i>	<i>Definition</i>
Z	Nonreparable item. When unserviceable, condemn and dispose at the level indicated in position 3.
O	Reparable item. When uneconomically repairable, condemn and dispose at organizational level.
F	Reparable item. When uneconomically repairable, condemn and dispose at the direct support level.
H	Reparable item. When uneconomically repairable, condemn and dispose at the general support level.
D	Reparable item. When beyond lower level repair capability, return to depot. Condemnation and disposal not authorized below depot level.
L	Reparable item, Repair condemnation, and disposal not authorized below depot/specialized repair activity level.
A	Item requires special handling or condemnation procedures because of specific reasons (i.e., precious metal content, high dollar value, critical material or hazardous material). Refer to appropriate manuals/directives for specific instructions.

b. **Federal Stock Number.** Indicates the Federal stock number assigned to the item and will be used for requisitioning purposes.

c. **Description.** Indicates the Federal item name and a minimum description required to identify the item. The last line indicates the reference number followed by the applicable Federal Supply Code for Manufacturers (FSCM) in parentheses. The FSCM is used as an element in item identification to designate manufacturer or distributor or Government agency, etc., and is identified in SB708-42. Items that are included in kits and sets are listed, below the name of the kit or set with quantity of each item in the kit or set indicated in front of the item name.

d. **Unit of Measure (U/M).** Indicates the standard or basic quantity by which the listed item is used in performing the actual maintenance function. This measure is expressed by a two-character alphabetical abbreviation, e.g., ea, in, pr, etc., and (is the basis used to indicate quantities and allowances in subsequent columns.

e. Quantity Incorporated in Unit. Indicates the quantity of the item used in the breakout shown on the illustration figure, which is prepared for a functional group, subfunctional group, or an assembly. A “V” appearing in this column in lieu of a quantity indicates that no specific quantity is applicable (e.g., shims, spacers, etc.).

f. Thirty-Day DS/GS Maintenance Allowances.

(1) Items authorized for use as required but not for initial stockage are Identified with an asterisk in the allowance column.

(2) The allowance columns are divided into three subcolumns. The quantitative allowance of special tools for DS/GS levels of maintenance will represent initial stockage for a 30-day period for the number of equipments supported.

g. One-Year Allowance Per 100 Equipments/Contingency Planning Purposes.

(1) Items authorized for use as required but not for initial stocks.ge are identified with an asterisk in the allowance column.

(2) This column indicates the total quantity of special tools required for distribution and contingency planning purposes.

h. Depot Maintenance Allowance per 100 Equipments.

(1) Items authorized for use as required but not for initial stockage are identified with an asterisk in the allowance column.

(2) This column indicates the total quantity of special tools authorized for depot maintenance of 100 equipments.

i. Illustration. This column is divided as follows:

(1) *Figure Number.* Indicates the figure number of the illustration on which the item is shown.

(2) *Item Number.* Indicates the callout number used to reference the item in the illustration.

4. Special Information

Not applicable.

5. How to Locate Repair Parts

a. When Federal stock number or reference number is unknown:

(1) *First.* Using the table of contents, determine the functional group within which the repair part belongs. This is necessary since illustrations are prepared for functional groups, and listings are divided into the same groups.

(2) *Second.* Find the illustration covering the functional group to which the repair part belongs.

(3) *Third.* Identify the repair part on the illustration and note the illustration figure number and item number of the repair part.

(4) *Fourth.* Using the Repair Parts Listing, find the figure and item number noted on the illustration.

b. When the Federal stock number or reference number is known:

(1) *First.* Using the Index of Federal Stock Number and Reference Numbers, find the pertinent Federal stock number or reference number. This index is in ascending FSN sequence followed by a list of reference number in ascending alpha-numeric sequence, cross-referenced to the illustration figure number and item number.

(2) *Second.* After finding the figure and item number, locate the figure and item number in the repair parts list.

6. Abbreviations

alt-----	alternate
assy-----	assembly
brkt-----	bracket
CBR-----	chemical, biological, radio- logical
cond -----	condenser
dia-----	diameter
ea -----	each
encl -----	enclosure
evap -----	evaporation
ft -----	foot
Hi-Lo -----	high-low
id -----	inside diameter
in.-----	inch
lg -----	long
mtg -----	mounting
mtr -----	motor
No.-----	number
nom-----	nominal
od -----	outside diameter
reqd -----	required
RFI -----	radio frequency interference
rl-----	roll
thd -----	thread
thk -----	thick

7. Recommendations for Maintenance Publications Improvements

You can improve this manual by calling attention to errors and by recommending improvements, using DA Form 2028 (Recommended Changes to Publications or by a letter, and mailing directly to Commander, U. S. Army Troop Support Command, ATTN: AMSTS-MPP, 4300 Goodfellow Boulevard, St. Louis, Missouri 63120. A reply will be furnished directly to you.

SMR CODE	FEDERAL STOCK NUMBER	DESCRIPTION REF NUMBER & MFR CODE	USABLE ON CODE	UNIT OF MEAS	QTY INC IN UNIT	(6) 30-DAY DS MAINT ALLOWANCE			(7) 30-DAY GS MAINT ALLOWANCE			(8) 1-YR ALW PER 100 EQUIP CNTGY	(9) DEPOT ALW PER 100 EQUIP	(10) ILLUS- TRATION (a) FIG. EQUIP NO.	(b) ITEM NO.
						(a)	(b)	(c)	(a)	(b)	(c)				
SECTION II - REPAIR PARTS LIST															
GROUP 01 - CASING, GUARDS, GRILLES, DRAIN TUBES, PANELS AND FILTER															
PAOZZ	5305-984-6195	SCREW, MACHINE: GRILLE MTG, NO. 8-32 THD SIZE, 3/4 IN. LG MS35206-247 (96906)	EA	4	*	*	*	*	*	*	*	*	*	1	1
PAOZZ	5310-045-3299	WASHER, LOCK, GRILLE MTG, NO. 8 NOMINAL MS35338-42 (96906)	EA	4	*	*	*	*	*	*	*	*	*	1	2
PAOZZ	5310-821-2366	WASHER, FLAT: GRILLE MTG 13214E3469 (97403)	EA	4	*	*	*	*	*	*	*	*	*	1	3
XBOOO		GRILLE: DISCHARGE 13214E3704-1 (97403)	EA	1										1	4
MBOZZ		GASKET: DISCHARGE GRILLE MANUFACTURE FROM: RUBBER STRIP, AS REQUIRED ASTMD1056SBE42CF2 (81346)	EA	V										1	5
PAOZZ	5305-984-6195	SCREW, MACHINE: GRILLE MTG, NO. 8-32 THD SIZE, 3/4 IN. LG MS35206-247 (96906)	EA	4	*	*	*	*	*	*	*	*	*	1	6
PAOZZ	5310-045-3299	WASHER, LOCK: GRILLE MTG, NO. 8 NOMINAL MS35338-42 (96906)	EA	4	*	*	*	*	*	*	*	*	*	1	7
PAOZZ	5310-821-2366	WASHER, FLAT: GRILLE MTG 13214E3469 (97403)	EA	4	*	*	*	*	*	*	*	*	*	1	8
XBOOO		GRILLE: INTAKE 13214E706-1 (97403)	EA	1										1	9
MBOZZ		GASKET: INTAKE GRILLE MANUFACTURE FROM: RUBBER STRIP, AS REQUIRED ASTMD1056SBE42CF2 (81346)	EA	V										1	10
PAOZZ		RIVET, SOLID: PLATE MTG, 1/8 IN. DIA 11/32 IN. LG MS20426AD4-5-5 (96906)	EA	2	*	*	*	*	*	*	*	*	*	1	11
XBOZZ		PLATE, INFORMATION: DAMPER OPERATION 13217E2344 (97403)	EA	1										1	12
PAOZZ	5320-882-8388	RIVET, BLIND: HANDLE MTG AD43H (07707)	EA	28	*	*	*	*	*	*	*	*	*	1	13
XBOOO		HANDLE H561L5-2RG (98003)	EA	2										1	14
PAOZZ	4130-901-0323	FILTER, AIR 909018 (82866)	EA	1	*	*	*	*	*	*	*	*	*	1	15
PAOZZ	5310-081-8087	NUT, SELF-LOCKING: COVER MTG, NO. 6-32 THD SIZE MS21044N06 (96906)	EA	4	*	*	*	*	*	*	*	*	*	1	16
PAOZZ	5305-984-4992	SCREW, MACHINE: COVER MTG, NO. 6-32 THD SIZE, 3/4 IN. LG MS35206-232 (96906)	EA	4	*	*	*	*	*	*	*	*	*	1	17
XBOZZ		COVER: ALTERNATOR ELECTRICAL RECEPTACLE MTG 13214E3471-2 (97403)	EA	1										1	18
PAOZZ	5310-088-0551	NUT, SELF-LOCKING: COVER MTG, NO. 4-40 THD SIZE MS21044N04 (96906)	EA	4	*	*	*	*	*	*	*	*	*	1	19

SMR CODE	FEDERAL STOCK NUMBER	DESCRIPTION REF NUMBER & MFR CODE	USABLE ON CODE	UNIT OF MEAS	QTY INC IN UNIT	(6) 30-DAY DS MAINT ALLOWANCE			(7) 30-DAY GS MAINT ALLOWANCE			(8) 1-YR ALW PER EQUIP	(9) DEPOT MAINT ALW PER EQUIP	(10) ILLUS-TRATION FIG. NO.	(b) ITEM NO.
						(a) 1-20	(b) 21-50	(c) 51-100	(a) 1-20	(b) 21-50	(c) 51-100	CNTGY	EQUIP	NO.	
PAOZZ	5305-889-2999	SCREW, MACHINE: COVER MTG, NO. 4-40 THD SIZE, 1/2 IN. LG MS35206-217 (96906)	EA	4	*	*	*	*	*	*	*	*	*	1	20
XBOZZ		COVER: ALTERNATOR ELECTRICAL RECEPTACLE MTG 13214E3471-1 (97403)	EA	1										1	21
XBOZZ		PENDANT 13211E8305 (97403)	EA	1										1	22
XBOZZ		SPRING MS24586C48 (96906)	EA	1										1	23
PAOZZ	5320-932-1972	RIVET, BLIND: CHAIN ASSEMBLY MTG AD42H (07707)	EA	1	*	*	*	*	*	*	*	*	*	1	24
XBOZZ		CHAIN ASSEMBLY 13211E8322 (97403)	EA	1										1	25
XBOOO		PANEL, LOWER 13218E9949-2 (97403)	EA	1										1	26
PAOZZ	5310-880-9344	WASHER, RETAINING: LOWER PANEL MOUNTING 12-11014-12 (94222)	EA	2	*	*	*	*	*	*	*	*	*	1	27
PAOZZ		SCREW, PANEL FASTENER: LOWER PANEL MTG 12-11-713-11 (94222)	EA	2	*	*	*	*	*	*	*	*	*	1	28
MBOZZ		GASKET: LOWER PANEL MANUFACTURE FROM: RUBBER STRIP, AS REQUIRED ASTMD1056SBE42CF2 (81346)	EA	V										1	29
PAOZZ	5320-932-1972	RIVER, BLIND: INFORMATION PLATE MTG AD42H (07707)	EA	6	*	*	*	*	*	*	*	*	*	1	30
XBOOO		PLATE, INFORMATION: SCHEMATIC, REFRIGERATION 13218E7079-2 (97403)	EA	1										1	31
PAOZZ	5320-874-4471	RIVET, BLIND: INFORMATION PLATE MTG AD45H (07707)	EA	6	*	*	*	*	*	*	*	*	*	1	32
MBOZZ		SPACER: INFORMATION PLATE MTG MANUFACTURE FROM: ALUMINUM TUBE, AS REQUIRED AA6061T5 (80204)	EA	V										1	33
XBOOO		PLATE, INFORMATION: WIRING DIAGRAM 13218E9884 (97403)	EA	1										1	34
MBOZZ		INSULATION: LOWER PANEL, 1/4 IN. THICK MANUFACTURE FROM: PLASTIC SHEET, AS REQUIRED MILI14511 (81349)	EA	V										1	35
MBOZZ		INSULATION: LOWER PANEL, 1/2 IN. THICK MANUFACTURE FROM: PLASTIC SHEET, AS REQUIRED MILI14511 (81349)	EA	V										1	36
PAOZZ	5315-234-1856	PIN, COTTER MS24665-155 (96906)	EA	2	*	*	*	*	*	*	*	*	*	1	37
XBOZZ		SPRING 13211E8412 (97403)	EA	2										1	38
XBOZZ		BALL 13211E8411 (97403)	EA	2										1	39

(1)	(2)	(3)	(4)	(5)	(6)			(7)			(8)	(9)	(10)		
SMR CODE	FEDERAL STOCK NUMBER	DESCRIPTION REF NUMBER & MFR CODE	USABLE ON CODE	UNIT OF MEAS	QTY INC IN UNIT	30-DAY DS MAINT ALLOWANCE			30-DAY GS MAINT ALLOWANCE			1-YR ALW PER 100 EQUIP CNTGY	DEPOT MAINT ALW PER 100 EQUIP	ILLUS- TRATION (a) (b)	FIG. ITEM NO. NO.
						(a)	(b)	(c)	(a)	(b)	(c)				
PAOZZ	4730-908-3194	CLAMP, HOSE MS35842-11 (96906)		EA	4	*	*	*	*	*	*	*	*	1	40
PAOZZ	5310-060-2039	NUT, SELF-LOCKING: DRAIN TUBE MTG, NO. 8-32 THD SIZE MS21044D08 (96906)		EA	1	*	*	*	*	*	*	*	*	1	41
PAOZZ	5340-106-0551	CLAMP, LOOP: DRAIN TUBE MTG, 5/8 IN. NOMINAL SIZE MS21104D10 (96906)		EA	1	*	*	*	*	*	*	*	*	1	42
PAOZZ	5305-984-6194	SCREW, MACHINE: DRAIN TUBE MTG, NO. 8-32 THD SIZE, 5/8 IN. LG MS35206-246 (96906)		EA	1	*	*	*	*	*	*	*	*	1	43
XBOZZ		TUBE, DRAIN: LEFT SIDE R661-72C108 (97450)		EA	1									1	44
PAOZZ	5310-060-2039	NUT, SELF-LOCKING: DRAIN TUBE MTG, NO. 8-32 THD SIZE MS21044D08 (96906)		EA	1	*	*	*	*	*	*	*	*	1	45
PAOZZ	5340-106-0551	CLAMP, LOOP: DRAIN TUBE MTG, 5/8 IN. NOMINAL SIZE MS21104D10 (96906)		EA	1	*	*	*	*	*	*	*	*	1	46
PAOZZ	5305-063-3503	SCREW, MACHINE: DRAIN TUBE MTG, NO. 8-32 THD SIZE, 1/2 IN. LG MS24693S50 (96906)		EA	1	*	*	*	*	*	*	*	*	1	47
XBOZZ		TUBE, DRAIN: RIGHT SIDE 13214E3484 (97403)		EA	1									1	48
XBOZZ		HOSE, DRAIN 13211E8323 (97403)		EA	2									1	49
XBOZZ		COVER: CIRCUIT BREAKER ACCESS 13218E7076 (97403)		EA	1									1	50
PAOZZ	5310-530-9963	WASHER, RETAINING 5S3-1 (71286)		EA	2	*	*	*	*	*	*	*	*	1	51
PAOZZ	5325-954-3832	STUD, TURNLOCK FASTENER: COVER MOUNTING 12S1-14-1AA (71286)		EA	2	*	*	*	*	*	*	*	*	1	52
MBOZZ		GASKET: COVER MANUFACTURE FROM: RUBBER SHEET, AS REQUIRED ASTMD1056SBE42CF2 (81346)		EA	V									1	53
PAOZZ	5320-932-1972	RIVET, BLIND: INFORMATION PLATE MOUNTING AD42H (07707)		EA	2	*	*	*	*	*	*	*	*	1	54
XBOZZ		PLATE, INFORMATION: CIRCUIT BREAKER 13218E7077 (97403)		EA	1									1	55
PAOZZ	5310-088-0551	NUT, SELF-LOCKING: COVER MTG, NO. 4-40 THD SIZE MS21044N04 (96906)		EA	8	*	*	*	*	*	*	*	*	1	56
PAOZZ	5305-889-2999	SCREW, MACHINE: COVER MTG, NO. 4-40 THD SIZE, 1/2 IN. LG MS35206-217 (96906)		EA	8	*	*	*	*	*	*	*	*	1	57
XBOZZ		COVER, ALTERNATOR ELECTRICAL RECEPTACLE MTG 13214E3471-1 (97403)		EA	2									1	58
PAOZZ	5320-932-1972	RIVET, BLIND: IDENTIFICATION PLATE MTG AD42H (07707)		EA	4	*	*	*	*	*	*	*	*	1	59
XBOOO		PLATE, IDENTIFICATION R661-72C112 (97450)		EA	1									1	60
PAOZZ	5305-984-6194	SCREW, MACHINE: TOP PANEL MTG, NO. 8-32 THD SIZE, 5/8 IN. LG MS35206-246 (96906)		EA	20	*	*	*	*	*	*	*	*	1	61

(1) SMR CODE	(2) FEDERAL STOCK NUMBER	(3) DESCRIPTION REF NUMBER & MFR CODE	(4) USABLE ON CODE	(5) UNIT OF MEAS	(6) QTY INC IN UNIT	(6) 30-DAY DS MAINT ALLOWANCE			(7) 30-DAY GS MAINT ALLOWANCE			(8) 1-YR ALW PER EQUIP CNTGY	(9) DEPOT MAINT ALW PER EQUIP	(10) ILLUS- TRATION	
						(a)	(b)	(c)	(a)	(b)	(c)	100	100	(a)	(b)
PAOZZ		WASHER ASSEMBLY, TOP PANEL MTG R655-71C110 (97450)		EA	20	*	*	*	*	*	*	*	*	1	62
XBOOO		PANEL, TOP 13214E3384 (97403)		EA	1									1	63
MBOOZ		INSULATION: TOP PANEL, 1/4 IN. THICK MANUFACTURE FROM: PLASTIC SHEET, AS REQUIRED MILL14511 (81349)		EA	V									1	64
MBOZZ		GASKET: TOP PANEL MANUFACTURE FROM: RUBBER SHEET, AS REQUIRED ASTMD1056SBE42CF2 (81346)		EA	V									1	65
PAOZZ	5305-984-6195	SCREW, MAHCINE: SCREEN MTG, NO. 8-32 THD SIZE, 3/4 IN. LG MS35206-247 (96906)		EA	5	*	*	*	*	*	*	*	*	1	66
PAOZZ	5310-821-2366	WASHER, FLAT: SCREEN MTG 13214E3469 (97403)		EA	5	*	*	*	*	*	*	*	*	1	67
PAOZZ	5310-045-3299	WASHER, LOCK: SCREEN MTG MS35338-42 (96906)		EA	5	*	*	*	*	*	*	*	*	1	68
XBOZZ		SCREEN, FRESH AIR 13214E3616 (97403)		EA	1									1	69
PAOZZ	5305-984-6197	SCREW, MACHINE: DUCT COVER MTG, NO. 8-32 THD SIZE, 1 IN. LG MS35206-249 (96906)		EA	5	*	*	*	*	*	*	*	*	1	70
PAOZZ	5310-821-2366	WASHER, FLAT: DUCT COVER MTG 13214E3469 (97403)		EA	5	*	*	*	*	*	*	*	*	1	71
PAOZZ	5310-045-3299	WASHER, LOCK: DUCT COVER MTG MS35338-42 (96906)		EA	5	*	*	*	*	*	*	*	*	1	72
XBOZZ		COVER: CBR DUCT 13214E3615 (97403)		EA	1									1	73
MBOZZ		GASKET: COVER MANUFACTURE FROM: RUBBER SHEET, AS REQUIRED ASTMD1056SBE42CF2 (81346)		EA	V									1	74
PAOZZ	5320-932-1972	RIVET, BLIND: INFORMATION PLATE MTG AD42H (07707)		EA	2	*	*	*	*	*	*	*	*	1	75
XBOZZ		PLATE, INFORMATION: CIRCUIT BREAKER RESET 13217E6814 (97403)		EA	1									1	76
PAOZZ	5305-984-6194	SCREW, MACHINE: ACCESS COVER MTG, NO. 8-32 THD SIZE, 5/8 IN. LG MS35206-246 (96906)		EA	2	*	*	*	*	*	*	*	*	1	77
XBOZZ		COVER, ACCESS 13218E7489 (97403)		EA	1									1	78
PAOZZ	5320-932-1972	RIVET, BLIND: INFORMATION PLATE MTG AD42H (07707)		EA	4	*	*	*	*	*	*	*	*	1	79
XBOZZ		PLATE, INSTRUCTION: REFRIGERANT CHARGE 13214E3662 (97403)		EA	1									1	80
MBOZZ		GASKET: ACCESS COVER MANUFACTURE FROM: RUBBER SHEET, AS REQUIRED ASTMD1056SBE42CF2 (81346)		EA	V									1	81

SMR CODE	FEDERAL STOCK NUMBER	DESCRIPTION REF NUMBER & MFR CODE	USABLE ON CODE	UNIT OF MEAS	(5) QTY INC IN UNIT	(6) 30-DAY DS MAINT ALLOWANCE			(7) 30-DAY GS MAINT ALLOWANCE			(8) 1-YR ALW PER 100 EQUIP CNTGY	(9) DEPOT MAINT ALW PER 100 EQUIP	(10) ILLUS- TRATION (a) (b)	
						(a)	(b)	(c)	(a)	(b)	(c)	FIG. NO.	ITEM NO.		
PAOZZ	5320-932-1972	RIVET, BLIND: INFORMATION PLATE MTG AD42H (07707)		EA	2	*	*	*	*	*	*	*	*	1	82
XBOOO		PLATE, INFORMATION: SUCTION SERVICE 13218E7074 (97403)		EA	1									1	83
PAOZZ	5320-932-1972	RIVET, BLIND: INFORMATION PLATE MTG AD42H (07707)		EA	2	*	*	*	*	*	*	*	*	1	84
XBOOO		PLATE, INFORMATION: DISCHARGE SERVICE 13218E7075 (97403)		EA	1									1	85
PAOZZ	5320-932-1972	RIVET, BLIND: INSTRUCTION PLATE MTG AD42H (07707)		EA	2	*	*	*	*	*	*	*	*	1	86
XBOOO		PLATE, INFORMATION: FAN ROTATION 13218E7078 (97403)		EA	1									1	87
PAOZZ	5320-932-1972	RIVET, BLIND: INSTRUCTION PLATE MTG AD42H (07707)		EA	2	*	*	*	*	*	*	*	*	1	88
XBOOO		PLATE, MOISTURE INDICATION 13211E8215 (97403)		EA	1									1	89
PAOZZ	5305-993-1849	SCREW, MACHINE: CONDENSER COIL GUARD MTG, NO. 10-32 THD SIZE, 3/4 IN. LG MS35207-265 (96906)		EA	6	*	*	*	*	*	*	*	*	1	90
PAOZZ	5310-821-2366	WASHER, FLAT: CONDENSER COIL GUARD MTG 13214E3469 (97403)		EA	6	*	*	*	*	*	*	*	*	1	91
XBOOO		GUARD, CONDENSER COIL 13214E3533 (97403)		EA	1									1	92
PAOZZ	5305-984-6195	SCREW, MACHINE: FAN GUARD MTG, NO. 8-32 THD SIZE, 3/4 IN. LG MS35206-247 (96906)		EA	8	*	*	*	*	*	*	*	*	1	93
PAOZZ	5310-821-2366	WASHER, FLAT: FAN GUARD MTG 13214E3469 (97403)		EA	8	*	*	*	*	*	*	*	*	1	94
PAOZZ	5310-045-3299	WASHER, LOCK: FAN GUARD MTG MS35338-42 (96906)		EA	8	*	*	*	*	*	*	*	*	1	95
XBOOO		GUARD, FAN 13214E3612 (97403)		EA	1									1	96
XBOOO		BRACKET, SUPPORT 13214E3622 (97403)		EA	1									1	97
PAOZZ	5305-068-0505	SCREW, MACHINE: CASING ATTACHMENT, 1/4-28 THD SIZE, 5/8 IN. LG MS90726-5 (96906)		EA	8	*	*	*	*	*	*	*	*	1	98
PAOZZ	5310-809-4058	WASHER, FLAT: CASING ATTACHMENT MS27183-10 (96906)		EA	8	*	*	*	*	*	*	*	*	1	99
XBFFF		CASING 13214E3635 (97403)		EA	1									1	100
XBFFF		PANEL, BOTTOM 13214E3386 (97403)		EA	1									1	101
MBOZZ		GASKET: BOTTOM PANEL MANUFACTURE FROM: RUBBER STRIP, AS REQUIRED ASTMD1056SBE42CF2 (81346)		EA	V									1	102
PAOZZ	4730-079-9399	PLUG, PIPE: DRAIN CONNECTION 13211F8178 (97403)		EA	4	*	*	*	*	*	*	*	*	1	103

(1) SMR CODE	(2) FEDERAL STOCK NUMBER	(3) DESCRIPTION REF NUMBER & MFR CODE	(4) USABLE ON CODE	(5) UNIT OF MEAS	(6) QTY INC IN UNIT	(6) 30-DAY DS MAINT ALLOWANCE			(7) 30-DAY GS MAINT ALLOWANCE			(8) 1-YR ALW PER 100 EQUIP CNTGY	(9) DEPOT MAINT ALW PER 100 EQUIP	(10) ILLUS- TRATION FIG. ITEM NO. NO.		
						(a)	(b)	(c)	(a)	(b)	(c)	(a)	(b)			
GROUP 02 JUNCTION BOX ASSEMBLY																
XBOOO		JUNCTION BOX ASSEMBLY 13218E9887-2 (97403)		EA	1										2	
XBOOO		COVER: JUNCTION BOX 13214E3412 (97403)		EA	1										2	1
PAOZZ	5310-880-9344	WASHER, RETAINING: COVER MTG 12-11014-12 (94222)		EA	4	*	*	*	*	*	*	*	*	*	2	2
PAOZZ	5305-356-6102	SCREW, PANEL FASTENER: COVER MOUNTING 12-11-303-11 (94222)		EA	4	*	*	*	*	*	*	*	*	*	2	3
MBOZZ		GASKET: JUNCTION BOX COVER MANUFACTURE FROM: RUBBER STRIP: AS REQUIRED ASTMD1056SBE42CF2 (81346)		EA	V										2	4
PAOZZ	5310-275-6813	NUT, SHEET SPRING: JUNCTION BOX COVER MTG C13853-1420 (78553)		EA	4	*	*	*	*	*	*	*	*	*	2	5
PBOZZ	5355-171-2442	KNOB: CIRCUIT BREAKER RESET B43310-1 (41625)		EA	1	*	*	*	*	*	*	*	*	*	2	6
PAOZZ	5310-596-7691	WASHER, LOCK: CIRCUIT BREAKER RESET MS35335-32 (96906)		EA	1	*	*	*	*	*	*	*	*	*	2	7
XBOZZ		END FITTING, CORE: CIRCUIT BREAKER RESET A37693 (41625)		EA	1										2	8
XBOZZ		CONTROL ASSEMBLY, PUSH-PULL B48701X22-00 (41625)		EA	1										2	9
PAOZZ	5305-984-4983	SCREW, MACHINE: CIRCUIT BREAKER MTG, NO. 6-32 THD SIZE, 1/4 IN. LG MS35206-226 (96906)		EA	4	*	*	*	*	*	*	*	*	*	2	10
PAOZZ	5310-790-0079	WASHER, LOCK: CIRCUIT BREAKER MTG MS35333-37 (96906)		EA	6	*	*	*	*	*	*	*	*	*	2	11
PAOZZ	5305-984-4988	SCREW, MACHINE: COVER MTG, NO. 8-32 THD SIZE, 3/8 IN. LG MS35206-228 (96906)		EA	2	*	*	*	*	*	*	*	*	*	2	12
XBOZZ		COVER: CIRCUIT BREAKER OPENING 13215E9828 (97403)		EA	1										2	13
XBOZZ		COVER: CIRCUIT BREAKER 006-10245 (74193)		EA	1										2	14
PAOZZ		CIRCUIT BREAKER APGH11R1799-5 (81541)		EA	1	*	1	1	*	1	1	14	12		2	15
PAOZZ		NUT, SELF-LOCKING: NO. 10-32 THD SIZE MS21083N3 (96906)		EA	2	*	*	*	*	*	*	*	*	*	2	16
XBOZZ		PLATE, ACTUATOR: CIRCUIT BREAKER RESET R655-71C143 (97450)		EA	1										2	17
XBOZZ		ARM ACTUATOR: CIRCUIT BREAKER RESET R655-71C142-2 (97450)		EA	1										2	18
PAOZZ	5305-984-6196	SCREW, MACHINE: CLAMP MTG, NO. 8-32 THD SIZE, 7/8 IN. LG MS35206-248 (96906)		EA	2	*	*	*	*	*	*	*	*	*	2	19

SMR CODE	FEDERAL STOCK NUMBER	DESCRIPTION REF NUMBER & MFR CODE	USABLE ON CODE	UNIT OF MEAS	(5) QTY INC IN UNIT	(6) 30-DAY DS MAINT ALLOWANCE			(7) 30-DAY GS MAINT ALLOWANCE			(8) 1-YR ALW	(9) DEPOT MAINT ALW	(10) ILLUS- TRATION FIG. NO.	(b) ITEM NO.
						(a)	(b)	(c)	(a)	(b)	(c)	PER 100 EQUIP CNTGY	PER 100 EQUIP	(a)	
PAOZZ	5340-247-6226	CLAMP, LOOP: CIRCUIT BREAKER RESET MS21104D3 (96906)	EA	2	*	*	*	*	*	*	*	*	*	2	20
XBOZZ		SPACER: CLAMP MTG 13211E8376-5 (97403)	EA	2										2	21
PAOZZ	5310-877-5797	NUT, SELF-LOCKING: GROUND LUG MTG, NO. 10-32 THD SIZE MS21044N3 (96906)	EA	1	*	*	*	*	*	*	*	*	*	2	22
PAOZZ	5305-995-3444	SCREW, MACHINE: GROUND LUG MTG, NO. 10-32 THD SIZE, 7/8 IN. LG MS35207-266 (96906)	EA	1	*	*	*	*	*	*	*	*	*	2	23
PAOZZ	5310-014-5850	WASHER, FLAT: GROUND LUG MTG MS27183-42 (96906)	EA	2	*	*	*	*	*	*	*	*	*	2	24
PAOZZ	5310-045-3296	WASHER, LOCK: GROUND LUG MTG MS35338-43 (96906)	EA	1	*	*	*	*	*	*	*	*	*	2	25
MFOFF		LEAD, ELECTRICAL MANUFACTURE FROM:	EA	1										2	26
		WIRE, ELECTRICAL, AS REQUIRED M5086-2-10-9 (81349)	EA												
		TERMINAL LUG, 1 EA MS25036-112 (96906)	EA												
		TERMINAL LUG, 1 EA MS25036-157 (96906)	EA												
PAOZZ	5310-880-9344	WASHER, RETAINING: JUNCTION BOX MOUNTING 12-11014-12 (94222)	EA	4	*	*	*	*	*	*	*	*	*	2	27
PAOZZ	5305-621-5305	SCREW, PANEL FASTENER: JUNCTION BOX MTG 12-11-203-11 (94222)	EA	4	*	*	*	*	*	*	*	*	*	2	28
PAOZZ	5950-111-4720	TRANSFORMER, STEPDOWN: 115 VOLTS TO 30 VOLTS 41100 (73386)	EA	1	*	1	1	*	1	1	14	12	2	29	
MBOZZ		CAPACITOR ASSEMBLY: RFI R655-71C118 (97450) MANUFACTURE FROM:	EA	1										2	30
		CAPACITOR, 1 EA R655-71C117 (97450)	EA												
		TERMINAL LUG, 2EA MS25036-101 (96906)	EA												
		INSULATION SLEEVING, AS REQUIRED MILI23053-2C11 (81349)	EA												
MFOFF		LEAD, ELECTRICAL MANUFACTURE FROM:	EA	2										2	31
		WIRE, ELECTRICAL, AS REQUIRED M5086-1-16-9 (81349)	EA												
		TERMINAL LUG, 1 EA MS25036-106 (96906)	EA												
		TERMINAL LUG, 1 EA 13216E6191-2 (97403)	EA												
XBOZZ		GASKET: TRANSFORMER MTG 13214E3685-2 (97403)	EA	1										2	32
MBOZZ		GASKET: CONTROL BOX MTG MANUFACTURE FROM:	EA	1										2	33
		RUBBER SHEET, AS REQUIRED ASTMD1056SBE42CF2 (81346)	EA												

SMR CODE	FEDERAL STOCK NUMBER	DESCRIPTION REF NUMBER & MFR CODE	USABLE ON CODE	UNIT OF MEAS	QTY INC IN UNIT	(6) 30-DAY DS MAINT ALLOWANCE			(7) 30-DAY GS MAINT ALLOWANCE			(8) 1-YR ALW	(9) DEPOT MAINT ALW	(10) ILLUS- TRATION FIG. NO.	(b) ITEM NO.
						(a)	(b)	(c)	(a)	(b)	(c)	PER 100 EQUIP CNTGY	PER 100 EQUIP	(a)	(b)
PAOZZ	5305-984-6193	SCREW, MACHINE: BRACKET MTG, NO. 8-32 THD SIZE, 1/2 IN. LG MS35206-245 (96906)		EA	3	*	*	*	*	*	*	*	*	2	34
XBOZZ		BRACKET: TIME DELAY MTG 13218E9897 (97403)		EA	1									2	35
MFOFF		LEAD, ELECTRICAL MANUFACTURE FROM:		EA	2									2	36
		WIRE, ELECTRICAL, AS REQUIRED M5086-1-16-9 (81349)		EA											
MFOFF		LEAD, ELECTRICAL MANUFACTURE FROM:		EA	5									2	37
		WIRE, ELECTRICAL, AS REQUIRED M5086-1-16-9 (81349)		EA											
		TERMINAL LUG, 1 EA MS25036-153 (96906)		EA											
BOZZ		INSULATION SLEEVING: MANUFACTURE FROM:		EA	V									2	38
		TUBING, AS REQUIRED MILI23053-2CL1 (81349)		EA											
PAOZZ	5310-081-8087	NUT, SELF-LICKING: TIME DELAY RELAY MTG, NO. 6-32 THD SIZE MS21044N06 (96906)		EA	4	*	*	*	*	*	*	*	*	2	39
PAOZZ	5305-984-4989	SCREW, MACHINE: TIME DELAY RELAY MTG, NO. 6-32 THD SIZE 7/16 IN. LG MS35206-229 (96906)		EA	4	*	*	*	*	*	*	*	*	2	40
PAOZZ	5945-007-7669	RELAY, TIME DELAY: COMPRESSOR START, 30 SECOND DELAY 13216E6182-3 (97403)		EA	1	*	*	1	*	*	1	14	12	2	41
PAOZZ	5945-007-7668	RELAY, TIME DELAY: FAN SPEED, 15 SECOND DELAY 13216E6182-2 (97403)		EA	1	*	*	1	*	*	1	14	12	2	42
MFOFF		LEAD, ELECTRICAL MANUFACTURE FROM:		EA	1									2	43
		WIRE, ELECTRICAL, AS REQUIRED M5086-1-16-9 (81349)		EA											
		TERMINAL, QUICK DISCONNECT, 1 EA 13216E6192 (97403)		EA											
		TERMINAL LUG, 1 EA MS25036-153 (96906)		EA											
MFOFF		LEAD, ELECTRICAL MANUFACTURE FROM:		EA	2									2	44
		WIRE, ELECTRICAL, AS REQUIRED M5086-1-16-9 (81349)		EA											
		TERMINAL LUG, 1 EA MS25036-153 (96906)		EA											
		TERMINAL LUG, 1 EA MS25036-106 (96906)		EA											
MFOFF		LEAD, ELECTRICAL MANUFACTURE FROM:		EA	2									2	45
		WIRE, ELECTRICAL, AS REQUIRED M5086-1-16-9 (81349)		EA											
		TERMINAL LUG, 1 EA 13216E6191-2 (97403)		EA											
		TERMINAL LUG, 1 EA MS25036-153 (96906)		EA											

(1) SMR CODE	(2) FEDERAL STOCK NUMBER	(3) DESCRIPTION REF NUMBER & MFR CODE	(4) USABLE ON CODE	(5) UNIT OF MEAS	(6) QTY INC IN UNIT	(7) 30-DAY DS MAINT ALLOWANCE			(8) 30-DAY GS MAINT ALLOWANCE			(9) 1-YR ALW PER EQUIP CENTGY	(10) DEPOT MAINT ALW EQUIP	(11) ILLUS- TRATION FIG. ITEM NO. NO.	
						(a)	(b)	(c)	(a)	(b)	(c)	(a)	(b)		
MFOFF		LEAD, ELECTRICAL MANUFACTURE FROM:		EA	1									2	46
		WIRE, ELECTRICAL, AS REQUIRED M5086-1-16-9 (81349)		EA											
		TERMINAL LUG, 1 EA MS25036-106 (96906)		EA											
MFOFF		LEAD, ELECTRICAL MANUFACTURE FROM:		EA	1									2	47
		WIRE, ELECTRICAL, AS REQUIRED M5086-1-14-9 (81349)		EA											
		TERMINAL LUG, 1 EA 13216E6191-2 (97403)		EA											
		TERMINAL LUG, 1 EA MS25036-108 (96906)		EA											
MFOFF		LEAD, ELECTRICAL MANUFACTURE FROM:		EA	3									2	48
		WIRE, ELECTRICAL, AS REQUIRED M5086-1-16-9 (81349)		EA											
		TERMINAL LUG, 1 EA MS25036-108 (96906)		EA											
		TERMINAL LUG, 1EA MS25036-153 (96906)		EA											
MFOFF		LEAD, ELECTRICAL MANUFACTURE FROM:		EA	3									2	49
		WIRE ELECTRICAL, AS REQUIRED M5086-1-16-9 (81349)		EA											
		TERMINAL LUG, 2 EA MS25036-153 (96906)		EA											
MFOFF		LEAD, ELECTRICAL MANUFACTURE FROM:		EA	2									2	50
		WIRE, ELECTRICAL, AS REQUIRED M5086-1-12-9 (81349)		EA											
		TERMINAL LUG, 1 EA 13216E6191-3 (97403)		EA											
		TERMINAL LUG, 1 EA MS25036-156 (96906)		EA											
MFOFF		LEAD, ELECTRICAL MANUFACTURE FROM:		EA	1									2	51
		WIRE, ELECTRICAL, AS REQUIRED M5086-1-14-9 (81349)		EA											
		TERMINAL LUG, 1 EA 13216E6191-2 (97403)		EA											
		TERMINAL LUG, 1 EA MS25036-153 (96906)		EA											
MFOFF		LEAD, ELECTRICAL MANUFACTURE FROM:		EA	1									2	52
		WIRE ELECTRICAL, AS REQUIRED M5086-1-15-9 (81349)		EA											
		TERMINAL LUG, 2 EA MS25036-153 (96906)		EA											
PAOZZ	5310-081-8087	NUT, SELF-LOCKING: HARNESS MTG, NO. 6-32 THD SIZE MS21044N06 (96906)		EA	4	*	*	*	*	*	*	*	*	2	53

(1) SMR CODE	(2) FEDERAL STOCK NUMBER	(3) DESCRIPTION REF NUMBER & MFR CODE	(4) USABLE ON CODE	(5) UNIT OF MEAS	(6) QTY INC IN UNIT	(6) 30-DAY DS MAINT ALLOWANCE			(7) 30-DAY GS MAINT ALLOWANCE			(8) 1-YR ALW PER EQUIP CNTGY	(9) DEPOT MAINT ALW PER EQUIP	(10) ILLUS- TRATION (a) (b) FIG. ITEM NO. NO.		
						(a)	(b)	(c)	(a)	(b)	(c)	100	100	(a)	(b)	
PAOZZ	5305-984-4992	SCREW, MACHINE: HARNESS MTG, NO. 6-32 THD SIZE, 3/4 IN. LG MS35206-232 (96906)		EA	4	*	*	*	*	*	*	*	*	2	54	
MFOFF	4130-106-5662	WIRING HARNESS: JUNCTION BOX 13214E3724 (97403) MANUFACTURE FROM: CONNECTOR, RECEPTACLE, 1 EA MS3102R28-9S (96906) WIRE, ELECTRICAL, AS REQUIRED M5086-1-16-9 (81349) WIRE, ELECTRICAL, AS REQUIRED M5086-1-14-9 (81349) TERMINAL LUG, 7 EA MS25036-153 (96906) TERMINAL LUG, 2 EA MS25036-106 (96906) TERMINAL LUG, 1 EA MS25036-108 (96906) INSULATION SLEEVING, AS REQUIRED MIL123053-2CL1 (81349)		EA	1									2	55	
XBOZZ		GASKET, RUBBER: HARNESS MTG MS51007-10 (96906)		EA	1									2	56	
PAOZZ	5310-811-3494	NUT, SELF-LOCKING: HARNESS MTG, NO. 8-32 THD SIZE MS21044N08 (96906)		EA	4	*	*	*	*	*	*	*	*	2	57	
PAOZZ	5305-984-6195	SCREW, MACHINE: HARNESS MTG, NO. 8-32 THD SIZE, 3/4 IN. LG MS35206-247 (96906)		EA	4	*	*	*	*	*	*	*	*	2	58	
MFOFF		WIRING HARNESS: JUNCTION BOX 13218E9896 (97403) MANUFACTURE FROM: CONNECTOR, RECEPTACLE, 1 EA MS3102R32-7P (96906) WIRE, ELECTRICAL, AS REQUIRED M5086-1-16-9 (81349) WIRE, ELECTRICAL, AS REQUIRED M5086-1-12-9 (81349) INSULATION SLEEVING, AS REQUIRED MIL123053-2CL1 (81349) TERMINAL, QUICK DISCONNECT, 1 EA 13216E6192 (97403) TERMINAL LUG, 1 EA MS25036-108 (96906) TERMINAL LUG, 1 EA MS25036-112 (96906) TERMINAL LUG, 2 EA MS25036-156 (96906) TERMINAL LUG, 9 EA MS25036-153 (96906) TERMINAL LUG, 10 EA MS25036-106 (96906)		EA	1										2	59
XBOZZ		GASKET, RUBBER: HARNESS MTG MS51007-12 (96906)		EA	1									2	60	

(1)	(2)	(3)	(4)	(5)	(6)			(7)			(8)	(9)	(10)		
SMR CODE	FEDERAL STOCK NUMBER	DESCRIPTION REF NUMBER & MFR CODE	USABLE ON CODE	UNIT OF MEAS	QTY INC IN UNIT	30-DAY DS MAINT ALLOWANCE			30-DAY GS MAINT ALLOWANCE			1-YR ALW PER 100 EQUIP CNTGY	DEPOT MAINT ALW PER 100 EQUIP	ILLUS- TRATION (a)	(b)
						(a)	(b)	(c)	(a)	(b)	(c)	FIG.	ITEM NO.		
PAOZZ	5961-106-5259	RECTIFIER, SEMI-CONDUCTOR SS0329 (58849)		EA	1	*	1	1	*	1	1	14	12	2	61
PAOZZ	5310-081-8087	NUT, SELF-LOCKING: FUSEHOLDER MTG, NO. 6-32 THD SIZE MS21044N06 (96906)		EA	2	*	*	*	*	*	*	*	*	2	62
PAOZZ	5305-059-4553	SCREW, MACHINE: FUSEHOLDER MTG, NO. 6-32 THD SIZE, 1/2 IN. LG MS35190-238 (96906)		EA	2	*	*	*	*	*	*	*	*	2	63
PAOZZ	5920-243-9331	FUSE: CONTROL CIRCUIT, 2 AMPRESS F09A250V2A (81349)		EA	1	2	3	6	2	3	6	70	65	2	64
XBOZZ		FUSEHOLDER 4515 (71400)		EA	1									2	65
XBOZZ		INSULATION: FUSEHOLDER MTG 13214E3814 (97403)		EA	1									2	66
PAOZZ	5920-939-5442	FUSE: CONTROL CIRCUIT, 5 AMPERES KAW5 (71400)		EA	1	2	3	6	2	3	6	70	65	2	67
PAOZZ	5310-081-8087	NUT, SELF-LOCKING: FUSEHOLDER MTG, NO. 6-32 THD SIZE MS21044N06 (96906)		EA	2	*	*	*	*	*	*	*	*	2	68
PAOZZ	5305-059-4553	SCREW, MACHINE: FUSEHOLDER MTG, NO. 6-32 THD SIZE, 1/2 IN. LG MS35190-238 (96906)		EA	2	*	*	*	*	*	*	*	*	2	69
XBOZZ		FUSEHOLDER 2819 (71400)		EA	1									2	70
XBOZZ		INSULATION: FUSEHOLDER MTG 13214E3726 (97403)		EA	1									2	71
PAOZZ	5310-081-8087	NUT, SELF-LOCKING: TERMINAL BOARD MTG, NO. 6-32 THD SIZE MS21044N06 (96906)		EA	2	*	*	*	*	*	*	*	*	2	72
PAOZZ	5305-889-3001	SCREW, MACHINE: TERMINAL BOARD MTG, NO. 6-32 THD SIZE, 5/8 IN. LG MS35206-231 (96906)		EA	2	*	*	*	*	*	*	*	*	2	73
XBOZZ		TERMINAL BOARD 699J6F (75382)		EA	1									2	74
PAOZZ	5310-877-5797	NUT, SELF-LOCKING: TERMINAL BOARD MTG, NO. 10-32 THD SIZE MS21044N3 (96906)		EA	4	*	*	*	*	*	*	*	*	2	75
PAOZZ	5305-995-3444	SCREW, MACHINE: TERMINAL BOARD MTG, NO. 10-32 THD SIZE, 7/8 IN. LG MS35207-266 (96906)		EA	4	*	*	*	*	*	*	*	*	2	76
XBOZZ		TERMINAL BOARD 39TB8 (75382)		EA	1									2	77
PAOZZ	5310-877-5797	NUT, SELF-LOCKING: RELAY MTG, NO. 10-32 THD SIZE MS21044N3 (96906)		EA	4	*	*	*	*	*	*	*	*	2	78
PAOZZ	5305-989-7435	SCREW, MACHINE: RELAY MTG, NO. 10-32 THD SIZE MS35207-264 (96906)		EA	4	*	*	*	*	*	*	*	*	2	79
PAOZZ	5945-549-6348	RELAY: HEATER CONTROL MS24192D1 (96906)		EA	1	*	1	1	*	1	1	14	12	2	80
PAOZZ	5310-877-5797	NUT, SELF-LOCKING: RELAY MTG, NO. 10-32 THD SIZE MS21044N3 (96906)		EA	4	*	*	*	*	*	*	*	*	2	81

(1) SMR CODE	(2) FEDERAL STOCK NUMBER	(3) DESCRIPTION REF NUMBER & MFR CODE	(4) USABLE ON CODE	(5) UNIT OF MEAS	(6) QTY INC IN UNIT	(6) 30-DAY DS MAINT ALLOWANCE			(7) 30-DAY GS MAINT ALLOWANCE			(8) 1-YR ALW PER 100 EQUIP CNTGY	(9) DEPOT MAINT ALW PER 100 EQUIP	(10) ILLUS- TRATION	
						(a)	(b)	(c)	(a)	(b)	(c)	(a)	(b)	FIG. NO.	ITEM NO.
PAOZZ	5305-989-7435	SCREW, MACHINE: RELAY MTG, NO. 10-32 THD SIZE MS35207-264 (96906)		EA	4	*	*	*	*	*	*	*	*	2	82
PAOZZ	5945-549-6348	RELAY: COMPRESSOR CONTROL MS24192D1 (96906)		EA	1	*	1	1	*	1	1	14	12	2	83
XBOZZ		JUNCTION BOX 13218E9913 (97403)		EA	1									2	84
		GROUP 03 - CONTROL PANEL ASSEMBLY													
XBOOO		CONTROL PANEL ASSEMBLY 13218E9908-3 (97403)		EA	1									3	
PAOZZ	5305-993-1851	SCREW, MACHINE: CONTROL PANEL MTG, NO. 10-32 THD SIZE, 1 IN. LG MS35207-267 (96906)		EA	4	*	*	*	*	*	*	*	*	3	1
XBOZZ		INSULATION, ELECTRICAL: CONTROL PANEL 13214E3762 (97403)		EA	2									3	2
PBOZZ	5355-579-2896	KNOB, CONTROL: SWITCH MS25165-1 (96906)		EA	1	*	*	*	*	*	*	*	*	3	3
PBOOO	5355-472-9354	KNOB, CONTROL: THERMOSTAT MS91528-1C4B (96906)		EA	1	*	*	*	*	*	*	*	*	3	4
PAOZZ	5930-907-8948	SWITCH ROTARY 8912K216 (15605)		EA	1	*	1	2	*	1	2	21	16	3	5
PAOZZ	5305-989-7434	SCREW, MACHINE: CLAMP MTG, NO. 10-32 THD SIZE, 1/2 IN. LG MS35207-263 (96906)		EA	1	*	*	*	*	*	*	*	*	3	6
PAOZZ	5310-045-3296	WASHER, LOCK: CLAMP MTG MS35338-43 (96906)		EA	1	*	*	*	*	*	*	*	*	3	7
PAOZZ	5340-663-1979	CLAMP, LOOP: THERMOSTAT MTG, 3/8 IN. NOMINAL SIZE MS21919H6 (96906)		EA	1	*	*	*	*	*	*	*	*	3	8
PAOZZ	5310-889-2549	NUT, SELF-LOCKING: THERMOSTAT MTG, NO. 8-32 THD SIZE MS21045-08 (96906)		EA	4	*	*	*	*	*	*	*	*	3	9
PAOZZ	5305-984-6193	SCREW, MACHINE: THERMOSTAT MTG, NO. 8-32 THD SIZE, 1/2 IN. LG MS35206-245 (96906)		EA	4	*	*	*	*	*	*	*	*	3	10
PAOZZ	5310-899-2549	NUT, SELF-LOCKING: PANEL COVER MTG, NO. 8-32 THD SIZE MS21045-08 (96906)		EA	4	*	*	*	*	*	*	*	*	3	11
PAOZZ	5305-984-6193	SCREW, MACHINE: PANEL COVER MTG, NO. 8-32 THD SIZE, 1/2 IN. LG MS35206-245 (96906)		EA	4	*	*	*	*	*	*	*	*	3	12
XBOOO		PANEL 13218E9911 (97403)		EA	1									3	13
PAOZZ	5930-923-4176	THERMOSTAT, TEMPERATURE CONTROL A19AGF10 (92578)		EA	1	*	1	1	*	1	1	14	12	3	14
PAOZZ	5930-683-1628	TOGGLE SWITCH: HI-LO SPEED MS24523-22 (96906)		EA	1	*	1	1	*	1	1	14	12	3	15

(1)	(2)	(3)	(4)	(5)	(6)			(7)			(8)	(9)	(10)		
SMR CODE	FEDERAL STOCK NUMBER	DESCRIPTION REF NUMBER & MFR CODE	USABLE ON CODE	UNIT OF MEAS	QTY INC IN UNIT	30-DAY DS MAINT ALLOWANCE			30-DAY GS MAINT ALLOWANCE			1-YR ALW	DEPOT MAINT	ILLUS- TRATION	
						(a)	(b)	(c)	(a)	(b)	(c)	PER 100 EQUIP CNTGY	ALW 100 EQUIP	(a)	(b)
PAOZZ	5305-088-9044	SCREW, MACHINE: HARNESS MTG, NO. 10-32 THD SIZE, 5/16 IN. LG MS35207-260 (96906)		EA	4	*	*	*	*	*	*	*	*	3	16
PAOZZ	5310-014-5850	WASHER, FLAT: HARNESS MTG MS27183-42 (96906)		EA	4	*	*	*	*	*	*	*	*	3	17
PAOZZ	5310-045-3296	WASHER, LOCK: HARNESS MTG MS35338-43 (96906)		EA	4	*	*	*	*	*	*	*	*	3	18
PAOZZ	5310-061-7326	NUT, SELF-LOCKING: GROUND LEAD, NO. 10-32 THD SIZE MS21045-3 (96906)		EA	1	*	*	*	*	*	*	*	*	3	19
PAOZZ	5310-014-5850	WASHER, FLAT: GROUND LEAD MS37183-42 (96906)		EA	3	*	*	*	*	*	*	*	*	3	20
PAOZZ	5305-989-7435	SCREW, MACHINE: GROUND LEAD, NO. 10-32 THD SIZE, 5/8 IN. LG MS35207-264 (96906)		EA	1	*	*	*	*	*	*	*	*	3	21
MFOFF		LEAD, ELECTRICAL MANUFACTURE FROM:		EA	2									3	22
		WIRE, ELECTRICAL, AS REQUIRED M5086-1-16-9 (81349)		EA											
		TERMINAL LUG, 1 EA MS25036-153 (96906)		EA											
		TERMINAL WIRE, 1 EA 13211E8288 (97403)		EA											
MFOFF		LEAD, ELECTRICAL MANUFACTURE FROM:		EA	1									3	23
		WIRE, ELECTRICAL, AS REQUIRED M5086-1-16-9 (81349)		EA											
		TERMINAL LUG, 1 EA MS25036-153 (96906)		EA											
		TERMINAL LUG, 1 EA MS25036-106 (96906)		EA											
MFOFF		WIRING HARNESS: CONTROL PANEL 13214E3462 (97403) MANUFACTURE FROM:		EA	1									3	24
		CONNECTOR RECEPTACLE, 1 EA 13211E8399C28-17P (97403)		EA											
		TERMINAL LUG, 1 EA MS25036-153 (96906)		EA											
		TERMINAL LUG, 1 EA MS25036-108 (96906)		EA											
		TERMINAL WIRE, 7 EA 13211E8288 (97403)		EA											
		TERMINAL LUG, 2 EA MS25036-106 (96906)		EA											
		TAPE, LACING AND TYING, AS REQUIRED MILT43435TYPE1FINISHB (81349)		EA											
		WIRE, ELECTRICAL, AS REQUIRED M5086-1-16-9 (81349)		EA											
		INSULATION SLEEVING AS REQUIRED MILI23053-2CL1 (81349)		EA											
PBOZZ	5325-286-6047	GROMMET: THERMOSTAT CAPILLARY TUBE MS35490-1 (96906)		EA	1	*	*	*	*	*	*	*	*	3	25

(1)	(2)	(3)	(4)	(5)	(6)			(7)			(8)	(9)	(10)			
SMR CODE	FEDERAL STOCK NUMBER	DESCRIPTION	USABLE ON CODE	UNIT OF MEAS	QTY INC IN UNIT	30-DAY DS MAINT ALLOWANCE (a) (b) (c)			30-DAY GS MAINT ALLOWANCE (a) (b) (c)			1-YR ALW PER EQUIP CNTGY	DEPOT MAINT ALW PER EQUIP	ILLUS-TRATION (a) (b)	FIG. NO.	ITEM NO.
PAOZZ	5305-984-6194	SCREW, MACHINE: THERMOSTAT BULB MTG, NO. 8-32 THD SIZE, 5/8 IN. LG MS35206-246 (96906)		EA	1	*	*	*	*	*	*	*	*		3	26
PAOZZ	5340-105-8328	CLAMP, LOOP: THERMOSTAT BULB MTG MS21104D6 (96906)		EA	1	*	*	*	*	*	*	*	*		3	27
XBOZZ		GROMMET: THERMOSTAT CAPILLARY TUBE 1000 (75543)		EA	1										3	28
XBOOO		CONTROL PANEL 13218E9909 (97403)		EA	1										3	29
PAOZZ	5320-932-1972	RIVET, BLIND: INFORMATION PLATE MTG AD42H (07707)		EA	6	*	*	*	*	*	*	*	*		3	30
XBOZZ		PLATE, INFORMATION: CONTROL PANEL 13218E9912 (97403)		EA	1										3	31
		GROUP 04 - BLOCK-OFF PANEL ASSEMBLY														
XBOZZ		BLOCK-OFF PANEL ASSEMBLY 13214E3665 (97403)		EA	1										4	
PAOZZ	5310-081-8087	NUT, SELF-LOCKING: COVER MTG, NO. 6-32 THD SIZE MS21044N06 (96906)		EA	4	*	*	*	*	*	*	*	*		4	1
PAOZZ	5305-889-3001	SCREW, MACHINE: COVER MTG, NO. 6-32 THD SIZE, 5/8 IN. LG MS35206-231 (96906)		EA	4	*	*	*	*	*	*	*	*		4	2
XBOZZ		COVER: ALTERNATOR ELECTRICAL CONNECTOR 13214E3471-2 (97403)		EA	1										4	3
PAOZZ	5305-053-1114	SCREW, TAPPING: COVER MTG, NO. 4-24 THD SIZE, 1/2 IN. LG MS24621-11 (96906)		EA	4	*	*	*	*	*	*	*	*		4	4
XBOZZ		RETAINER RING: ELECTRICAL CONNECTOR MTG C6974-20-41 (78553)		EA	1										4	5
XBOZZ		COVER: ALTERNATOR ELECTRICAL CONNECTOR 13214E3471-1 (97403)		EA	1										4	6
XBOZZ		BLOCK-OFF 13214E3689 (97403)		EA	1										4	7
		GROUP 05 - FAN ASSEMBLY														
PAOZZ	5305-984-6195	SCREW, MACHINE: FAN GUARD MTG, NO. 8-32 THD SIZE, 3/4 IN. LG MS35206-247 (96906)		EA	8	*	*	*	*	*	*	*	*		5	1
PAOZZ	5310-045-3299	WASHER, LOCK: FAN GUARD MTG MS35338-42 (96906)		EA	8	*	*	*	*	*	*	*	*		5	2
PAOZZ	5310-821-2366	WASHER, FLAT: FAN GUARD MTG 13214E3469 (97403)		EA	8	*	*	*	*	*	*	*	*		5	3
XBOOO		GUARD, FAN 13214E3612 (97403)		EA	1										5	4
PAOZZ	5305-929-6558	SCREW, SET: CONDENSER FAN MTG, 1/4-20 THD SIZE, 3/4 IN. LG MS51021-62 (96906)		EA	2	*	*	*	*	*	*	*	*		5	5

SMR CODE	FEDERAL STOCK NUMBER	DESCRIPTION REF NUMBER & MFR CODE	USABLE ON CODE	UNIT OF MEAS	QTY INC IN UNIT	(6) 30-DAY DS MAINT ALLOWANCE			(7) 30-DAY GS MAINT ALLOWANCE			(8) 1-YR ALW PER EQUIP	(9) DEPOT MAINT ALW PER EQUIP	(10) ILLUS-TRATION FIG. NO.	(b) ITEM NO.
						(a) 1-20	(b) 21-50	(c) 51-100	(a) 1-20	(b) 21-50	(c) 51-100	CNTGY	EQUIP	(a)	
XBOZZ		IMPELLER, FAN, AXIAL: CONDENSER 13214E3694 (97403)		EA	1									5	6
PAOZZ	5315-730-4570	KEY, MACHINE: CONDENSER FAN MTG MS20066-145 (96906)		EA	1	*	*	*	*	*	*	*	*	5	7
PAOZZ	5305-984-6194	SCREW, MACHINE: INLET RING MTG, NO. 8-32 THD SIZE, 5/8 IN. LG MS35206-246 (96906)		EA	6	*	*	*	*	*	*	*	*	5	8
PAOZZ	5310-809-8544	WASHER, FLAT: INLET RING MTG MS27183-7 (96906)		EA	6	*	*	*	*	*	*	*	*	5	9
PAOZZ	5310-045-3299	WASHER, LOCK: INLET RING MTG MS35338-42 (96906)		EA	6	*	*	*	*	*	*	*	*	5	10
XBOZZ		RING, INLET, FAN 13214E3547 (97403)		EA	1									5	11
PAOZZ	5305-929-6558	SCREW, SET: EVAPORATE FAN MTG. 1/4-20 THD SIZE, 3/4 IN. LG MS51021-62 (96996)		EA	2	*	*	*	*	*	*	*	*	5	12
XBOZZ		IMPELLER, FAN CENTRIFUGAL R661-72D113 (97450)		EA	1									5	13
XBOZZ	5315-730-4564	KEY, MAHCINE: EVAPORATE FAN MTG MS20066-143 (96906)		EA	1									5	14
PAOZZ	5305-984-6194	SCREW, MACHINE: BAFFLE MTG, NO. 8-32 THD SIZE, 5/8 IN. LG MS35206-246 (96906)		EA	4	*	*	*	*	*	*	*	*	5	15
PAOZZ	5310-809-8544	WASHER, FLAT: BAFFLE MTG MS27183-7 (96906)		EA	4	*	*	*	*	*	*	*	*	5	16
PAOZZ	5310-045-3299	WASHER, LOCK: BAFFLE MTG MS35338-42 (96906)		EA	4	*	*	*	*	*	*	*	*	5	17
PAOZZ		SCREW, MACHINE: BRACKET MTG, NO. 10-32 THD SIZE, 1/4 IN. LG MS35191-268 (96906)		EA	4	*	*	*	*	*	*	*	*	5	18
XBOOO		BRACKET: BAFFLE MTG 13214E3627 (97403)		EA	2									5	19
XBOZZ		BAFFLE 13214E3623 (97403)		EA	1									5	20
PAOZZ	5310-087-4652	NUT, SELF-LOCKING: FAN MOTOR MTG, 3/8-16 THD SIZE MS51922-17 (96906)		EA	4	*	*	*	*	*	*	*	*	5	21
PAOZZ	5310-080-6004	WASHER, FLAT: FAN MOTOR MTG MS27183-14 (96906)		EA	4	*	*	*	*	*	*	*	*	5	22
PAOZZ	5305-269-3212	SCREW, MACHINE: FAN MOTOR MTG 3/18-16 THD SIZE, 1 1/8 IN. LG MS90725-61 (96906)		EA	4	*	*	*	*	*	*	*	*	5	23
PAOZZ	5305-225-8503	SCREW, MACHINE: FAN MOTOR MTG 5/16-18 THD SIZE, 1 3/4 IN. LG MS90725-39 (96906)		EA	2	*	*	*	*	*	*	*	*	5	24
XBOZZ		SLEEVE: FAN MOTOR MTG 13217E5636 (97403)		EA	2									5	25
PAOZZ	5310-081-4219	WASHER, FLAT: FAN MOTOR MTG MS27183-12 (96906)		EA	2	*	*	*	*	*	*	*	*	5	26
PAOZZ	5310-407-9566	WASHER, LOCK: FAN MOTOR MTG MS35338-45 (96906)		EA	2	*	*	*	*	*	*	*	*	5	27
PAOFF	6105-103-4514	MOTOR, ALTERNATING CURRENT 4730-18 (64731)		EA	1	*	1	1	*	1	1	14	12	5	28
XBOZZ		BRACKET, MOTOR MTG 13214E3625 (97403)		EA	1									5	29

SMR CODE	FEDERAL STOCK NUMBER	DESCRIPTION REF NUMBER & MFR CODE	USABLE ON CODE	UNIT OF MEAS	(5) QTY INC IN UNIT	(6) 30-DAY DS MAINT ALLOWANCE			(7) 30-DAY GS MAINT ALLOWANCE			(8) 1-YR ALW 100 EQUIP CNTGY	(9) DEPOT MAINT ALW 100 EQUIP	(10) ILLUS- TRATION	
						(a)	(b)	(c)	(a)	(b)	(c)			(a)	(b)
GROUP 06 - MOTOR ASSEMBLY															
PAOFF	6105-103-4514	MOTOR, ALTERNATING CURRENT 13214E3728-8		EA	1	*	1	1	*	1	1	14	12	6	
PAOZZ		SCREW: END BELL MTG 02-009264-005 (64731)		EA	4	*	*	*	*	*	*	*	*	6	1
XAFZZ		END BELL 02-009350-000 (64731)		EA	1									6	2
PAFFF	3110-554-3459	BEARING 01-005248-084 (64731)		EA	2	1	1	2	1	1	1	28	26	6	3
XAFZZ		ROTOR AND SHAFT 02-010542-002 (64731)		EA	1									6	4
PAOZZ		SCREW: CONNECTOR MTG 02-009264-004 (64731)		EA	4	*	*	*	*	*	*	*	*	6	5
PAOZZ	5935-821-0345	CONNECTOR: MOTOR MS3102R14S6P (96906)		EA	1	*	*	*	*	*	*	*	*	6	6
PAOZZ		SCREW, TERMINAL BOX MTG 02-009264-003 (64731)		EA	4	*	*	*	*	*	*	*	*	6	7
XBOZZ		TERMINAL BOX 02-009089-000 (64731)		EA	1									6	8
XBOZZ	4130-106-1971	OVERLOAD PROTECTOR 01-008773-020 (64731)		EA	1									6	9
XAFZZ		FRAME WITH WOUND STATOR 02-010542-001 (64731)		EA	1									6	10
GROUP 07 - HEATER ASSEMBLY															
XBOZZ		CLAMP: HEATER RETAINER 13214E3416 (97403)		EA	6									7	1
PAOZZ	5310-880-9344	WASHER, RETAINING: CLAMP MTG 12-11014-12 (94222)		EA	6	*	*	*	*	*	*	*	*	7	2
PAOZZ	5305-163-8349	SCREW, PANEL FASTENER: CLAMP MTG 12-11-613-11 (94222)		EA	6	*	*	*	*	*	*	*	*	7	3
PAOZZ	4540-110-9660	HEATING ELEMENT: ELECTRICAL 13214E3698-1 (97403)		EA	6	*	1	2	*	1	2	18	15	7	4
PAOZZ	5305-857-5867	SCREW, MACHINE: SUPPORT MTG, NO. 10-32 THD SIZE, 1/2 IN. LG MS9122-03 (96906)		EA	2	*	*	*	*	*	*	*	*	7	5
PAOZZ	5310-809-8546	WASHER, FLAT: SUPPORT MTG MS27183-8 (96906)		EA	2	*	*	*	*	*	*	*	*	7	6
PAOZZ	5310-877-5797	NUT, SELF-LOCKING: SUPPORT MTG, NO. 10-32 THD SIZE MS21044N3 (96906)		EA	4	*	*	*	*	*	*	*	*	7	7
PAOZZ	5330-119-7503	WASHER, PACKING: SUPPORT MTG NAS1523C3F (80205)		EA	4	*	*	*	*	*	*	*	*	7	8
PAOZZ	5305-989-7435	SCREW, MACHINE: SUPPORT MTG, NO. 10-32 THD SIZE, 5/8 IN. LG MS35207-264 (96906)		EA	1									7	9
XBOZZ		SUPPORT, HEATER 13214E3629-1 (97403)		EA	1									7	10

(1)	(2)	(3)	(4)	(5)	(6)			(7)			(8)	(9)	(10)			
SMR	FEDERAL	DESCRIPTION	USABLE	UNIT	QTY	30-DAY DS MAINT ALLOWANCE			30-DAY GS MAINT ALLOWANCE			1-YR	DEPOT	ILLUS-TRATION		
CODE	STOCK		ON	OF	INC	(a)	(b)	(c)	(a)	(b)	(c)	ALW	ALW	(a)	(b)	
	NUMBER	REF NUMBER & MFR CODE	CODE	MEAS	UNIT	1-20	21-50	51-100	1-20	21-50	51-100	EQUIP	PER	FIG.	ITEM	
												CNTGY	EQUIP	NO.	NO.	
GROUP 08 - WIRING HARNESS AND CLAMPS																
PAOZZ	5305-984-6195	SCREW, MACHINE: THERMOSTAT MTG, NO. 8-32 THD SIZE, 3/4 IN. LG MS35206-247 (96906)		EA	2	*	*	*	*	*	*	*	*	8	1	
XBOZZ		GASKET: THERMOSTAT MTG 13211E8273 (97403)		EA	1									8	2	
PAOZZ	5305-053-1114	SCREW, TAPPING: HARNESS MTG, NO. 4-24 THD SIZE, 1/2 IN. LG MS24621-11 (96906)		EA	4	*	*	*	*	*	*	*	*	8	3	
XBOZZ		CAP, ELECTRICAL CONNECTOR MS25043-20D (96906)		EA	1									8	4	
XBOZZ		GASKET: HARNESS MTG MS51007-7 (96906)		EA	1									8	5	
PAOZZ	5325-263-6632	GROMMET: PRESSURE SWITCH ENCLOSURE MS35490-6 (96906)		EA	1	*	*	*	*	*	*	*	*	8	6	
PAOZZ	5310-060-2039	NUT, SELF-LOCKING: THERMOSTAT MTG, NO. 8-32 THD SIZE MS21044D08 (96906)		EA	2	*	*	*	*	*	*	*	*	8	7	
PAOZZ	5310-809-8544	WASHER, FLAT: THERMOSTAT MTG MS27183-7 (96906)		EA	2	*	*	*	*	*	*	*	*	8	8	
PAOZZ	5305-984-6194	SCREW, MACHINE: THERMOSTAT MTG, NO. 8-32 THD SIZE, 5/8 IN. LG MS35206-246 (96906)		EA	2	*	*	*	*	*	*	*	*	8	9	
MFOFF		WIRING HARNESS: HEATER THERMOSTAT 13214E3457-1 (97403) MANUFACTURE FROM: CONNECTOR, 1 EA MS3100R16-10P (96906) THERMOSTAT, 1 EA MWA1256 (82647) WIRE, ELECTRICAL, AS REQUIRED M5086-1-16-9 (81349) INSULATION SLEEVING, AS REQUIRED MILI23053-2CL1 (81349) TERMINAL LUG, 4 EA MS25036-108 (96906)		EA	1										8	10
MFOFF		LEAD, ELECTRICAL MANUFACTURE FROM: WIRE, ELECTRICAL, AS REQUIRED M5086-1-16-9 (81349) TERMINAL LUG, 2 EA MS25036-108 (96906)		EA	8										8	11
PAOZZ	5310-088-0551	NUT, SELF-LOCKING: HARNESS MTG, NO. 4-40 THD SIZE MS21044N04 (96906)		EA	4	*	*	*	*	*	*	*	*	8	12	
PAOZZ	5305-984-4976	SCREW, MACHINE: HARNESS MTG. NO. 4-40 THD SIZE, 3/4 IN. LG MS35206-219 (96906)		EA	4	*	*	*	*	*	*	*	*	8	13	
PAOZZ	5305-995-3442	SCREW, MACHINE: CLAMP MTG, NO. 10-32 THD SIZE, 1 1/4 IN. LG MS35207-268 (96906)		EA	2	*	*	*	*	*	*	*	*	8	14	
XBOZZ		SPACER: CLAMP MTG, 1/2 IN. LG 13211E8376-1 (97403)		EA	2									8	15	
PAOZZ	5340-020-0383	CLAMP, LOOP: HARNESS MTG, 9/16 IN. NOM MS21104D9 (96906)		EA	2	*	*	*	*	*	*	*	*	8	16	

SMR CODE	FEDERAL STOCK NUMBER	DESCRIPTION REF NUMBER & MFR CODE	USABLE ON CODE	QTY INC IN UNIT	(6) 30-DAY DS MAINT ALLOWANCE			(7) 30-DAY GS MAINT ALLOWANCE			(8)	(9)	(10) ILLUS- TRATION		
					(a)	(b)	(c)	(a)	(b)	(c)	1-YR ALW PER EQUIP CNTGY	DEPOT MAINT PER EQUIP	(a)	(b)	
PAOZZ	5310-081-8087	NUT, SELF-LOCKING: RELAY MTG, NO. 6-32 THD SIZE MS21044N06 (96906)	EA	2	*	*	*	*	*	*	*	*	8	17	
PAOZZ	5310-082-1404	WASHER, FLAT: RELAY MTG MS27183-6 (96906)	EA	2	*	*	*	*	*	*	*	*	8	18	
PAOZZ	5305-984-6222	SCREW, MACHINE: RELAY MTG, NO. 6-32 THD SIZE, 1 1/4 IN. LG MS35206-235 (96906)	EA	2	*	*	*	*	*	*	*	*	8	19	
PBOZZ	5945-106-7100	RELAY: FAN SPEED CONTROL MTS004 (04009)	EA	1	*	*	*	*	*	*	*	*	8	20	
PAOZZ	5310-811-3494	NUT, SELF-LOCKING: CAPACITOR STRAP MTG, NO. 8-32 THD SIZE MS21044N08 (96906)	EA	2	*	*	*	*	*	*	*	*	8	21	
PAOZZ	5305-984-6194	SCREW, MACHINE: CAPACITOR STRAP MTG, NO. 8-32 THD SIZE, 5/8 IN. LG MS35206-246 (96906)	EA	2	*	*	*	*	*	*	*	*	8	22	
XBOZZ		STRAP, RETAINING: CAPACITOR MTG 13214E3531 (97403)	EA	1									8	23	
PAOZZ		CAPACITOR: FAN MOTOR 13214E3529-2 (97403)	EA	1	*	1	2	*	1	2	21	19	8	24	
PAOZZ		CAPACITOR: COMPRESSOR 13214E3529-5 (97403)	EA	1	*	1	2	*	1	2	21	19	8	25	
PAOZZ	5305-984-6194	SCREW, MACHINE: CAPACITOR BRACKET MTG, NO. 8-32 THD SIZE, 5/8 IN. LG MS35206-246 (96906)	EA	4	*	*	*	*	*	*	*	*	8	26	
XBOZZ		BRACKET, MOUNTING: CAPACITOR 13214E3527 (97403)	EA	1									8	27	
MFOFF		WIRING HARNESS 13218E9894 (97403) MANUFACTURE FROM: CONNECTOR, 1 EA MS3106R32-7S (96906) CONNECTOR, 1 EA MS3100R28-17S (96906) CONNECTOR, 1 EA MS3100R20-4PX (96906) CONNECTOR, 1 EA MS3106R14S6S (96906) RETAINER RING, 1 EA C6974-20-41 (78553) CONNECTOR, BOX, ELECTRICAL, 2 EA DB92100 (49367) SWITCH, PRESSURE, 1 EA 6PS306N405N285L (82647) VALVE, SOLENOID, 2 EA 0158 (93781) THERMOSTAT, 1 EA 416-25 (93410) INSULATION SLEEVING, AS REQUIRED MILI23053-2CL1 (81349) TERMINAL LUG, 2 EA MS25036-153 (96906) TERMINAL, WIRE, 10 EA 13216E9515 (97403) TAPE, IMPREGNATED, LACING AND TYING, AS REQUIRED SIZE 3, TYPE 1, FINISH B MILT43435 (81349)	EA	1										8	28

(1)	(2)	(3)	(4)	(5)	(6)	(7)	(8)	(9)	(10)					
SMR	FEDERAL	DESCRIPTION	USABLE	QTY	30-DAY DS MAINT ALLOWANCE			30-DAY GS MAINT ALLOWANCE			1-YR	DEPOT	ILLUS-	
CODE	STOCK		ON	INC	(a)	(b)	(c)	(a)	(b)	(c)	ALW	MAINT	TRATION	
	NUMBER	REF NUMBER & MFR CODE	CODE	OF							PER	ALW	(a) (b)	
				MEAS	UNIT	1-20	21-50	51-100	1-20	21-50	51-100	EQUIP	100	FIG. ITEM
												CNTGY	EQUIP	NO. NO.
		PLUG, END SEAL, 5 EA MS25251-12 (96906)												
		PLUG, END SEAL, 6 EA MS25251-16 (96906)												
		WIRE, ELECTRICAL, AS REQUIRED M5086-1-16-9 (81349)												
		WIRE, ELECTRICAL, AS REQUIRED M5086-1-12-9 (81349)												
		PLATE, MOUNTING: THERMOSTAT, 1 EA R655-71C105 (94760)												
MFOFF		WIRING HARNESS 13214E3723 (97403) MANUFACTURE FROM:		EA	1									8 29
		CONNECTOR, 1 EA MS3106R28-9P (96906)												
		CONNECTOR, 1 EA MS3106R20-15S												
		CONNECTOR, 1 EA MS3106R16-10S (96906)												
		TERMINAL LUG, 4 EA 13216E6191-2 (97403)												
		TAPE, IMPREGNATED, LACING AND TYING, AS REQUIRED SIZE 3, TYPE 1, FINISH B MILT43435 (81349)												
		WIRE, ELECTRICAL, AS REQUIRED M5086-1-14-9 (81349)												
		WIRE, ELECTRICAL, AS REQUIRED M5086-1-16-9 (81349)												
		PLUG, END SEAL, 2 EA MS25251-16 (96906)												
		GROUP 09 - MIST ELIMINATOR, EVAPORATOR AND CONDENSER COILS, VALVES, DEHYDRATOR, RECEIVER, SIGHT GLASS AND PIPING												
PAOZZ	5305-857-5867	SCREW, MACHINE: COIL MTG, NO. 10-32 THD SIZE, 1/2 IN. LG MS9122-03 (96906)		EA	4	*	*	*	*	*	*	*	*	9 1
PAOZZ	5310-809-8546	WASHER, FLAT: COIL MTG MS27183-8 (96906)		EA	4	*	*	*	*	*	*	*	*	9 2
XBOZZ		BRACKET: MIST ELIMINATOR MTG R661-71C139 (97450)		EA	1									9 3
XBOZZ		BRACKET: MIST ELIMINATOR MTG R661-71C141 (97450)		EA	1									9 4
XBOZZ		MIST ELIMINATOR R665-71C140-2 (97450)		EA	1									9 5
PBFZZ	4730-529-4017	COUPLING, REDUCING W1019 (41947)		EA	1	*	*	*	*	*	*	*	*	9 6
MBFZZ		TUBE, COPPER: COIL TO VALVE, 3/8 IN. OD, .032 IN. WALL THICK MANUFACTURE FROM:		EA	1									9 7
		TUBE, COPPER, AS REQUIRED ASTMB2803-8 (81346)												

(1)	(2)	(3)	(4)	(5)	(6)			(7)			(8)	(9)	(10)			
SMR CODE	FEDERAL STOCK NUMBER	DESCRIPTION	USABLE ON CODE	UNIT OF MEAS	QTY INC IN UNIT	30-DAY DS MAINT ALLOWANCE (a) (b) (c)			30-DAY GS MAINT ALLOWANCE (a) (b) (c)			1-YR ALW PER EQUIP	DEPOT MAINT ALW PER EQUIP	ILLUS-TRATION (a) (b)	FIG. ITEM NO. NO.	
MBFZZ		TUBE, COPPER: REDUCER TO BULB WELL, 1/2 IN. OD, .032 IN. WALL THK MANUFACTURE FROM: TUBE, COPPER, AS REQUIRED ASTMB280-1-2 (81346)		EA	1										9	8
PBFFF		COIL, EVAPORATOR R661-72D115 (97450)		EA	1	*	*	*	*	*	*	*	*	*	9	9
PAOZZ		TAPE, INSULATION: VALVE BULB SEAL PT1 (87698)		RL	V	*	*	*	*	*	*	*	*	*	9	10
PAOZZ	5305-984-6194	SCREW, MACHINE: CLAMP MTG, NO. 8-32 THD SIZE, 5/8 IN. LG MS35206-246 (96906)		EA	1	*	*	*	*	*	*	*	*	*	9	11
PAOZZ	5340-105-8328	CLAMP, LOOP: 3/8 IN. NOM. SIZE, LINE MTG MS21104D6 (96906)		EA	1	*	*	*	*	*	*	*	*	*	9	12
PBFZZ	4730-264-9153	COUPLING: TUBE TO TUBE W1009 (41947)		EA	1	*	*	*	*	*	*	*	*	*	9	13
MBFZZ		TUBE, COOPER: COUPLER TO VALVE, 3/8 IN. OD, .032 IN. WALL THK MANUFACTURE FROM: TUBE, COPPER, AS REQUIRED ASTMB280-3-8 (81346)		EA	1										9	14
PBFZZ	4730-821-9184	TEE: 1/2 IN. X 1/2 IN. X 1/4 IN. W40350 (41947)		EA	1	*	*	*	*	*	*	*	*	*	9	15
MBFZZ		TUBE, COPPER: TEE TO TEE, 1/2 IN. OD, .032 IN. WALL THK MANUFACTURE FROM: TUBE, COPPER, AS REQUIRED ASTMB280-1-2 (81346)		EA	1										9	16
XBOZZ		GROMMET, SPLIT: 1/2 IN. ID MS35490-14 (96906)		EA	1										9	17
PAFZZ	4730-189-2737	NUT, FLARE: 1/4 IN. FLARE A5051 (41947)		EA	1	*	*	*	*	*	*	*	*	*	9	18
MBFZZ		TUBE, COPPER: VALVE TO TEE, 1/4 IN. OD, .030 IN. WALL THK MANUFACTURE FROM: TUBE, COPPER, AS REQUIRED ASTMB280-1-4 (81346)		EA	1										9	19
PAOZZ	5310-637-9541	WASHER, LOCK: VALVE MTG MS35338-46 (96906)		EA	2	*	*	*	*	*	*	*	*	*	9	20
XBOZZ		SPACER: VALVE, MTG, 7/16 IN. LG 13211E8376-3 (94703)		EA	2										9	21
PAFZZ	4820-112-0047	VALVE, EXPANSION: EVAPORATOR CONTROL TCL106HW120-10A (70255)		EA	1	*	1	1	*	1	1	14	12		9	22
PBFZZ	4730-821-9184	TEE: 1/2 IN. X 1/2 IN. X 1/4 IN. W40350 (41947)		EA	1	*	*	*	*	*	*	*	*	*	9	23
MBFZZ		TUBE, COPPER: TEE TO BULB WELL, 1/2 IN. OD, .032 IN. WALL THK MANUFACTURE FROM: TUBE, COPPER, AS REQUIRED ASTMB280-1-2 (81346)		EA	1										9	24
MBFZZ		TUBE, COPPER: EXPANSION VALVE BULB WELL, 3/4 IN. OD, .035 IN. WALL THK MANUFACTURE FROM: TUBE, COOPER, AS REQUIRED ASTMB280-3-4 (81346)		EA	1										9	25

(1)	(2)	(3)	(4)	(5)	(6)			(7)			(8)	(9)	(10)		
SMR CODE	FEDERAL STOCK NUMBER	DESCRIPTION	USABLE ON CODE	UNIT OF MEAS	QTY INC	30-DAY DS MAINT ALLOWANCE			30-DAY GS MAINT ALLOWANCE			1-YR ALW PER EQUIP	DEPOT MAINT ALW PER EQUIP	ILLUS-TRATION	FIG. ITEM
CODE	NUMBER	REF NUMBER & MFR CODE			UNIT	(a)	(b)	(c)	(a)	(b)	(c)	CNTGY	EQUIP	NO.	NO.
MBFZZ		TUBE, COPPER: SIGHT GLASS TO COUPLING 3/8 IN. OD, .032 IN. WALL THK MANUFACTURE FROM: TUBE, COPPER, AS REQUIRED ASTMB280-3-8 (81346)		EA	1									9	26
PAOZZ	5310-811-3494	NUT, SELF-LOCKING: SIGHT GLASS BRACKET MTG, NO. 8-32 THD SIZE MS21044-044 (96906)		EA	2	*	*	*	*	*	*	*	*	9	27
XBOZZ		BRACKET: SIGHT GLASS MTG 13211E3419 (97403)		EA	1									9	28
PAOZZ	5310-809-8544	WASHER, FLAT: SIGHT GLASS MTG MS27183-7 (96906)		EA	2	*	*	*	*	*	*	*	*	9	29
PAOZZ	5305-984-6194	SCREW, MACHINE: SIGHT GLASS MTG, NO. 8-32 THD SIZE, 5/8 IN. LG MS35206-246 (96906)		EA	2	*	*	*	*	*	*	*	*	9	30
XBOZZ		GASKET: SIGHT GLASS MTG 13211E8255 (97403)		EA	1									9	31
XBOZZ		SPACER: SIGHT GLASS MTG 13211E8242 (97403)		EA	1									9	32
PAFZZ	4130-073-8404	SIGHT GLASS SAK13 (78462)		EA	1	*	1	2	*	1	2	21	18	9	33
PAOZZ	5305-995-3442	SCREW, MACHINE: CLAMP MTG, NO. 10-32 THD SIZE, 1 1/4 IN. LG MS35207-268 (96906)		EA	1	*	*	*	*	*	*	*	*	9	34
XBOZZ		SPACER: CLAMP MTG, 1/2 IN. LG 13211E8376-1 (97403)		EA	1									9	35
PAOZZ	5340-106-0549	CLAMP, LOOP: 1/4 IN. NOMINAL SIZE MS21104D4 (96906)		EA	1	*	*	*	*	*	*	*	*	9	36
PAOZZ	5340-105-8328	CLAMP, LOOP: 3/8 IN. NOMINAL SIZE MS21104D6 (96906)		EA	1	*	*	*	*	*	*	*	*	9	37
PAOZZ	5310-045-3296	WASHER, LOCK: CLAMP MTG MS35338-43 (96906)		EA	1	*	*	*	*	*	*	*	*	9	38
MBFZZ		TUBE, COPPER: SIGHT GLASS TO VALVE, 3/8 IN. OD, .032 IN. WALL THK MANUFACTURE FROM: TUBE, COPPER, AS REQUIRED ASTMB280-3-8 (81346)		EA	1									9	39
PBFZZ	4730-264-9151	COUPLING: TUBE TO TUBE W1003 (41947)		EA	1	*	*	*	*	*	*	*	*	9	40
MBFZZ		TUBE, COPPER: VALVE TO COUPLING, 1/4 IN. OD, .030 IN. WALL THK MANUFACTURE FROM: TUBE, COPPER, AS REQUIRED ASTMB280-1-4 (81346)		EA	1									9	41
XBOZZ	5325-286-6047	GROMMET: 1/8 IN. ID MS35490-1 (96906)		EA	1									9	42
PAOZZ	5310-877-5797	NUT, SELF-LOCKING: TUBE MTG, NO. 10-32 THD SIZE MS21044N3 (96906)		EA	1	*	*	*	*	*	*	*	*	9	43
XBOZZ		SPACER: TUBE MTG, 1/2 IN. LG 13211E8376-1 (97403)		EA	1									9	44
PAOZZ	5340-106-0549	CLAMP, LOOP: 1/4 IN. NOM SIZE MS21104D4 (96906)		EA	1	*	*	*	*	*	*	*	*	9	45
PAOZZ	5305-993-1851	SCREW, MACHINE: CLAMP MTG, NO. 10-32 THD SIZE, 1 IN. LG MS35207-267 (96906)		EA	1	*	*	*	*	*	*	*	*	9	46

(1)	(2)	(3)	(4)	(5)	(6)			(7)			(8)	(9)	(10)		
SMR CODE	FEDERAL STOCK NUMBER	DESCRIPTION REF NUMBER & MFR CODE	USABLE ON CODE	UNIT OF MEAS	QTY INC IN UNIT	30-DAY DS ALLOWANCE (a)	(b)	(c)	30-DAY GS ALLOWANCE (a)	(b)	(c)	1-YR ALW PER EQUIP CNTGY	DEPOT MAINT ALW PER EQUIP	ILLUS- TRATION (a)	ITEM NO. (b)
MBFZZ		TUBE, COPPER: VALVE TO TEE, 1/4 IN. OD .030 IN. WALL THK MANUFACTURE FROM: TUBE, COPPER, AS REQUIRED ASTMB280-1-4 (81346)		EA	1									9	47
XBOZZ	5325-263-6632	GROMMET: 1/4 IN. ID MS35490-6 (96906)		EA	1									9	48
XBOZZ		BUSHING, FLUSH W1706 (41947)		EA	1									9	49
PAOZZ	5310-637-9541	WASHER, LOCK: VALVE MTG MS35338-46 (96906)		EA	2	*	*	*	*	*	*	*	*	9	50
XBOZZ		SPACER: VALVE MTG, 7/16 IN. LG 13211E8376-3 (97403)		EA	2									9	51
PAFZZ	4820-107-0992	VALVE, EXPANSION: LIQUID QUENCH TCL25C15AXB1019C (70255)		EA	1	*	1	1	*	1	1	14	12	9	52
MBFZZ		TUBE, COPPER: COUPLING TO TEE, 1/4 IN. OD, .030 IN. WALL THK MANUFACTURE FROM: TUBE, COPPER, AS REQUIRED ASTMB280-1-4 (81346)		EA	1									9	53
PAOZZ	5305-989-7435	SCREW, MACHINE: CLAMP MTG, NO. 10-32 THD SIZE, 5/8 IN. LG MS35207-264 (96906)		EA	1	*	*	*	*	*	*	*	*	9	54
PAOZZ	5340-105-8328	CLAMP, LOOP: 3/8 IN. NOM SIZE MS21104D6 (96906)		EA	1	*	*	*	*	*	*	*	*	9	55
MBFZZ		TUBE, COPPER: VALVE TO TEE, 3/8 IN. OD, .032 IN. WALL THK MANUFACTURE FROM: TUBE, COPPER, AS REQUIRED ASTMB280-3-8 (81346)		EA	1									9	56
PBFZZ	4730-079-0267	TEE: 3/8 IN. X 3/8 IN. X 1/4 IN. W40324 (41947)		EA	1	*	*	*	*	*	*	*	*	9	57
PAOZZ	5305-984-6194	SCREW, MACHINE: BRACKET MTG, NO. 8-32 THD SIZE, 5/8 IN. LG MS35206-246 (96906)		EA	2	*	*	*	*	*	*	*	*	9	58
PAOZZ	5305-984-6193	SCREW, MACHINE: VALVE MTG, NO. 8-32 THD SIZE, 1/2 IN. LG MS35206-245 (96906)		EA	2	*	*	*	*	*	*	*	*	9	59
PAOZZ	5310-045-3299	WASHER, LOCK: VALVE MTG MS35338-42 (96906)		EA	2	*	*	*	*	*	*	*	*	9	60
XBOZZ		BRACKET: VALVE MTG 13214E3592-1 (97403)		EA	1									9	61
PAFZZ	4810-109-3830	VALVE, SOLENOID: LIQUID LINE 0158 (93781)		EA	1	*	1	1	*	1	1	14	12	9	62
PAFZZ	4130-73-8405	VALVE, PRESSURE RELIEF 13211E8369 (97403)		EA	1	*	1	1	*	1	1	14	12	9	63
MBFZZ		TUBE, COPPER: VALVE TO TEE, 3/8 IN. OD, .032 IN. WALL THK MANUFACTURE FROM: TUBE, COPPER, AS REQUIRED ASTMB280-3-8 (81346)		EA	1									9	64
PBFZZ	4730-143-8933	TEE: 3/8 IN. X 3/8 IN. X 1/4-18 NPTF W4229 (41947)		EA	1	*	*	*	*	*	*	*	*	9	65
MBFZZ		TUBE, COPPER: DRIER TO TEE, 3/8 IN. OD, .032 IN. WALL THK MANUFACTURE FROM: COPPER TUBE, AS REQUIRED ASTMB280-3-8 (81346)		EA	1									9	66

(1)	(2)	(3)	(4)	(5)	(6)			(7)			(8)	(9)	(10)			
SMR CODE	FEDERAL STOCK NUMBER	DESCRIPTION REF NUMBER & MFR CODE	USABLE ON CODE	UNIT OF MEAS	QTY INC IN UNIT	30-DAY DS MAINT ALLOWANCE (a) (b) (c)			30-DAY GS MAINT ALLOWANCE (a) (b) (c)			1-YR ALW PER 100 EQUIP CNTGY	DEPOT MAINT ALW PER 100 EQUIP	ILLUS-TRATION (a) (b)	FIG. ITEM NO. NO.	
PAOZZ	4730-189-2739	NUT, FLARE: 3/8 IN. FLARE A5052 (41947)		EA	1	*	*	*	*	*	*	*	*		9	67
PAOZZ		SCREW, MACHINE: BRACKET MTG. 1/4-28 THD SIZE, 5/8 IN. LG MS35207-280 (96906)		EA	3	*	*	*	*	*	*	*	*		9	68
PAOZZ		WASHER, LOCK: BRACKET MTG MS35338-44 (96906)		EA	3	*	*	*	*	*	*	*	*		9	69
PAOZZ		NUT, HEXAGON: DRIER MTG, 1/4-28 THD SIZE MS35650-3252 (96906)		EA	1	*	*	*	*	*	*	*	*		9	70
PAOZZ		WASHER, LOCK: DRIER MTG MS35338-44 (96906)		EA	1	*	*	*	*	*	*	*	*		9	71
PAOZZ		SCREW, MACHINE: DRIER MTG, 1/4-28 THD SIZE, 1 1/2 IN. LG MS35207-285 (96906)		EA	1	*	*	*	*	*	*	*	*		9	72
XBOZZ		BRACKET ASSEMBLY: DRIER MTG R655-71C122-1 (97450)		EA	1										9	73
PAOZZ	4730-189-2739	NUT, FLARE: 3/8 IN. FLARE A5052 (41947)		EA	1	*	*	*	*	*	*	*	*		9	74
PAFZZ	4130-071-3940	DEHYDRATOR C083 (78462)		EA	1	2	4	8	2	4	8	100	100		9	75
XBFZZ		TUBE, COPPER: DRIER TO COIL, 3/8 IN. OD, .032 IN. WALL THK MANUFACTURE FROM: TUBE, COPPER, AS REQUIRED ASTMB280-3-8 (81346)		EA	1										9	76
PAOZZ		NUT, HEXAGON: RECEIVER MTG, 1/4-28 THD SIZE MS35650-3252 (96906)		EA	2	*	*	*	*	*	*	*	*		9	77
PAOZZ		WASHER, LOCK: RECEIVER MTG MS35338-44 (96906)		EA	2	*	*	*	*	*	*	*	*		9	78
PAOZZ		SCREW, MACHINE: RECEIVER MTG, 1/4-28 THD SIZE, 2 IN. LG MS35207-287 (96906)		EA	2	*	*	*	*	*	*	*	*		9	79
XBOZZ		BRACKET ASSEMBLY: RECEIVER MTG R655-71C122-2 (97450)		EA	2										9	80
XBFZZ		TUBE, COPPER: RECEIVER TO TEE, 3/8 IN. OD, .032 IN. WALL THK MANUFACTURE FROM: TUBE, COPPER, AS REQUIRED ASTMB280-3-8 (81346)		EA	1										9	81
XBFZZ		RECEIVER 13214E3798-2 (97403)		EA	1										9	82
PAOZZ	5310-877-5797	NUT, SELF-LOCKING: CLAMP MTG, NO. 10-32 THD SIZE MS21044N3 (96906)		EA	1	*	*	*	*	*	*	*	*		9	83
PAOZZ	5305-989-7434	SCREW, MACHINE: CLAMP MTG, NO. 10-32 THD SIZE, 1/2 IN. LG MS35207-263 (96906)		EA	1	*	*	*	*	*	*	*	*		9	84
PAOZZ	5340-106-0549	CLAMP, LOOP: 1/4 IN. NOM SIZE MS21104D4 (96906)		EA	1	*	*	*	*	*	*	*	*		9	85
XBFFF		VALVE, CHARGING: DISCHARGE LINE VUS3-46AC (07295)		EA	1										9	86
XBFZZ		TUBE, COPPER: TEE TO VALVE, 1/4 IN. OD, .030 IN. WALL THK MANUFACTURE FROM: TUBE, COPPER, AS REQUIRED ASTMB280-1-4 (81346)		EA	1										9	87

SMR CODE	FEDERAL STOCK NUMBER	DESCRIPTION REF NUMBER & MFR CODE	USABLE ON CODE	UNIT OF MEAS	(5) QTY INC IN UNIT	(6) 30-DAY DS MAINT ALLOWANCE			(7) 30-DAY GS MAINT ALLOWANCE			(8) 1-YR ALW	(9) DEPOT MAINT ALW	(10) ILLUS- TRATION	
						(a)	(b)	(c)	(a)	(b)	(c)	PER EQUIP CNTGY	PER EQUIP	(a)	(b)
PBFZZ	4730-079-0267	TEE: 3/8 IN. X 3/8 IN. X 1/4 IN. W40324 (41947)		EA	1	*	*	*	*	*	*	*	*	9	88
MBFZZ		TUBE, COPPER: COIL TO TEE, 3/8 IN. OD. .032 IN. WALL THK MANUFACTURE FROM: TUBE, COPPER, AS REQUIRED ASTMB280-3-8 (81346)		EA	1									9	89
MBFZZ		TUBE, COPPER: RECEIVER TO COIL, 3/8 IN. OD, .032 IN. WALL THK MANUFACTURE FROM: TUBE, COPPER, AS REQUIRED ASTMB280-3-8 (81346) GROUP 10 - VALVES PRESSURE SWITCHES AND PIPING		EA	1									9	90
PAOZZ	5310-877-5797	NUT, SELF-LOCKING: CLAMP MTG, NO. 10-32 THD SIZE MS21044N3 (96906)		EA	1	*	*	*	*	*	*	*	*	10	1
PAOZZ	5340-106-0549	CLAMP, LOOP: 1/4 IN. NOMINAL SIZE MS21104D4 (96906)		EA	1	*	*	*	*	*	*	*	*	10	2
PAOZZ	5305-989-7434	SCREW, MACHINE: CLAMP MTG, NO. 10-32 THD SIZE, 1/2 IN. LG MS35207-263 (96906)		EA	1	*	*	*	*	*	*	*	*	10	3
XBFFF		VALVE, CHARGING: SUCTION LINE VUS3-46AC (07295)		EA	1									10	4
PAOZZ	5310-877-5797	NUT, SELF-LOCKING: BRACKET MTG, NO. 10-32 THD SIZE MS21044N3 (96906)		EA	2	*	*	*	*	*	*	*	*	10	5
PAOZZ	5305-989-7434	SCREW, MACHINE: BRACKET MTG, NO. 10-32 THD SIZE, 1/2 IN. LG MS35207-263 (96906)		EA	2	*	*	*	*	*	*	*	*	10	6
XBOZZ		BRACKET: SERVICE VALVE MTG R661-72C107 (97403)		EA	1									10	7
MBFZZ		TUBE, COPPER: TEE TO SERVICE VALVE, 1/4 IN. OD, .030 IN. WALL THK MANUFACTURE FROM: TUBE, COPPER, AS REQUIRED ASTMB280-1-4 (81346)		EA	1									10	8
PAFZZ		SWITCH, PRESSURE: FAN SPEED CONTROL 6PS306N405N285L (82647)		EA	1	*	1	1	*	1	1	14	12	10	9
PBFZZ	4730-769-3961	UNION, SWIVEL: PRESSURE SWITCH MTG, 1/4 IN. X 7/16-20 THD SIZE A13563 (41947)		EA	1	*	*	*	*	*	*	*	*	10	10
PBFZZ	4730-489-9656	TEE: 7/16-20 THD X 1/8 NPTF X 7/16-20 THD A4859 (41947)		EA	1	*	*	*	*	*	*	*	*	10	11
PAOZZ	5310-877-5797	NUT, SELF-LOCKING: CLAMP MTG, NO. 10-32 THD SIZE MS21044N3 (96906)		EA	1	*	*	*	*	*	*	*	*	10	12
XBOZZ		SPACER: CLAMP MTG, 1/2 IN. LG 13211E8376-1 (97403)		EA	1									10	13
PAOZZ	5340-105-8328	CLAMP, LOOP: 3/8 IN. NOMINAL SIZE MS21104D6 (96906)		EA	1	*	*	*	*	*	*	*	*	10	14
PAOZZ	5305-995-3442	SCREW, MACHINE: CLAMP MTG, NO. 10-32 THD SIZE, 1 1/4 IN. LG MS35207-268 (96906)		EA	1	*	*	*	*	*	*	*	*	10	15
MBFZZ		TUBE, COPPER: COIL TO TEE, 3/8 IN. OD, .032 IN. WALL THK MANUFACTURE FROM: TUBE, COPPER, AS REQUIRED ASTMB280-3-8 (81346)		EA	1									10	16

SMR CODE	FEDERAL STOCK NUMBER	DESCRIPTION REF NUMBER & MFR CODE	USABLE ON CODE	UNIT OF MEAS	QTY INC IN UNIT	(6) 30-DAY DS MAINT ALLOWANCE			(7) 30-DAY GS MAINT ALLOWANCE			(8) 1-YR ALW PER 100 EQUIP CNTGY	(9) DEPOT MAINT ALW PER 100 EQUIP NO.	(10) ILLUS-TRATION (a) FIG. NO.	(b) ITEM NO.
						(a)	(b)	(c)	(a)	(b)	(c)				
PAOZZ	5305-993-1849	SCREW, MACHINE: COIL MTG, NO. 10-32 THD SIZE, 3/4 IN. LG MS35207-265 (96906)		EA	6	*	*	*	*	*	*	*	*	10	17
PAOZZ	5310-821-2366	WASHER, FLAT: COIL MTG 13214E3469 (97403)		EA	6	*	*	*	*	*	*	*	*	10	18
PBFFF	4130-902-1482	COIL CONDENSER 13214E3708 (97403)		EA	1	*	*	*	*	*	*	*	*	10	19
PBFZZ	4730-926-9649	TEE: 3/8 IN. X 3/8 IN. X 1/8-27 NPTF W4230 (41947)		EA	1	*	*	*	*	*	*	*	*	10	20
MBFZZ		TUBE, COPPER: TEE TO TEE, 3/8 IN. OD, .032 IN. WALL THK MANUFACTURE FROM: TUBE, COPPER, AS REQUIRED ASTMB280-3-8 (81346)		EA	1									10	21
MBFZZ		TUBE, COPPER: VALVE TO TEE, 3/8 IN. OD, .032 IN. WALL THK MANUFACTURE FROM: TUBE, COPPER, AS REQUIRED ASTMB280-3-8 (81346)		EA	1									10	22
MBFZZ		TUBE, COPPER: TEE TO TEE, 3/8 IN. OD, .032 IN. WALL THK MANUFACTURE FROM: TUBE, COPPER, AS REQUIRED ASTMB280-3-8 (81346)		EA	1									10	23
PBFZZ	4730-263-6460	TEE: 3/8 IN. X 3/8 IN. X 3/8 IN. W4000 (41947)		EA	1	*	*	*	*	*	*	*	*	10	24
PBFZZ	4730-079-0267	TEE: 3/8 IN. X 3/8 IN. X 1/4 IN. W40324 (41947)		EA	1	*	*	*	*	*	*	*	*	10	25
MBFZZ		TUBE, COPPER: VALVE TO TEE, 1/4 IN. OD, .030 IN. WALL THK MANUFACTURE FROM: TUBE, COPPER, AS REQUIRED ASTMB280-1-4 (81346)		EA	1									10	26
PAOZZ	5305-984-4989	SCREW, MACHINE: VALVE MTG, NO. 6-32 THD SIZE, 7/16 IN. LG MS35206-229 (96906)		EA	2	*	*	*	*	*	*	*	*	10	27
PAOZZ	5310-045-3299	WASHER, LOCK: VALVE MTG MS35338-42 (96906)		EA	2	*	*	*	*	*	*	*	*	10	28
PAOZZ	5305-984-6193	SCREW, MACHINE: BRACKET MTG, NO. 8-32 THD SIZE, 1/2 IN. LG MS35206-245 (96906)		EA	4	*	*	*	*	*	*	*	*	10	29
PAOZZ	5310-809-8544	WASHER, FLAT: BRACKET MTG MS27183-7 (96906)		EA	4	*	*	*	*	*	*	*	*	10	30
PAFZZ	4810-109-3830	VALVE, SOLENOID: BYPASS LINE 0158 (93781)		EA	1	*	1	1	*	1	1	14	12	10	31
XBOZZ		BRACKET: VALVE MTG 13214E3377 (97403)		EA	1									10	32
MBFZZ		TUBE, COPPER: VALVE TO TEE, 3/8 IN. OD, .032 IN. WALL THK. MANUFACTURE FROM: TUBE, COPPER, AS REQUIRED ASTMB280-3-8 (81346)		EA	1									10	33
PAOZZ	5310-877-5797	NUT, SELF-LOCKING: VALVE MTG, NO. 10-32 THD SIZE MS21044N3 (96906)		EA	1	*	*	*	*	*	*	*	*	10	34

(1)	(2)	(3)	(4)	(5)	(6)			(7)			(8)	(9)	(10)			
SMR CODE	FEDERAL STOCK NUMBER	DESCRIPTION REF NUMBER & MFR CODE	USABLE ON CODE	UNIT OF MEAS	QTY INC IN UNIT	30-DAY DS MAINT ALLOWANCE (a) (b) (c)			30-DAY GS MAINT ALLOWANCE (a) (b) (c)			1-YR ALW PER 100 EQUIP CNTGY	DEPOT MAINT ALW PER 100 EQUIP	ILLUS-TRATION (a) (b)	FIG. ITEM NO. NO.	
PAOZZ	5340-106-0551	CLAMP, LOOP: 5/8 IN. NOM SIZE MS21104D10 (96906)		EA	1	*	*	*	*	*	*	*	*		10	35
PAOZZ	5305-989-7435	SCREW, MACHINE: VALVE MTG, NO. 10-32 THD SIZE, 5/8 IN. LG MS35207-264 (96906)		EA	1	*	*	*	*	*	*	*	*		10	36
MBFZZ		TUBE, COPPER: VALVE TO TEE, 3/8 IN. OD, .032 IN. WALL THK MANUFACTURE FROM: TUBE, COPPER, AS REQUIRED ASTMB280-3-8 (81346)		EA	1										10	37
PAFZZ	4130-106-1973	VALVE, PRESSURE REGULATOR, MODEL 104A DEVICE 70034-181 (91494)		EA	1	*	1	2	*	1	2	21	18		10	38
MBFZZ		TUBE, COPPER: TEE TO TEE, 3/8 IN. OD, .032 IN. WALL THK MANUFACTURE FROM: TUBE, COPPER, AS REQUIRED ASTMB280-3-8 (81346)		EA	1										10	39
PBFZZ	4730-263-6460	TEE: 3/8 IN. X 3/8 IN. X 3/8 IN. W4000 (41947)		EA	1	*	*	*	*	*	*	*	*		10	40
PAOZZ	5305-995-6311	SCREW, MACHINE: CLAMP MTG, NO. 10-32 THD SIZE, 2 IN. LG MS35207-271 (96906)		EA	1	*	*	*	*	*	*	*	*		10	41
XBOZZ		SPACER: CLAMP MTG, 1 5/16 IN. LG 13211E8376-2 (97403)		EA	1										10	42
PAOZZ	5340-106-0550	CLAMP, LOOP: 1/2 IN. NOM SIZE MS21104D8 (96906)		EA	1	*	*	*	*	*	*	*	*		10	43
PAOZZ	5310-045-3296	WASHER, LOCK: CLAMP MTG MS35338-43 (96906)		EA	1	*	*	*	*	*	*	*	*		10	44
MBFZZ		TUBE, COPPER: TEE TO TEE, 1/2 IN. OD, .032 IN. WALL THK MANUFACTURE FROM: TUBE, COPPER, AS REQUIRED ASTMB280-1-2 (81346)		EA	1										10	45
PBFZZ	4730-203-4922	TEE: 1/2 IN. X 1/2 IN. X 3/8 IN. W4002 (41947)		EA	1	*	*	*	*	*	*	*	*		10	46
MBFZZ		TUBE, COPPER: TEE TO TEE, 1/2 IN. OD, .032 IN. WALL THK MANUFACTURE FROM: TUBE, COPPER, AS REQUIRED ASTMB280-1-2 (81346)		EA	1										10	47
XBFZZ		ADAPTER: 1/4 IN. X 1/4 FLARE A3431 (41947)		EA	1										10	48
MBFZZ		TUBE, COPPER: ADAPTER TO TEE, 1/4 IN. OD, .030 IN. WALL THK MANUFACTURE FROM: TUBE, COPPER, AS REQUIRED ASTMB280-1-4 (81346)		EA	1										10	49
PBFZZ	4730-821-9184	TEE: 1/2 IN. X 1/2 IN. X 1/4 IN. W40350 (41947)		EA	1	*	*	*	*	*	*	*	*		10	50
PAOZZ	5305-995-6311	SCREW, MACHINE: CLAMP MTG, NO. 10-32 THD SIZE, 2 IN. LG MS35207-271 (96906)		EA	1	*	*	*	*	*	*	*	*		10	51
XBOZZ		SPACER: CLAMP MTG, 1 5/16 IN LG 13211E8376-2 (97403)		EA	1										10	52
PAOZZ	5340-106-0550	CLAMP, LOOP: 1/2 IN. NOM SIZE MS21104D8 (96906)		EA	1	*	*	*	*	*	*	*	*		10	53

(1)	(2)	(3)	(4)	(5)	(6)			(7)			(8)	(9)	(10)			
SMR CODE	FEDERAL STOCK NUMBER	DESCRIPTION REF NUMBER & MFR CODE	USABLE ON CODE	UNIT OF MEAS	QTY INC IN UNIT	30-DAY DS MAINT ALLOWANCE			30-DAY GS MAINT ALLOWANCE			1-YR ALW	DEPOT MAINT	ILLUS- TRATION	FIG. NO.	ITEM NO.
						(a)	(b)	(c)	(a)	(b)	(c)	PER 100 EQUIP CNTGY	ALW 100 EQUIP	(a)		
PAOZZ	5310-045-3296	WASHER, LOCK: CLAMP MTG MS35338-43 (96906)		EA	1	*	*	*	*	*	*	*	*		10	54
XBOZZ		TAPE, ADHESIVE: INSULATION WRAPPING MLT22085TYPE1 (81349)		RL	V										10	55
XBOZZ		FOAM, PLASTIC: TUBING INSULATION, 1/2 IN. ID, 1/2 IN. WALL THK MILP15280FORMT (81349)		FT	V										10	56
MBFZZ		TUBE, COPPER: TEE TO TEE, 1/2 IN. OD, .032 IN. WALL THK MANUFACTURE FROM: TUBE, COPPER, AS REQUIRED ASTMB280-1-2 (81346)		EA	1										10	57
PBFZZ	4730-821-9184	TEE: 1/2 IN. X 1/2 IN. X 1/4 IN. W40350 (41947)		EA	1	*	*	*	*	*	*	*	*		10	58
MBFZZ		TUBE, COPPER: TEE TO VALVE BULB CRADLE, 1/2 IN. OD, .032 IN. WALL THK MANUFACTURE FROM: TUBE, COPPER, AS REQUIRED ASTMB280-1-2 (81346)		EA	1										10	59
PAOZZ		TAPE, INSULATION: VALVE BULB SEAL PT1 (87698)		RL	V	*	*	*	*	*	*	*	*		10	60
MBFZZ		TUBE, COPPER: EXPANSION VALVE BULB CRADLE 3/4 IN. OD, .035 IN. WALL THK MANUFACTURE FROM: TUBE, COPPER, AS REQUIRED ASTMB280-3-4 (81346)		EA	1										10	61
MBFZZ		TUBE, COPPER: VALVE BULB CRADLE TO COMPRESSOR, 1/2 IN. OD, .032 IN. WALL MANUFACTURE FROM: TUBE, COPPER, AS REQUIRED ASTMB280-1-2 (81346)		EA	1										10	62
PAOZZ	5310-877-5797	NUT, SELF-LOCKING: CLAMP MTG, NO. 10-32 THD SIZE MS21044N3 (96906)		EA	2	*	*	*	*	*	*	*	*		10	63
XBOZZ		SPACER: CLAMP MTG, 1/2 IN. LG 13211E8376-1 (97403)		EA	2										10	64
PAOZZ	5340-105-8328	CLAMP, LOOP: 3/8 IN. NOM SIZE MS21104D6 (96906)		EA	2	*	*	*	*	*	*	*	*		10	65
PAOZZ	5305-995-3442	SCREW, MACHINE: CLAMP MTG, NO. 10-32 THD SIZE, 1 1/4 IN. LG MS35207-268 (96906)		EA	2	*	*	*	*	*	*	*	*		10	66
PAOZZ	5305-995-3441	SCREW, MACHINE: CLAMP MTG, NO. 10-32 THD SIZE, 1 1/2 IN. LG MS35207-269 (96906)		EA	1	*	*	*	*	*	*	*	*		10	67
XBOZZ		SPACER: CLAMP MTG, 7/8 IN. LG 13214E3372-2 (97403)		EA	1										10	68
PAOZZ	5340-105-8328	CLAMP, LOOP: 3/8 IN, NOM SIZE MS21104D6 (96906)		EA	1	*	*	*	*	*	*	*	*		10	69
PAOZZ	5310-045-3296	WASHER, LOCK: CLAMP MTG MS35338-43 (96906)		EA	1	*	*	*	*	*	*	*	*		10	70
MBFZZ		TUBE, COPPER: COMPRESSOR TO TEE, 3/8 IN. OD, .032 IN. WALL THK MANUFACTURE FROM: TUBE, COPPER, AS REQUIRED ASTMB280-3-8 (81346)		EA	1										10	71

(1)	(2)	(3)	(4)	(5)	(6)			(7)			(8)	(9)	(10)			
SMR CODE	FEDERAL STOCK NUMBER	DESCRIPTION REF NUMBER & MFR CODE	USABLE ON CODE	UNIT OF MEAS	QTY INC IN	30-DAY DS MAINT ALLOWANCE (a) (b) (c)			30-DAY GS MAINT ALLOWANCE (a) (b) (c)			1-YR ALW PER EQUIP CNTGY	DEPOT MAINT ALW PER EQUIP	ILLUS-TRATION (a) (b)	FIG. ITEM NO. NO.	
GROUP 11 - HIGH AND LOW PRESSURE SWITCHES AND ENCLOSURE																
PAOZZ	5305-984-4992	SCREW, MACHINE: ENCLOSURE MTG, NO. 6-32 THD SIZE, 3/4 IN. LG MS35206-232 (96906)		EA	4	*	*	*	*	*	*	*	*	*	11	1
XBOZZ		PLATE, INSTRUCTION: PRESSURE SWITCH 13216E9520-1 (97403)		EA	1										11	2
XBOZZ		GASKET: PRESSURE SWITCH ENCLOSURE 13216E9519-1 (97403)		EA	1										11	3
PAOZZ	5305-984-4984	SCREW, MACHINE: SWITCH MTG, NO. 6-32 THD SIZE, 5/16 IN. LG MS35206-227 (96906)		EA	4	*	*	*	*	*	*	*	*	*	11	4
PAOZZ	5310-045-4007	WASHER, LOCK: SWITCH MTG MS35338-41 (96906)		EA	4	*	*	*	*	*	*	*	*	*	11	5
PAOZZ	5325-263-6632	GROMMET: PRESSURE SWITCH ENCLOSURE MS35490-6 (96906)		EA	1	*	*	*	*	*	*	*	*	*	11	6
XBOZZ		ENCLOSURE: PRESSURE SWITCH 13214E3578-1 (97403)		EA	1										11	7
MFOFF		LEAD, ELECTRICAL MANUFACTURE FROM: WIRE, ELECTRICAL, AS REQUIRED MS5086-1-16-9 (81349) TERMINAL LUG, 2 EA MS35036-153 (96906)		EA	1										11	8
PAFZZ		SWITCH, HIGH PRESSURE 210AP40AN2301 (92578)		EA	1	*	1	1	*	1	1	14	12		11	9
PAFZZ	5930-275-7800	SWITCH, LOW PRESSURE 210AP10AN2301 (92578)		EA	1	*	1	1	*	1	1	14	12		11	10
GROUP 12 - COMPRESSOR ASSEMBLY																
PAOZZ	5310-984-3806	NUT, SELF-LOCKING: COMPRESSOR MTG, 5/16-18 THD SIZE MS51922-9 (96906)		EA	4	*	*	*	*	*	*	*	*	*	12	1
PAOZZ	5310-167-0767	WASHER, FLAT: COMPRESSOR MTG AN970-5 (88044)		EA	4	*	*	*	*	*	*	*	*	*	12	2
PAFFF	4130-750-6654	COMPRESSOR ASSEMBLY WHP622H9-115-1 (01479)		EA	1	*	1	1	*	1	1	14	12		12	3
PAFZZ		PRECOOLER, COMPRESSOR 475132 (01479)		EA	1	*	*	*	*	*	*	*	*	*	12	4
PAFZZ		STRAINER, SUCTION 475828 (01479)		EA	1	*	*	*	*	*	*	*	*	*	12	5
PAOZZ	5935-754-5638	CONNECTOR, ELECTRICAL: COMPRESSOR POWER INPUT MS3102R20-15P (96906)		EA	1	*	*	*	*	*	*	*	*	*	12	6
XBOZZ		BUSHING: COMPRESSOR MTG 13214E3659 (97403)		EA	4										12	7
PAOZZ	5310-401-3365	WASHER: COMPRESSOR MTG 13211E8170 (97403)		EA	8	*	*	*	*	*	*	*	*	*	12	8
PAOZZ		WASHER: COMPRESSOR MTG 13214E3476 (97403)		EA	4	*	*	*	*	*	*	*	*	*	12	9
PAOZZ	5305-235-4727	SCREW, SHOULDER: COMPRESSOR MTG 13211E8166 (97403)		EA	4	*	*	*	*	*	*	*	*	*	12	10

(1)	(2)	(3)	(4)	(5)	(6)			(7)			(8)	(9)	(10)		
SMR	FEDERAL	DESCRIPTION	USABLE	UNIT	30-DAY DS MAINT ALLOWANCE			30-DAY GS MAINT ALLOWANCE			1-YR	DEPOT	ILLUS-TRATION		
CODE	STOCK	REF NUMBER & MFR CODE	ON	OF	QTY	(a)	(b)	(c)	(a)	(b)	(c)	ALW	MAINT	(a)	(b)
	NUMBER		CODE	MEAS	INC	1-20	21-50	51-100	1-20	21-50	51-100	PER	ALW	FIG.	ITEM
					IN							EQUIP	100	NO.	NO.
					UNIT							CNTGY	EQUIP		
GROUP 13 - ACCESSORY ITEMS															
PAOZZ		CONNECTOR, ELECTRICAL: AIR CONDITIONER POWER INPUT MS3106R20-4SX (96906)		EA	1	*	*	*	*	*	*	*	*	13	1
PAOZZ	5305-984-6194	SCREW, MACHINE: COVER MTG, NO. 8-32 THD SIZE, 5/8 IN. LG MS35206-246 (96906)		EA	8	*	*	*	*	*	*	*	*	13	2
PAOZZ	5310-821-2366	WASHER, FLAT: COVER MTG 13214E3469 (97403)		EA	8	*	*	*	*	*	*	*	*	13	3
PAOZZ	5305-984-6194	SCREW, MACHINE: COVER MTG, NO. 8-32 THD SIZE, 5/8 IN. LG MS35206-246 (96906)		EA	4	*	*	*	*	*	*	*	*	13	4
PAOZZ		WASHER ASSEMBLY: COVER MTG R655-71C110 (97450)		EA	4	*	*	*	*	*	*	*	*	13	5
PAOZZ	5305-993-1849	SCREW, MACHINE: COVER MTG, NO. 10-32 THD SIZE, 3/4 IN. LG MS35207-265 (96906)		EA	4	*	*	*	*	*	*	*	*	13	6
PAOZZ	5310-821-2366	WASHER, FLAT: COVER MTG 13214E3469 (97403)		EA	4	*	*	*	*	*	*	*	*	13	7
PAOZZ		FASTENER, TURNBUTON: COVER MTG, NO. 8-32 THD SIZE XX78326-20 (83058)		EA	2	*	*	*	*	*	*	*	*	13	8
XBOZZ		COVER, CANVAS 13214E3703 (97403)		EA	1									13	9

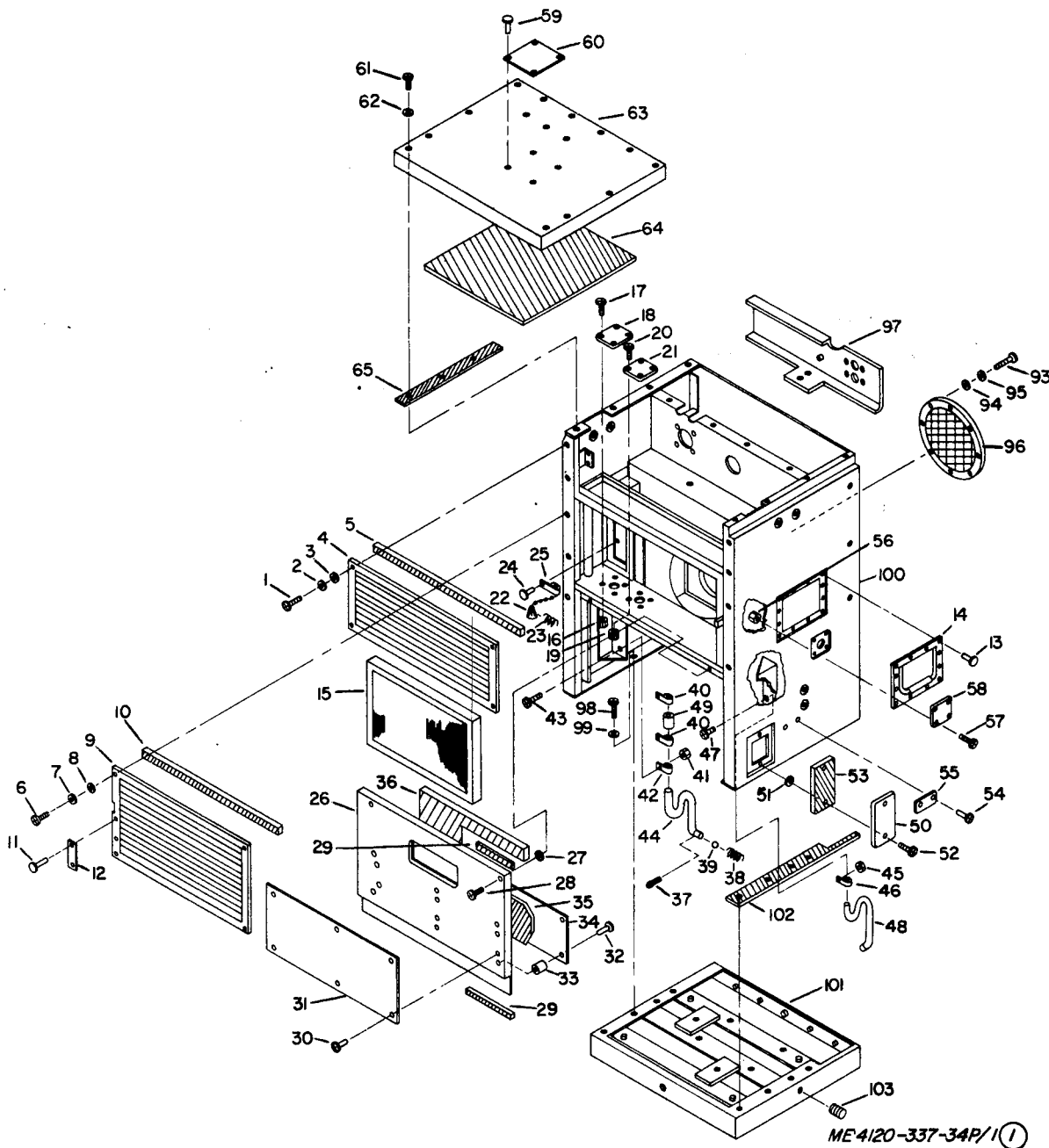
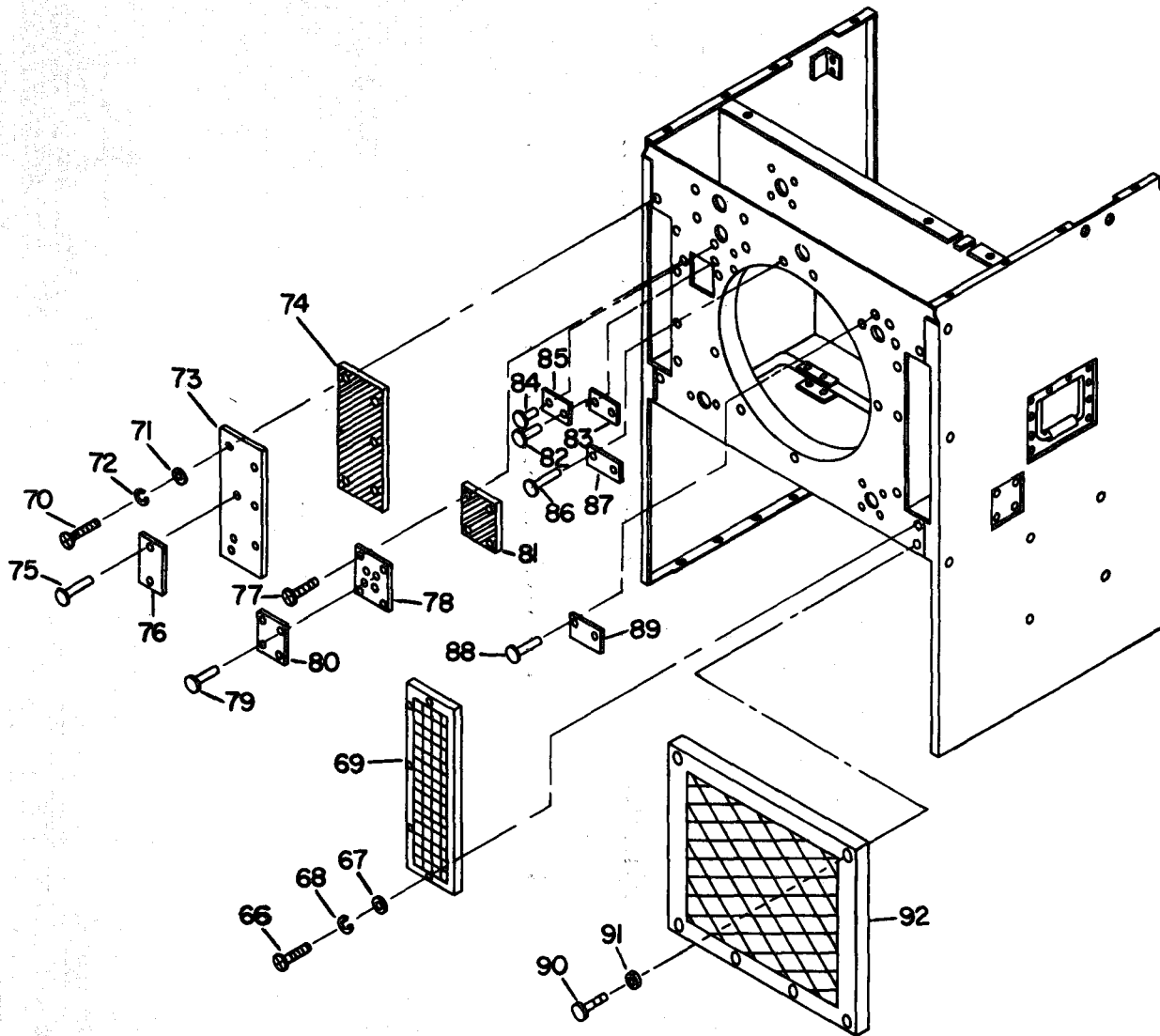


Figure 1. Casing, guards, grilles, drain tubes, panels and filter. (sheet 1 of 2)



ME4120-337-34P/1 (2)

Figure 1 Casing, guards, grills, drain tubes, panels and filter.(sheet 2 of 2)

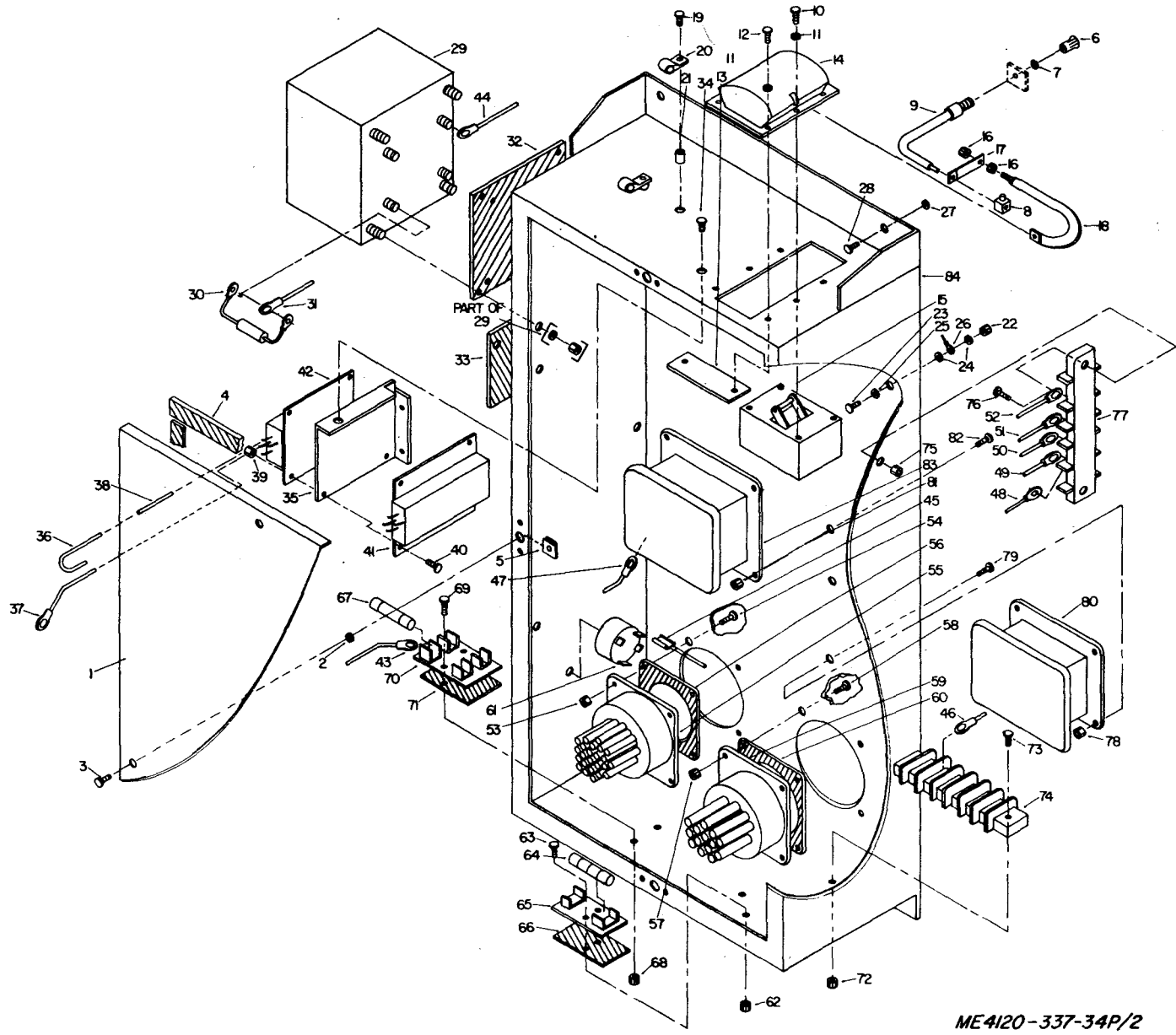
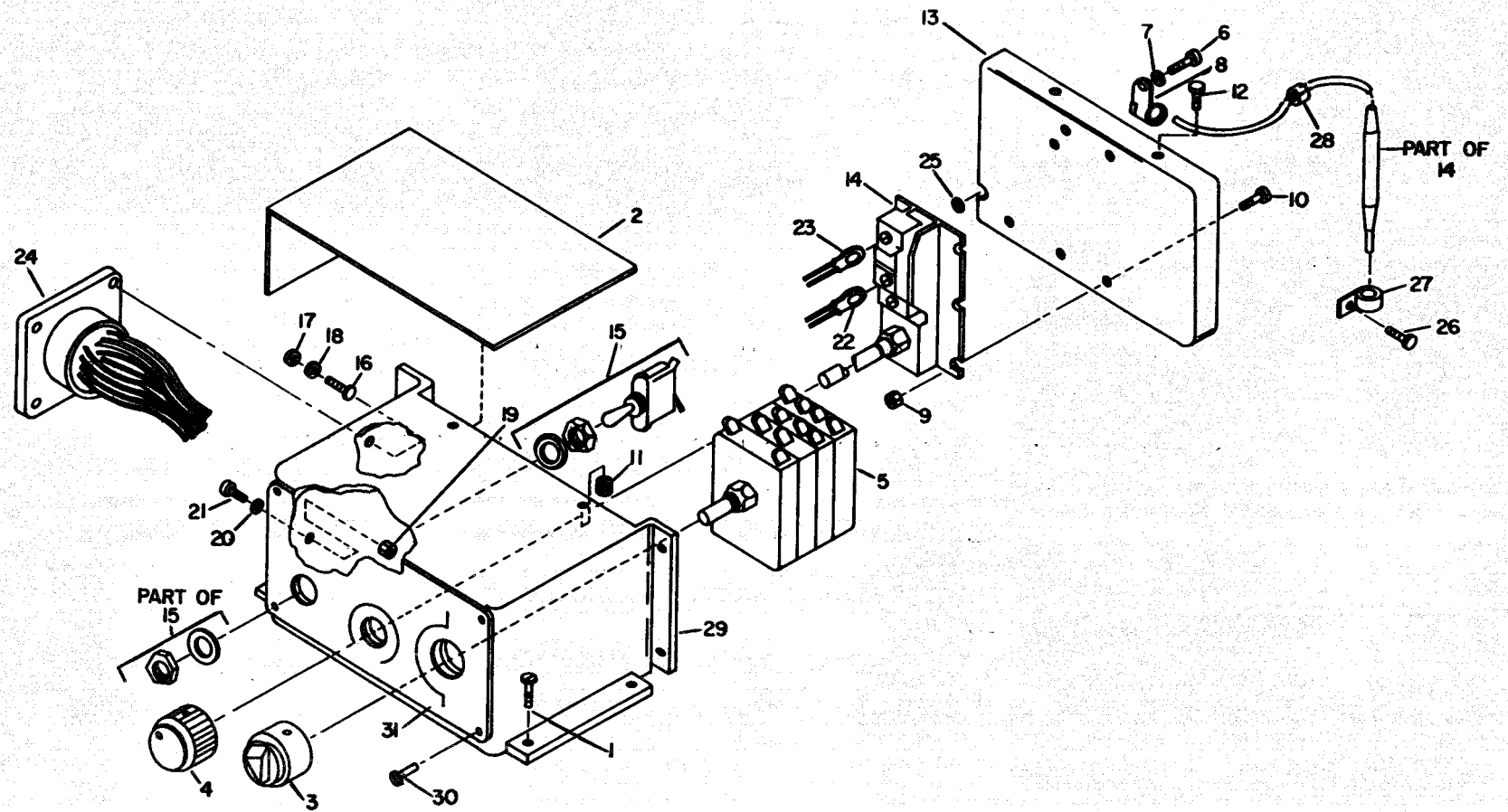


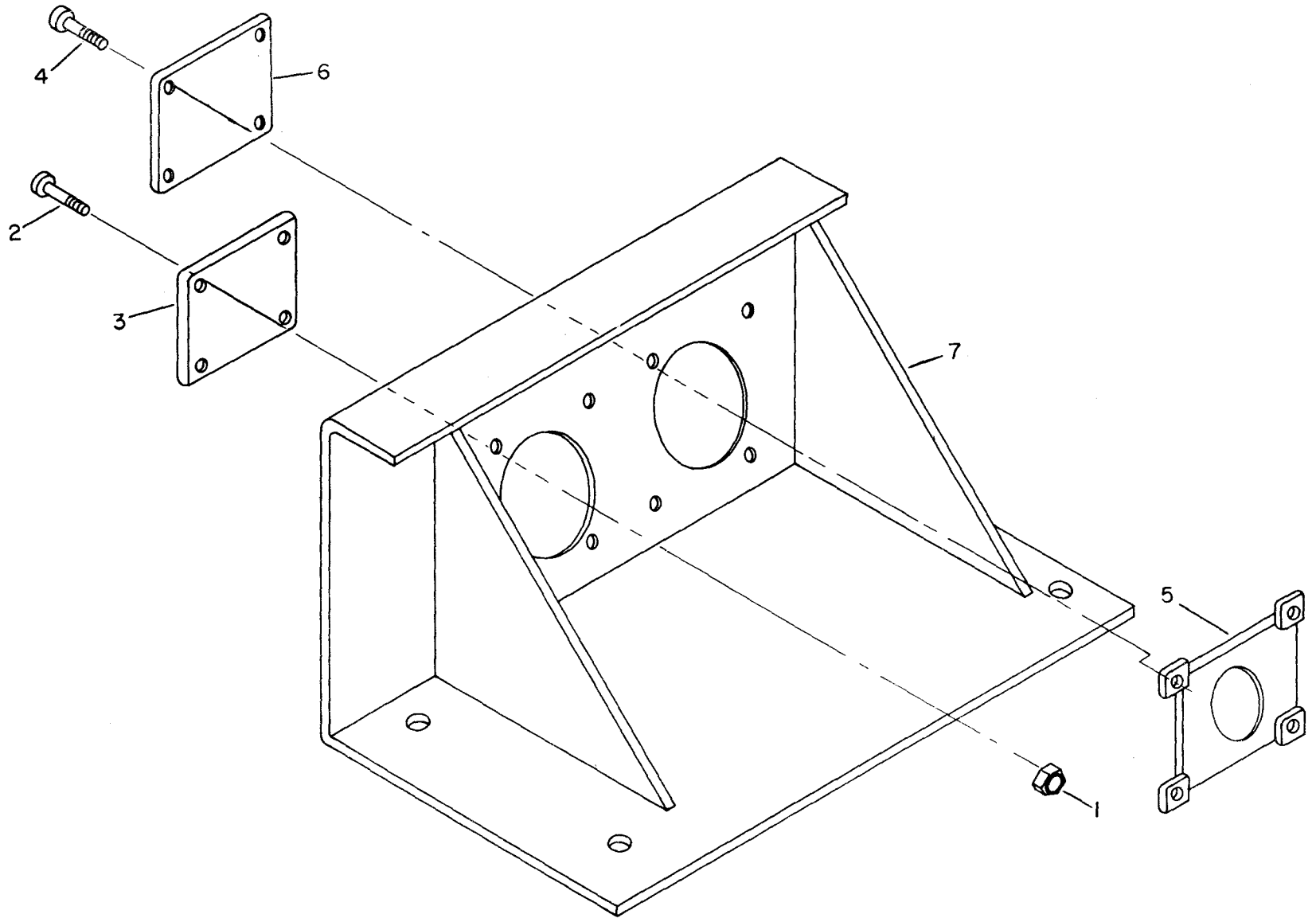
Figure 2. Junction box assembly.

ME4120-337-34P/2



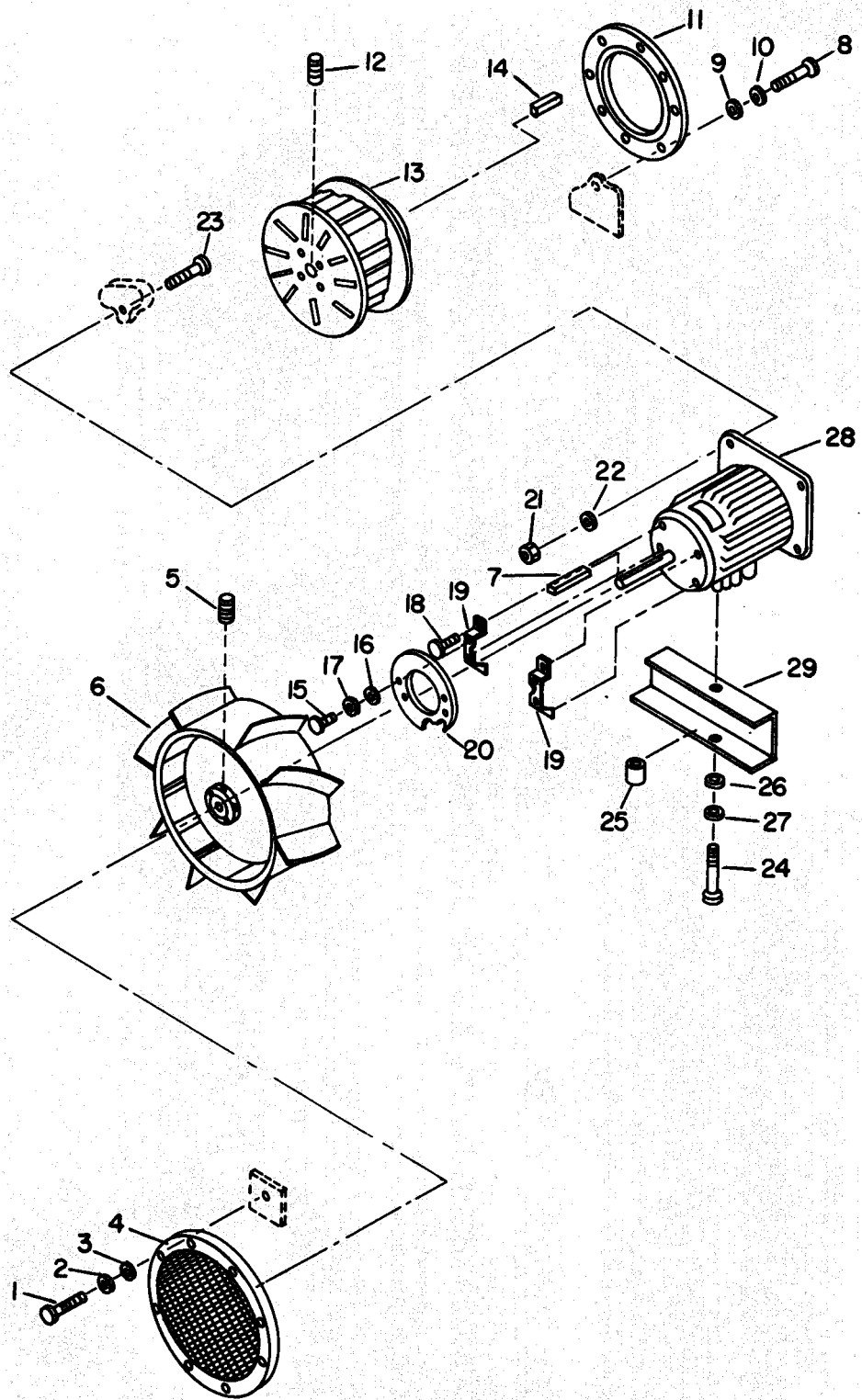
ME 4120-337-34P/3

Figure 3. Control panel assembly.

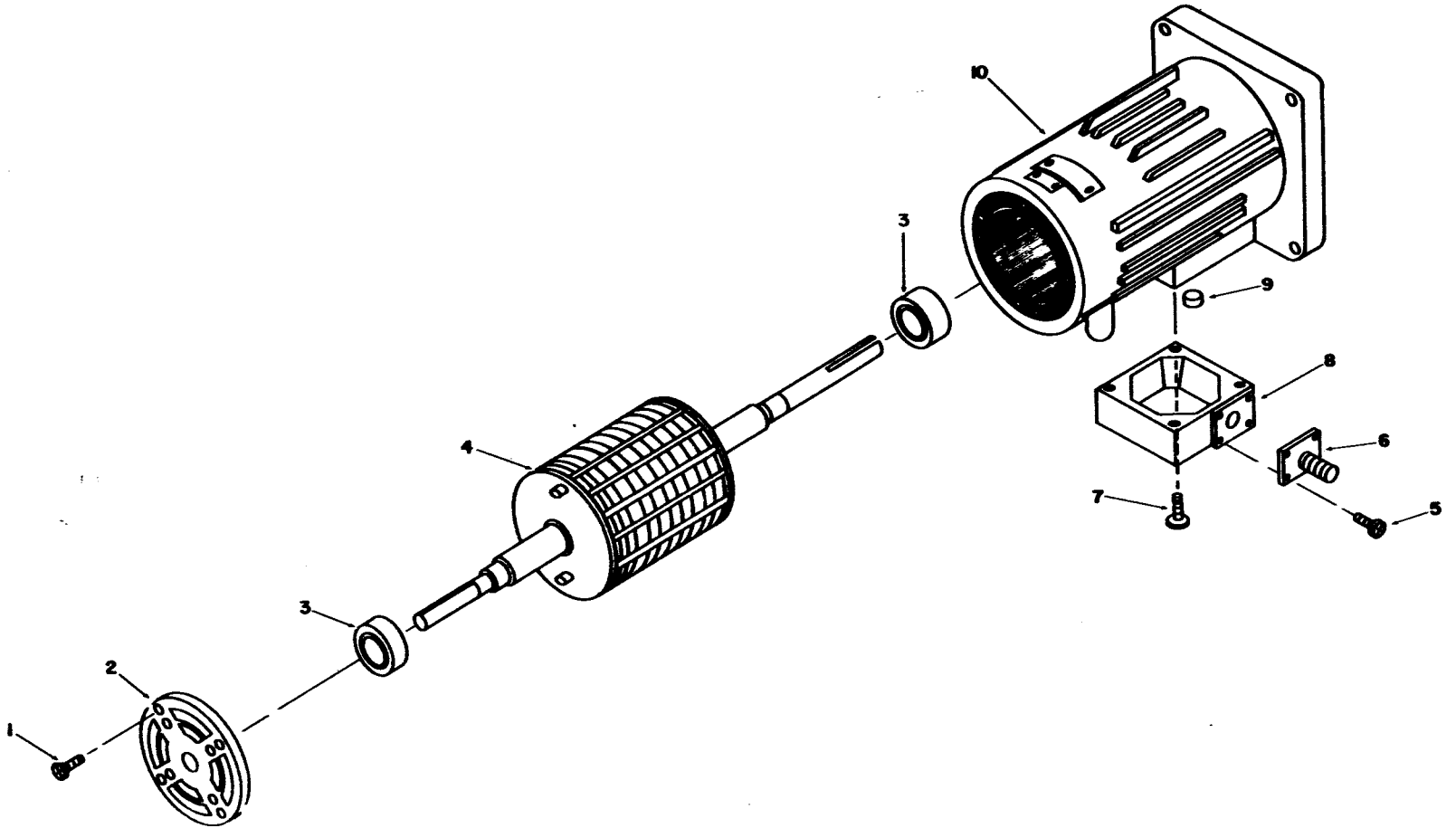


ME4120-337-34P/4

Figure 4. Block-off panel assembly.

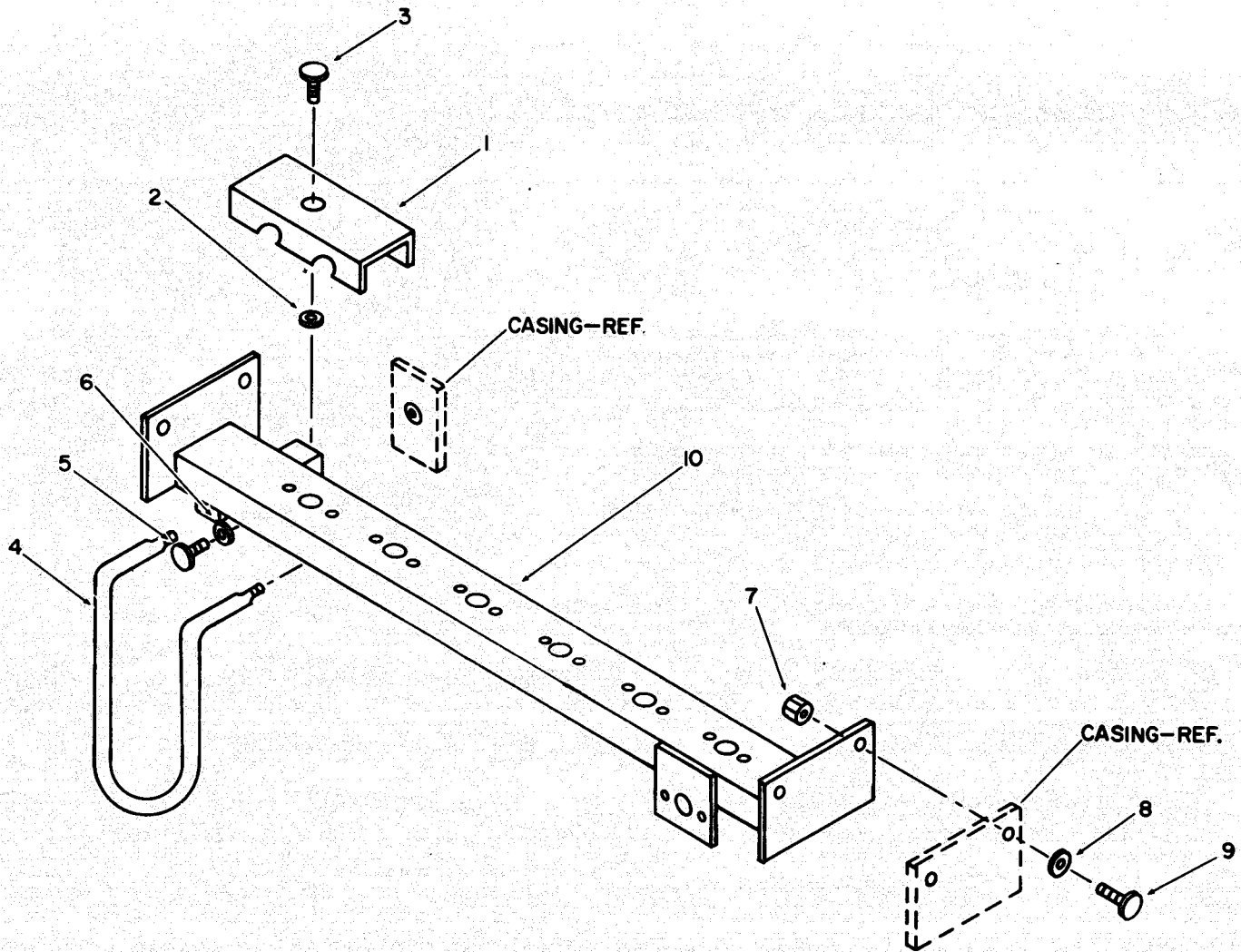


ME4120-337-34P/5
 Figure 5. Fan assembly.



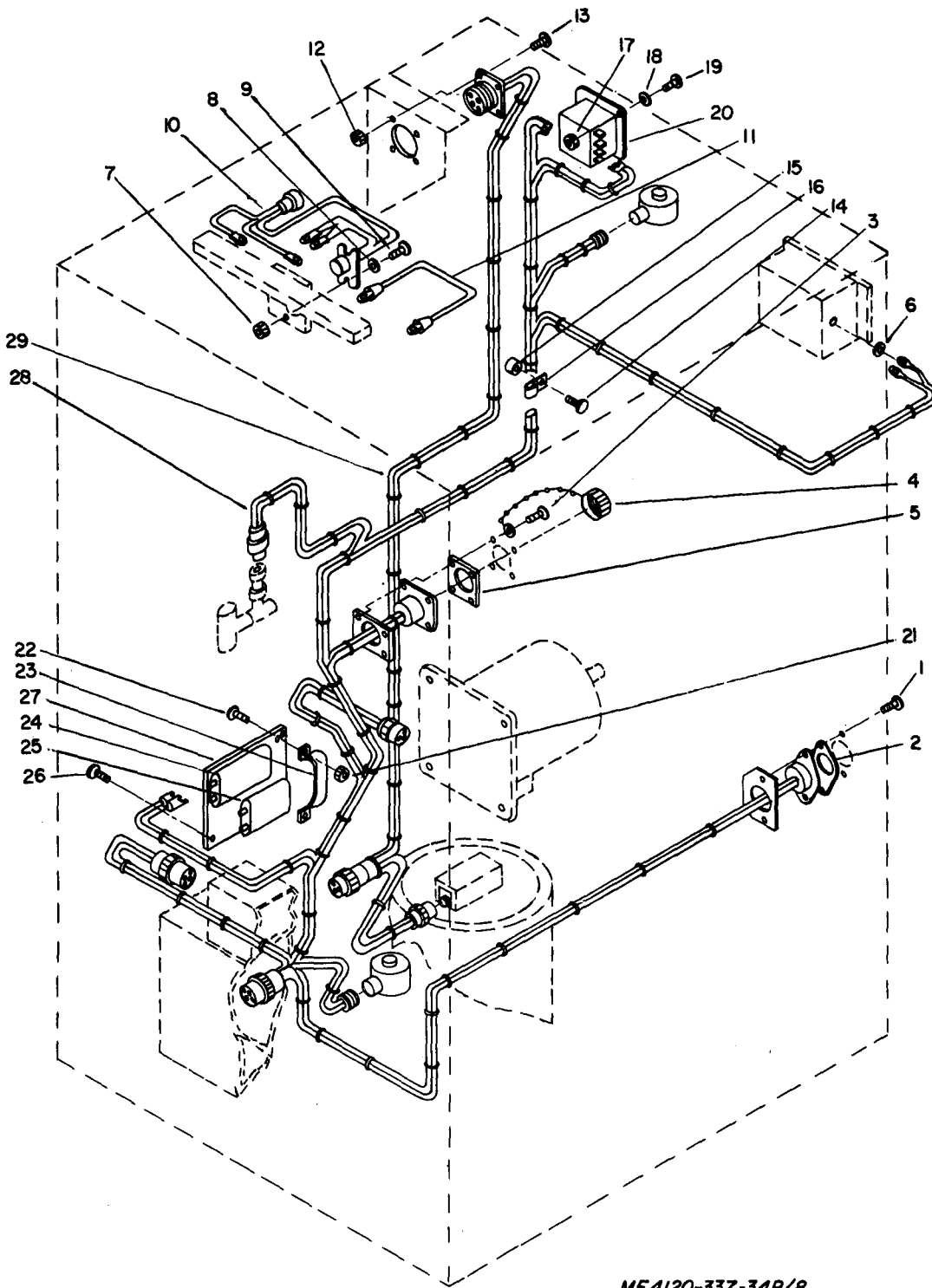
ME 4120-337-34P/6

Figure 6. Motor assembly.



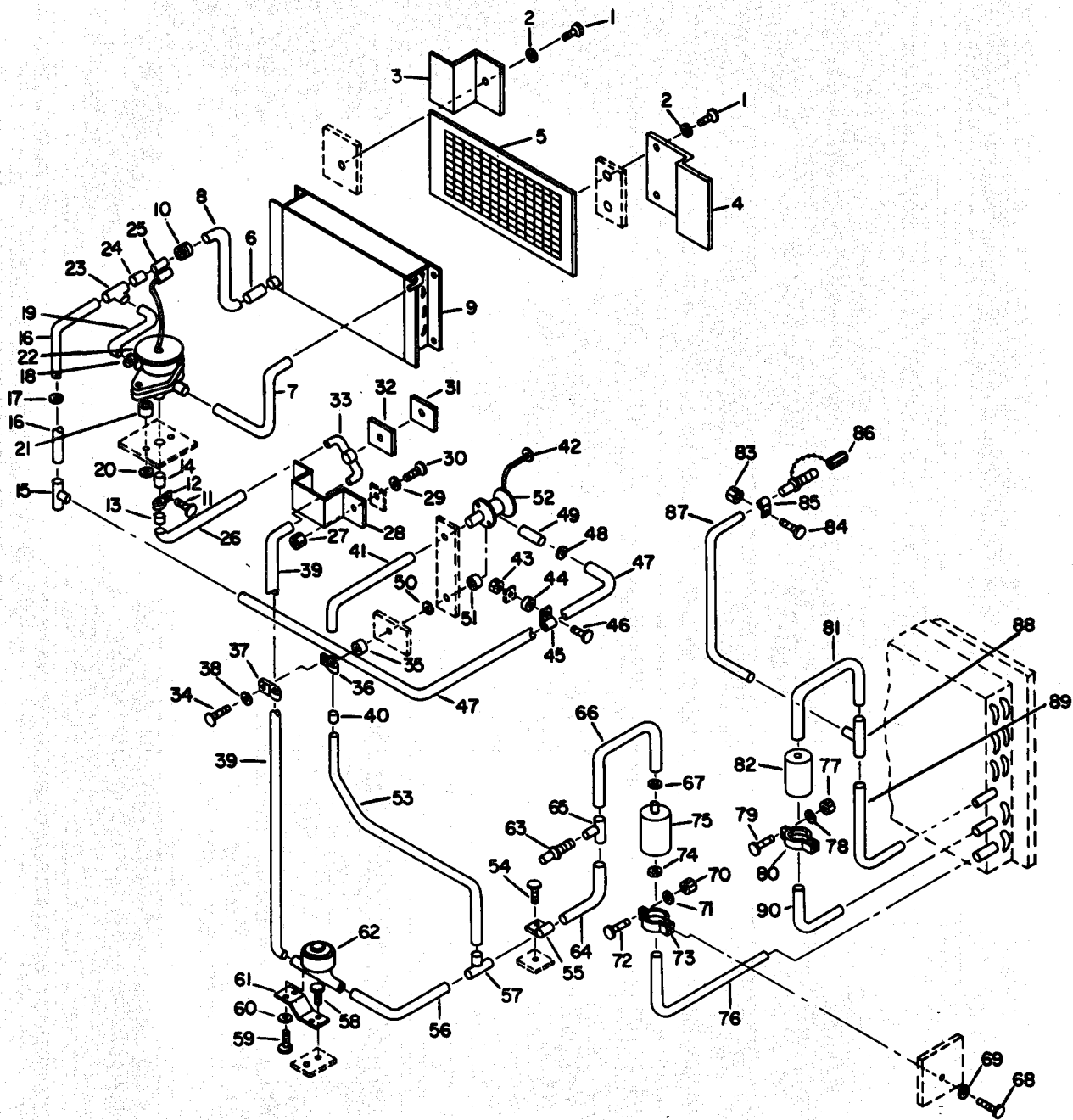
ME 4120-337-34P/7

Figure 7. Heater assembly.



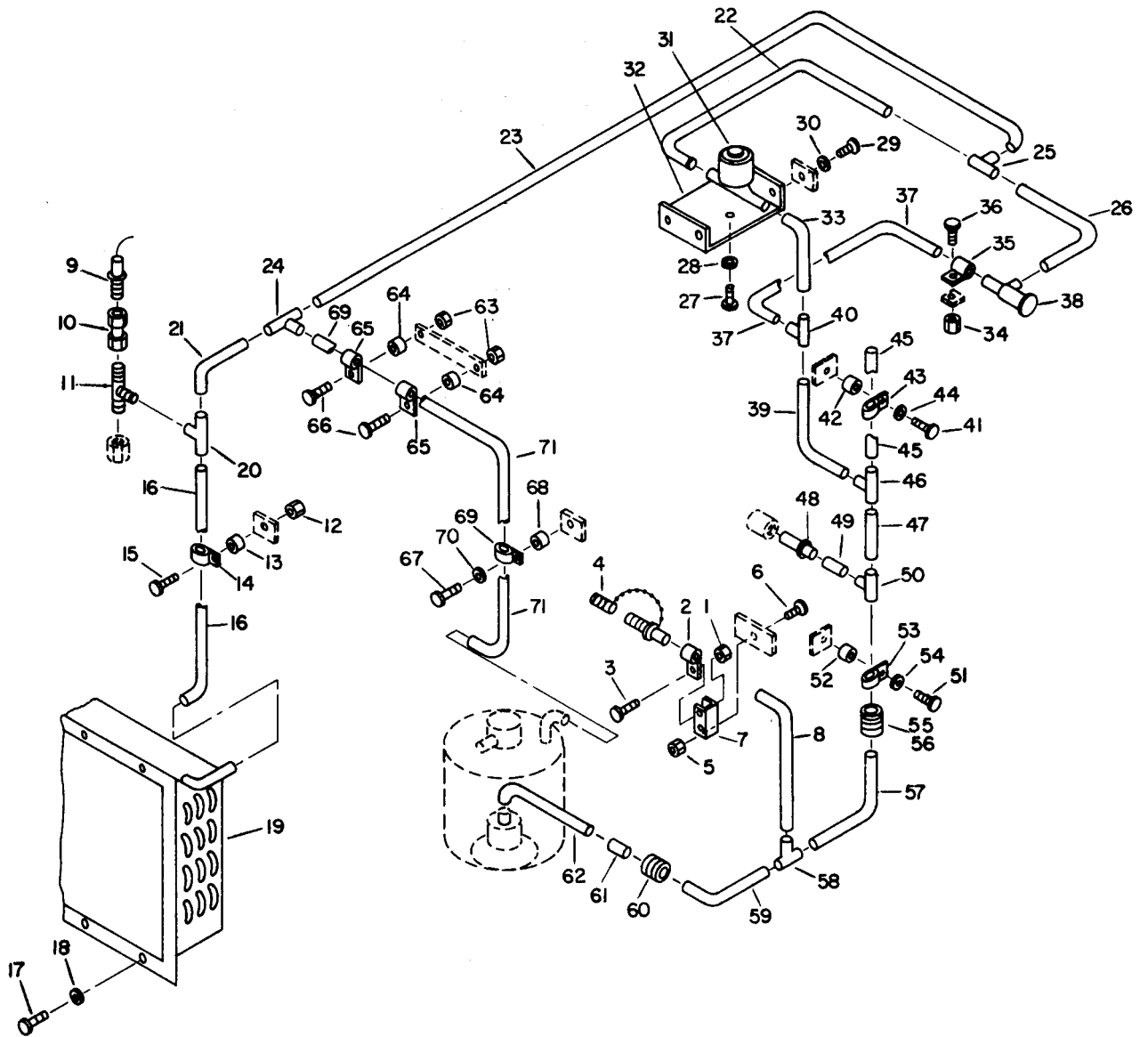
ME 4120-337-34P/8

Figure 8. Wiring harnesses and clamps.



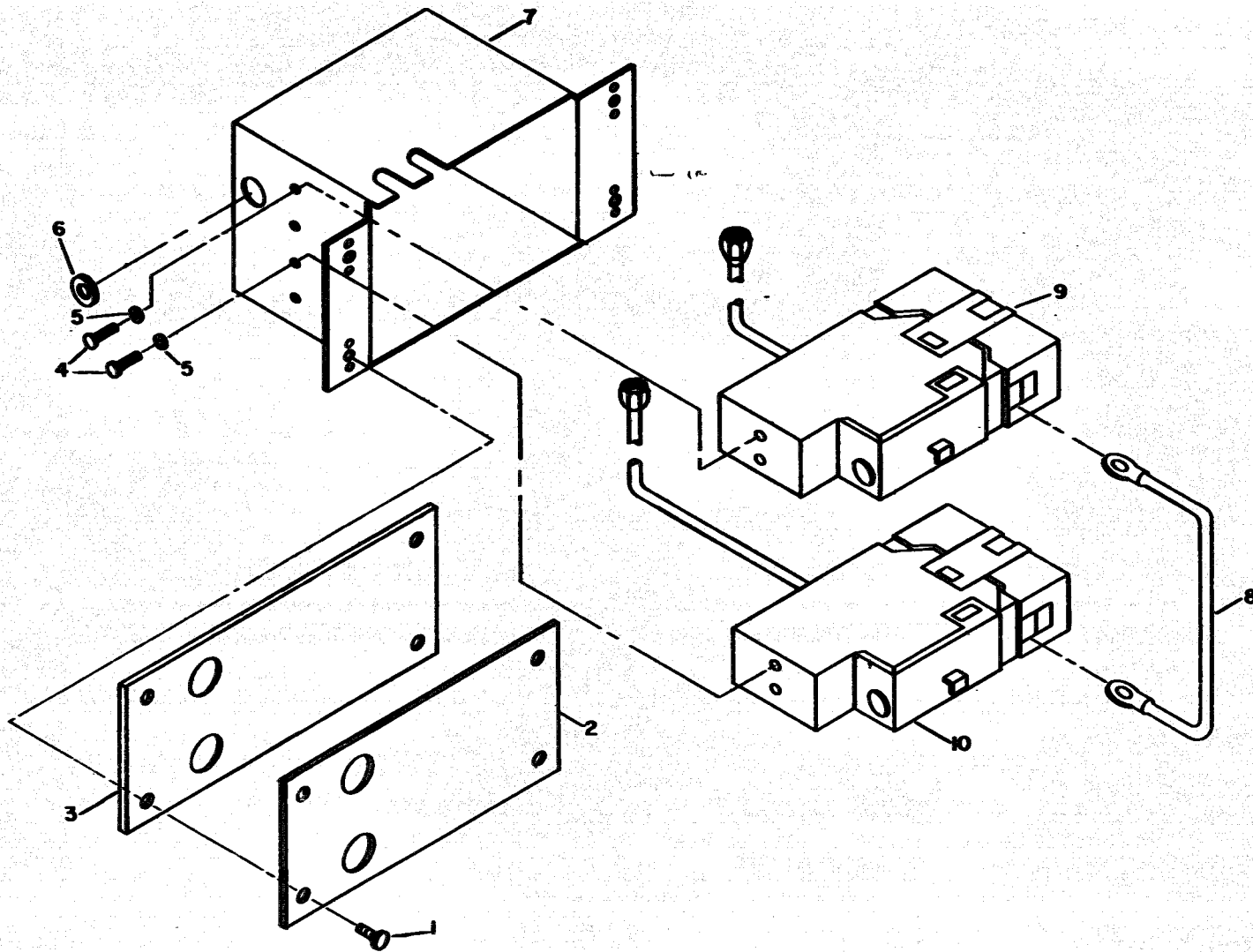
ME4120-337-34P/9

Figure 9. Mist eliminator, evaporator and condenser coils, valves, dehydrator, receiver, sight glass and piping.



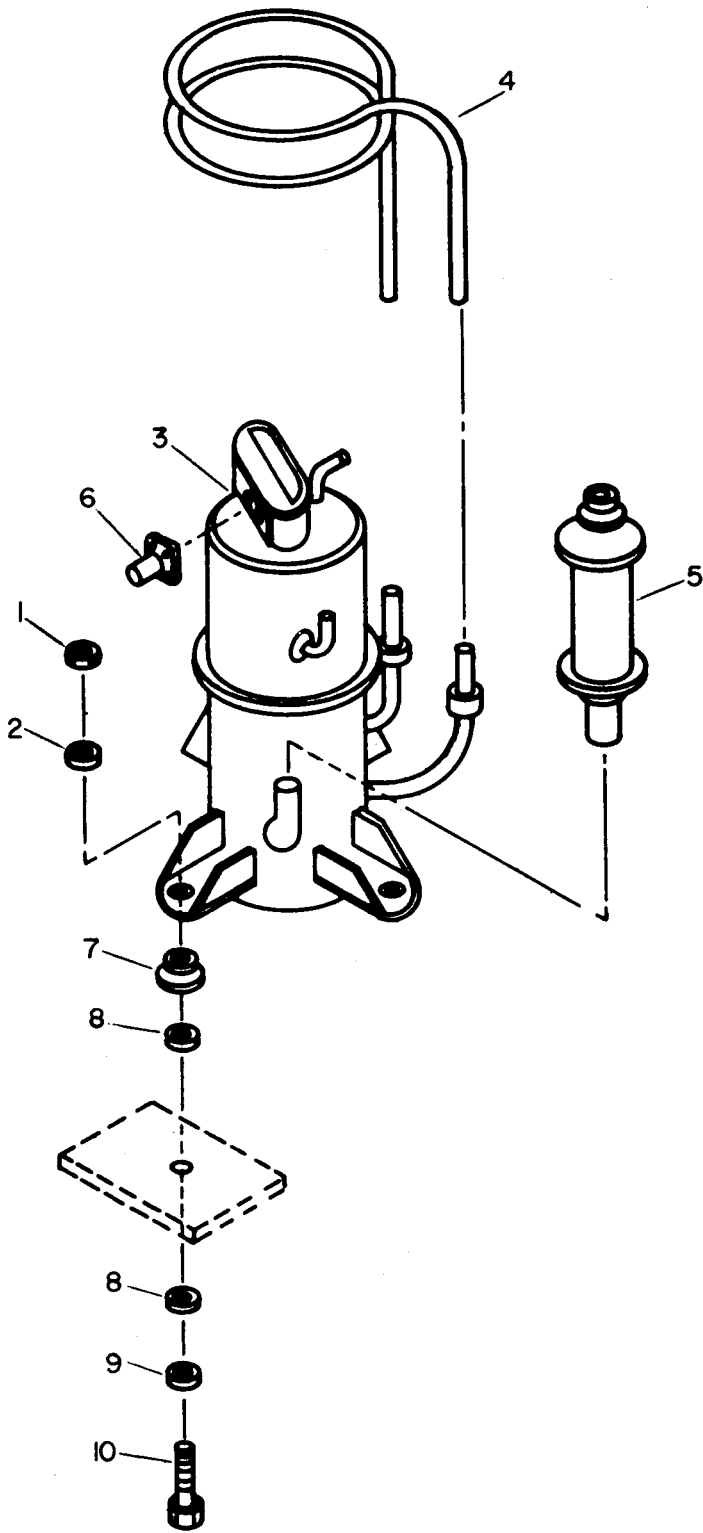
ME 4120-337-34P/10

Figure 10. Valves, pressure switches and piping.



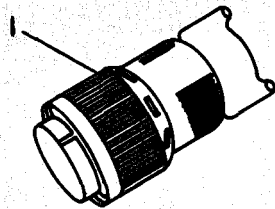
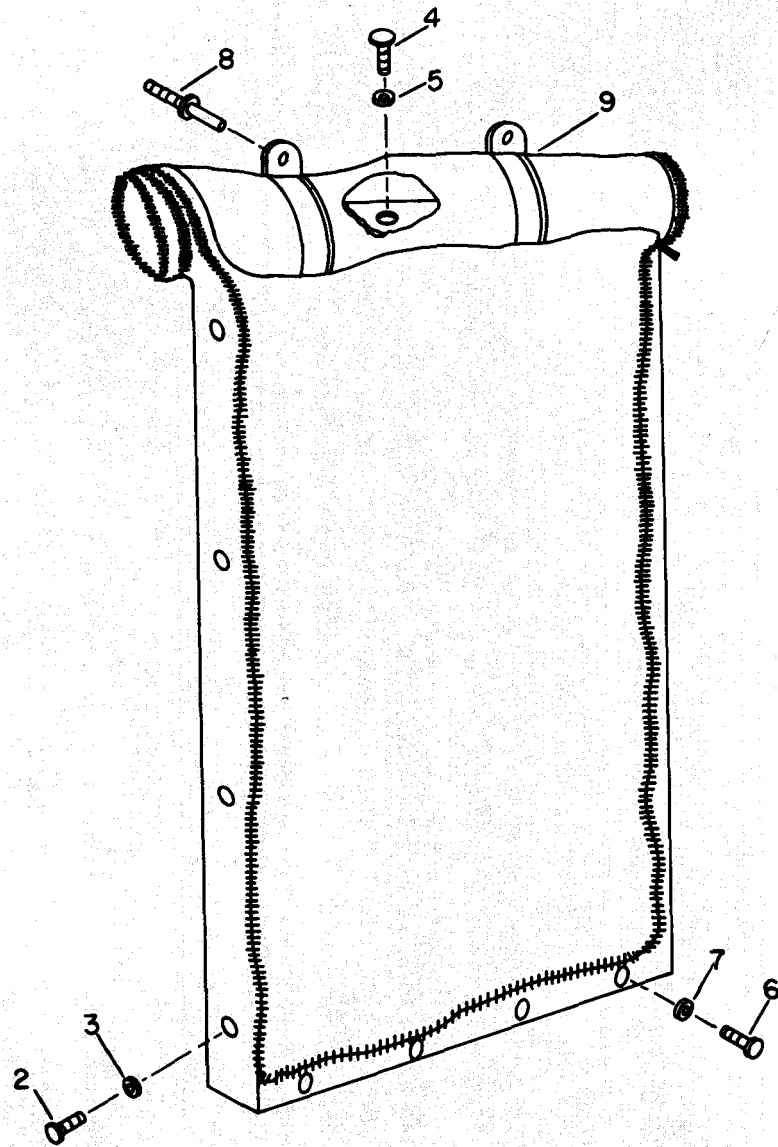
ME 4120-337-34P/11

Figure 11. High and low pressure switches and enclosure.



ME4120-337-34P/12

Figure 12. Compressor assembly.



ME 4120-337-34P/13

Figure 13. Accessory items.

Section IV. INDEX-FEDERAL STOCK NUMBER AND REFERENCE NUMBER
 CROSS-REFERENCE TO FIGURE AND ITEM NUMBER

STOCK NUMBER	FIGURE NO	ITEM NO	STOCK NUMBER	FIGURE NO	ITEM NO
3110-554-3459	6	3	5305-984-6195	1	6
4130-071-3940	9	75		1	66
4130-073-8404	9	33		1	93
4130-073-8405	9	63		2	58
4130-106-1971	6	9		5	1
4130-106-1973	10	38		8	1
4130-106-5662	2	55	5305-984-6196	2	19
4130-901-0323	1	15	5305-984-6197	1	70
4130-902-1482	10	19	5305-984-6222	8	19
4540-110-9660	7	4	5305-989-7434	3	6
4730-079-0267	9	57		9	84
	9	88		10	3
	10	25		10	6
4730-143-8933	9	65	5305-989-7435	2	79
4730-189-2737	9	18		2	82
4730-189-2739	9	67		3	21
	9	74		7	9
4730-203-4922	10	46		9	54
4730-263-6460	10	24		10	36
	10	40	5305-993-1849	1	90
4730-264-9151	9	40		10	17
4730-264-9153	9	13		13	6
4730-489-9656	10	11	5305-993-1851	3	1
4730-529-4017	9	6		9	46
4730-769-3961	10	10	5305-995-3441	10	67
4730-821-9184	9	15	5305-995-3442	8	14
	9	23		9	34
	10	50		10	15
	10	58		10	66
4730-908-31994	1	40	5305-995-3444	2	23
4730-926-9649	10	20		2	76
4810-109-3830	9	62	5305-995-6311	10	41
	10	31		10	51
4820-107-0992	9	52	5310-014-5850	2	24
4820-112-0047	9	22		3	17
5305-053-1114	4	4		3	20
	8	3	5310-045-3296	2	25
5305-059-4553	2	63		3	7
	2	69		3	18
5305-063-3503	1	47		9	38
5305-068-0505	1	98		10	44
5305-088-9044	3	16		10	54
5305-163-8349	7	3		10	70
5305-269-3212	5	23	5310-045-3299	1	2
5305-235-4727	12	10		1	7
5305-621-5305	2	28		1	68
5305-857-5867	7	5		1	72
	9	1		1	95
5305-889-2999	1	20		5	2
	1	57		5	10
5305-889-3001	2	73		5	17
	4	2		9	60
5305-929-6558	5	5		10	28
	5	12	5310-045-4007	11	5
5305-984-4976	8	13	5310-060-2039	1	41
5305-984-4983	2	10		1	45
5305-984-4984	11	4		8	7
5305-984-4988	2	12	5310-061-7326	3	19
5305-984-4989	2	40	5310-080-6004	5	22
	10	27	5310-081-4219	5	26
5305-984-4992	1	17	5310-081-8087	1	16
	2	54		2	39
	11	1		2	53
5305-984-6193	2	34		2	62
	3	10		2	68
	3	12		2	72
	9	59		4	1
	10	29		8	17
5305-984-6194	1	43	5310-082-1404	8	18
	1	61	5310-087-4652	5	21
	1	77	5310-088-0551	1	19
	3	26		1	56
	5	8		8	12
	5	15	5310-167-0767	12	2
	8	9	5310-275-6813	2	5
	8	22	5310-401-3365	12	8
	8	26	5310-407-9566	5	27
	9	11	5310-530-9963	1	51
	9	30	5310-596-7691	2	7
	9	58	5310-637-9541	9	20
	13	2		9	50
	13	4	5310-809-4058	1	99
5305-984-6195	1	1	5310-809-8544	5	9

Section IV. INDEX-FEDERAL STOCK NUMBER AND REFERENCE NUMBER
 CROSS-REFERENCE TO FIGURE AND ITEM NUMBER

STOCK NUMBER	FIGURE NO	ITEM NO	STOCK NUMBER	FIGURE NO	ITEM NO	
5310-809-8544	5	16	5920-243-9331	2	64	
	8	8	5920-939-5442	2	67	
	9	29	5930-275-7800	11	10	
	10	30	5930-683-1628	3	15	
5310-809-8546	7	6	5930-907-8948	3	5	
	9	2	5930-923-4176	3	14	
5310-811-3494	2	57	5935-754-5638	12	6	
	8	21	5935-821-0345	6	6	
	9	27	5945-007-7668	2	42	
5310-821-2366	1	3	5945-007-7669	2	41	
	1	8	5945-106-7100	8	20	
	1	67	5945-549-6348	2	80	
	1	71		2	83	
	1	91	5950-111-4720	2	29	
	1	94	5961-106-5259	2	61	
	5	3	6105-103-4514	5	28	
	10	18	6105-103-4514	6		
	13	3				
	13	7				
5310-877-5797	2	22				
	2	75				
	2	78				
	2	81				
	7	7				
	9	43				
	9	83				
	10	1				
	10	5				
	10	12				
	10	34				
	10	63				
	10	27				
	10	2				
5310-880-9344	2	2				
	2	27				
	7	2				
	7	2				
5310-889-2549	3	9				
	3	11				
5310-984-3806	12	1				
5315-234-1856	1	37				
5315-730-4564	5	14				
5315-730-4570	5	7				
5320-874-4471	1	32				
5320-882-8388	1	13				
5320-932-1972	1	24				
	1	30				
	1	54				
	1	59				
	1	75				
	1	79				
	1	82				
	1	84				
	1	86				
	1	88				
	3	30				
	5325-954-3832	1	52			
	5330-119-7503	7	8			
	5340-020-0383	8	16			
	5340-103-2976	3	8			
	5340-105-8328	3	27			
		9	12			
9		37				
9		55				
10		14				
10		65				
10		69				
9		36				
9		45				
9		85				
10		2				
5340-106-0549	9	36				
	9	45				
5340-106-0550	9	85				
	10	2				
	10	43				
5340-106-0551	10	53				
	1	42				
5340-247-6226	1	46				
	10	35				
	2	20				
5325-263-6632	8	6				
5325-263-6632	9	48				
	11	6				
5325-286-6047	9	42				
	3	25				
5355-579-2896	3	3				
	2	67				
5355-472-9354	3	4				

Section IV. INDEX-FEDERAL STOCK NUMBER AND REFERENCE NUMBER
CROSS-REFERENCE TO FIGURE AND ITEM NUMBER

REFERENCE NUMBER	MFR CODE	FIG NO	ITEM NO	REFERENCE NUMBER	MFR CODE	FIG NO	ITEM NO
AA6061T5	80204	1	33	MILI14511	81349	1	64
AD42H	07707	1	24	MILI23053-2CLI	81349	2	30
	07707	1	30		81349	2	38
	07707	1	54		81349	2	55
	07707	1	59		81349	2	59
	07707	1	75		81349	3	24
	07707	1	79		81349	8	10
	07707	1	82		81349	8	28
	07707	1	84	MIP15280FORMT	81349	10	56
	07707	1	86	MILT22085TYPE1	81349	10	55
	07707	1	88	MILT43435SIZE3TYPE	81349	3	24
	07707	3	30		81349	8	28
AD43H	07707	1	13		81349	8	29
AD45H	07707	1	32	MS20066-143	96906	5	14
AN970-5	88044	12	2	MS20066-145	96906	5	7
APGH11R1799-5	81541	2	15	MS20426AD4-5-5	96906	1	11
ASTMB280-1-2	81346	9	8	MS21044D08	96906	1	41
	81346	9	16		96906	1	45
	81346	9	24		96906	8	7
	81346	10	45	MS21044N04	96906	1	19
	81346	10	47		96906	1	56
	81346	10	57		96906	8	12
	81346	10	59	MS21044N06	96906	1	16
	81346	10	62		96906	2	39
ASTMB280-1-4	81346	9	19		96906	2	53
	81346	9	41		96906	2	62
	81346	9	47		96906	2	68
	81346	9	53		96906	2	72
	81346	9	87		96906	4	1
	81346	10	8		96906	8	17
	81346	10	26	MS21044N08	96906	2	57
	81346	10	49		96906	8	21
ASTMB280-3-4	81346	9	25		96906	9	27
	81346	10	61	MS21044N3	96906	2	22
ASTMB280-3-8	81346	9	7		96906	2	75
	81346	9	14		96906	2	78
	81346	9	26		96906	2	81
	81346	9	38		96906	7	7
	81346	9	56		96906	9	43
	81346	9	64		96906	9	83
	81346	9	66		96906	10	1
	81346	9	76		96906	10	5
	81346	9	81		96906	10	12
	81346	9	89		96906	10	34
	81346	10	90	MS21045-08	96906	3	9
	81346	10	16		96906	3	11
	81346	10	21	MS21045-3	96906	3	19
	81346	10	22	MS21083N3	96906	2	16
	81346	10	23	MS21104D10	96906	1	42
	81346	10	33		96906	1	46
	81346	10	37	MS21104D3	96906	2	20
	81346	10	39	MS21104D4	96906	9	36
ASTMD1056SBE42CF2	81346	1	5		96906	9	45
	81346	1	10		96906	9	85
	81346	1	29		96906	10	2
	81346	1	53	MS21104D6	96906	3	27
	81346	1	65		96906	9	12
	81346	1	74		96906	9	37
	81346	1	81		96906	9	55
	81346	1	102		96906	10	14
	81346	2	4		96906	10	65
	81346	2	33		96906	10	69
A13563	41947	10	10	MS21104D8	96906	10	43
A19AGF10	92578	3	14		96906	10	53
A3431	41947	10	48	MS21104D9	96906	8	16
A37693	41625	2	8	MS21919H6	96906	3	8
A4859	41947	10	11	MS24192D1	96906	2	80
A5051	41947	9	18		96906	2	83
A5052	41947	9	67	MS24523-22	96906	3	15
	41947	9	74	MS24586C48	96906	1	23
B43310-1	41625	2	6	MS24632-11	96906	4	4
B48701X22-00	41625	2	9		96906	8	3
C083	78462	9	75	MS24665-155	96906	1	37
C13853-1420	78553	2	5	MS24693S50	96906	1	47
C6974-20-41	78553	4	5	MS25036-101	96906	2	30
C6974-20-41	78553	8	28	MS25036-106	96906	2	31
DB92100	49367	8	28		96906	2	44
F09A250V2A	81349	2	64		96906	2	46
H561L5-2RG	98003	1	14		96906	2	55
KAW5	71400	2	67		96906	2	59
MILI14511	81349	1	35		96906	3	23
	81349	1	36		96906	3	24

Section IV. INDEX-FEDERAL STOCK NUMBER AND REFERENCE NUMBER
CROSS-REFERENCE TO FIGURE AND ITEM NUMBER

REFERENCE NUMBER	MFR CODE	FIG NO	ITEM NO	REFERENCE NUMBER	MFR CODE	FIG NO	ITEM NO
MS25036-108	96906	2	47	MS35206-246	96906	1	43
	96906	2	48		96906	1	61
	96906	2	55		96906	1	77
	96906	2	59		96906	3	26
	96906	3	24		96906	5	8
	96906	8	10		96906	5	15
	96906	8	11		96906	8	9
MS25036-112	96906	2	26		96906	8	22
	96906	2	59	MS35206-246	96906	8	26
MS25036-153	96906	2	37		96906	9	11
	96906	2	43		96906	9	30
	96906	2	44		96906	9	58
	96906	2	45		96906	13	2
	96906	2	48		96906	13	4
	96906	2	49	MS35206-247	96906	1	1
	96906	2	51		96906	1	6
	96906	2	52		96906	1	66
	96906	2	55		96906	1	93
	96906	2	59		96906	2	58
	96906	3	22		96906	5	1
	96906	3	23		96906	8	1
	96906	3	24	MS35206-248	96906	2	19
	96906	8	28	MS35206-249	96906	1	70
	96906	11	8	MS35207-260	96906	3	16
MS35036-156	96906	2	50	MS35207-263	96906	3	6
	96906	2	59		96906	9	84
MS25036-157	96906	2	26		96906	10	3
MS25043-20D	96906	8	4		96906	10	6
MS25251-12	96906	8	28	MS35207-264	96906	2	79
MS25251-16	96906	8	28		96906	2	82
	96906	8	29		96906	3	21
MS25165-1	96906	3	3		96906	7	9
MS27183-10	96906	1	99		96906	9	54
MS27183-12	96906	5	26		96906	10	36
MS27183-14	96906	5	22	MS35207-265	96906	1	90
MS27183-42	96906	2	24		96906	10	17
	96906	3	17		96906	13	6
	96906	3	20	MS35208-266	96906	2	23
MS27183-6	96906	8	18		96906	2	76
MS27183-7	96906	5	9	MS35207-267	96906	3	1
	96906	5	16		96906	9	46
	96906	8	8	MS35207-268	96906	8	14
	96906	9	29		96906	9	34
	96906	10	30		96906	10	15
MS27183-8	96906	7	6		96906	10	66
	96906	9	2	MS35207-269	96906	10	67
MS3100R16-10P	96906	8	10	MS35207-271	96906	10	41
MS3100R20-4PX	96906	8	28		96906	10	51
MS3100R28-17S	96906	8	28	MS35207-280	96906	9	68
MS3102R14S6P	96906	6	6	MS35207-285	96906	9	72
MS3102R20-15P	96906	12	6	MS35207-287	96906	9	79
MS3102R28-9S	96906	2	55	MS35333-37	96906	2	11
MS3102R32-7P	96906	2	59	MS35335-32	96906	2	7
MS3106R14S6S	96906	8	28	MS35338-41	96906	11	5
MS3106R16-10S	96906	8	29	MS35338-42	96906	1	2
MS3106R20-4SX	96906	13	1		96906	1	7
MS2106R20-15S	96906	8	29		96906	1	68
MS3106R28-9P	96906	8	29		96906	1	72
MS3106R32-7S	96906	8	28		96906	1	95
MS35190-238	96906	2	63		96906	5	2
	96906	2	69		96906	5	10
MS35191-268	96906	5	18		96906	5	17
MS35206-217	96906	1	20		96906	9	60
	96906	1	57		96906	10	28
MS35206-219	96906	8	13	MS35338-43	96906	2	25
MS35206-226	96906	2	10		96906	3	7
MS35206-227	96906	11	4		96906	3	18
MS35206-228	96906	2	12		96906	9	38
MS35206-229	96906	2	40		96906	10	44
	96906	2	73		96906	10	54
MS35206-231	96906	2	73		96906	10	70
	96906	4	2	MS35338-44	96906	9	69
MS35206-232	96906	1	17		96906	9	71
	96906	2	54		96906	9	78
	96906	11	1	MS35338-45	96906	5	27
MS35206-235	96906	8	19	MS35338-46	96906	9	20
MS35206-245	96906	2	34		96906	9	50
	96906	3	10	MS35490-1	96906	3	25
	96906	3	12		96906	9	42
	96906	9	59	MS35490-14	96906	9	17
	96906	10	29	MS35490-6	96906	8	6

Section IV. INDEX-FEDERAL STOCK NUMBER AND REFERENCE NUMBER
CROSS-REFERENCE TO FIGURE AND ITEM NUMBER

REFERENCE NUMBER	MFR CODE	FIG NO	ITEM NO	REFERENCE NUMBER	MFR CODE	FIG NO	ITEM NO	
MS35490-6	96906	9	48	W40324	41947	9	15	
	96906	11	6		41947	9	88	
MS35650-3252	96906	9	70	W40350	41947	10	25	
	96906	9	77		41947	9	15	
MS35842-11	96906	1	40		41947	9	23	
MS51007-10	96906	2	56		41947	10	58	
MS51007-12	96906	2	60	W4229	41947	9	65	
MS51007-7	96906	8	5	W4230	40947	10	20	
MS51021-62	96906	5	5	XX78326-20	83058	13	8	
	96906	5	12	006-10245	74193	2	14	
MS51922-17	96906	5	21	01-005248-084	64731	6	3	
MS51922-9	96906	12	1	01-008773-020	64731	6	9	
MS90725-39	96906	5	24	02-009089-000	64731	6	8	
MS90725-61	96906	5	23	02-009264-003	64730	6	7	
MS90726-5	96906	1	98	02-009264-004	64731	6	5	
MS9122-03	96906	7	5	02-009264-005	64731	6	1	
	96906	9	1	02-009350-000	64731	6	2	
MS91528-1C4B	96906	3	4	02-010542-001	64731	6	10	
MTS004	04009	8	20	02-010542-002	64731	6	4	
MWA1256	82647	8	10	1000	75543	3	28	
M5086-1-12-9	81349	2	50	104ADEVICE70034-181	91494	10	38	
	81349	2	59	12S1-14-1AA	71286	1	52	
	81349	8	28	12-11014-12	94222	1	27	
M5086-1-14-9	81349	2	47		94222	2	2	
	81349	2	51		94222	2	27	
	81349	2	52		94222	7	2	
	81349	2	55	12-11-203-11	94222	2	28	
M5086-1-16-9	81349	8	29	12-11-303-11	94222	2	3	
	81349	2	31	12-11-613-11	94222	7	3	
	81349	2	36	12-11-713-11	94222	1	28	
	81349	2	37	13211E8166	97403	12	10	
	81349	2	43	13211E8170	97403	12	8	
	81349	2	44	13211E8178	97403	1	103	
	81349	2	45	13211E8215	97403	1	89	
	81349	2	46	13211E8242	97403	9	32	
	81349	2	48	13211E8255	97403	9	31	
	81349	2	49	13211E8273	97403	8	2	
	81349	2	59	13211E8288	97403	3	22	
	81349	3	22		97403	3	24	
	81349	3	23	13211E8305	97403	1	22	
	81349	3	24	13211E8322	97403	1	25	
	81349	8	10	13211E8323	97403	1	49	
	81349	8	11	13211E8369	97403	9	63	
M5086-2-10-9	81349	8	28	13211E8376-1	97403	8	15	
	81349	8	29		97403	9	35	
	81349	11	8		97403	9	44	
	81349	2	26		97403	10	13	
	80205	7	8		97403	10	64	
	NAS1523C3F 0158	93781	8	28	13211E8376-2	97403	10	42
		93781	9	62	13211E8376-2	97403	10	52
		93781	10	31	13211E8376-3	97403	9	21
	PT1	87698	9	10		97403	9	51
		87698	10	60	13211E8376-5	97403	2	21
R655-71C105	97450	8	28	13211E8399C28-17P	97403	3	24	
R655-71C110	97450	1	62	13211E8411	97403	1	39	
	97450	13	5	13211E8412	97403	1	38	
R655-71C117	97450	2	30	13214E3372-2	97403	10	68	
R655-71C118	97450	2	30	13214E3377	97403	10	32	
R655-71C122-1	97450	9	73	13214E3384	97403	1	63	
R655-71C122-2	97450	9	80	13214E3386	97403	1	101	
R655-71C140-2	97450	9	5	13214E3412	97403	2	1	
R655-71C142-2	97450	2	18	13214E3416	97403	7	1	
R655-71C143	97450	2	17	13214E3419	97403	9	28	
R661-71C139	97450	9	3	13214E3457-1	97403	8	10	
R661-71C141	97450	9	4	13214E3462	97403	3	24	
R661-72C107	97450	10	7	13214E3469	97403	1	3	
R661-72C108	97450	1	44		97403	1	8	
R661-72C112	97450	1	60		97403	1	67	
R661-72D113	97450	5	13		97403	1	71	
R661-72D115	97450	9	9		97403	1	91	
SAK13	78462	9	33		97403	1	94	
SS0329	58849	2	61		97403	5	3	
TCLE106HW120-10A	70255	9	22		97403	10	18	
TCL25C15AXB1019C	70255	9	52		97403	13	3	
VUS3-46AC	07295	9	86		97403	13	7	
	07295	10	4	13214E3471-1	97403	1	21	
WHP622H9-115-1	01479	12	3		97403	1	58	
W1003	41947	9	40		97403	4	6	
W1009	41947	9	13	13214E3471-2	97403	1	18	
W1019	41947	9	6		97403	4	3	
W1706	41947	9	49	13214E3476	97403	12	9	
W4000	41947	10	24	13214E3484	97403	1	48	
W4000	41947	10	40	13214E3427	97403	8	27	
W4002	41947	10	46	13214E3529-2	97403	8	24	

Section IV. INDEX-FEDERAL STOCK NUMBER AND REFERENCE NUMBER
CROSS-REFERENCE TO FIGURE AND ITEM NUMBER

REFERENCE NUMBER	MFR CODE	FIG NO	ITEM NO	REFERENCE	MFR ICODE	FIG NO	ITEM NO
13214E3429-5	97403	8	25	699JJ6F	75382	2	74
13214E3531	97403	8	23	8912K216	15605	3	5
13214E3533	97403	1	92	909018	82866	1	15
13214E3547	97403	5	11				
13214E3578-1	97403	11	7				
13214E3592-1	97403	9	61				
13214E3612	97403	1	96				
	97403	5	4				
13214E3615	97403	1	73				
13214E3616	97403	1	69				
13214E3622	97403	1	97				
13214E3623	97403	5	20				
13214E3625	97403	5	29				
13214E3627	97403	5	19				
13214E3629-1	97403	7	10				
13214E3635	97403	1	100				
13214E3659	97403	12	7				
13214E3662	97403	1	80				
13214E3665	97403	4					
13214E3685-2	97403	2	32				
13214E3689	97403	4	7				
13214E3694	97403	5	6				
13214E3698-1	97403	7	4				
13214E3703	97403	13	9				
13214E3704-1	97403	1	4				
13214E3706-1	97403	1	9				
13214E3708	97403	10	19				
13214E3723	97403	8	29				
13214E3724	97403	2	55				
13214E3726	97403	2	71				
13214E3728-8	97403	6					
13214E3762	97403	3	2				
13214E3798-2	97403	9	82				
13214E3814	97403	2	66				
13215E9828	97403	2	13				
13216E6182-2	97403	2	42				
13216E6182-3	97403	2	41				
13216E6191-2	97403	2	31				
	97403	2	45				
	97403	2	47				
	97403	2	51				
	97403	8	29				
13216E6191-3	97403	2	50				
13216E6192	97403	2	43				
	97403	2	59				
13216E9515	97403	8	28				
13216E9519-1	97403	11	3				
13216E9520-1	97403	11	2				
13217E2344	97403	1	12				
13217E5636	97403	5	25				
13217E6814	97403	1	76				
032187074	97403	1	83				
13218E7075	97403	1	85				
13218E7076	97403	1	50				
13218E7077	97403	1	55				
13218E7078	97403	1	87				
13218E7079-2	97403	1	31				
13218E7489	97403	1	78				
13218E9884	97403	1	34				
13218E9887-2	97403	2					
13218E9894	97403	8	28				
13218E9896	97403	2	59				
13218E9897	97403	2	35				
13218E9908-3	97403	3					
13218E9909	97403	3	29				
13218E9911	97403	3	13				
13218E9912	97403	3	31				
13218E9913	97403	2	84				
13218E9949-2	97403	1	26				
210AP10AN2301	92578	11	10				
210AP40AN2301	92578	11	9				
2819	71400	2	70				
39TB8	75382	2	77				
41100	73386	2	29				
416-25	93410	8	28				
4515	71400	2	65				
4730-18	64731	5	28				
475132	1479	12	4				
475828	1479	12	5				
5S3-1	71286	1	51				
6PS306N405N285L	82647	8	28				
	82647	10	9				

TM 5-4120-337-34/P

By Order of the Secretary of the Army:

Frederick C. WEYAND
General, United States Army
Chief of Staff.

Official:

VERNE L. BOWERS
Major General, United States Army,
The Adjutant General.

Distribution:

To be distributed in accordance with DA Form 12-25C (qty rqr block no. 535), Direct/General Support requirements for Environmental Equipment, Air Conditioners, 9,000 BTU.

RECOMMENDED CHANGES TO EQUIPMENT TECHNICAL PUBLICATIONS



THEN...JOT DOWN THE DOPE ABOUT IT ON THIS FORM. CAREFULLY TEAR IT OUT, FOLD IT AND DROP IT IN THE MAIL.

SOMETHING WRONG WITH PUBLICATION

FROM: (PRINT YOUR UNIT'S COMPLETE ADDRESS)

DATE SENT

PUBLICATION NUMBER

PUBLICATION DATE

PUBLICATION TITLE

BE EXACT PIN-POINT WHERE IT IS

PAGE NO.

PARA-GRAPH

FIGURE NO.

TABLE NO.

IN THIS SPACE, TELL WHAT IS WRONG AND WHAT SHOULD BE DONE ABOUT IT.

TEAR ALONG PERFORATED LINE

PRINTED NAME, GRADE OR TITLE AND TELEPHONE NUMBER

SIGN HERE

The Metric System and Equivalents

Linear Measure

1 centimeter = 10 millimeters = .39 inch
 1 decimeter = 10 centimeters = 3.94 inches
 1 meter = 10 decimeters = 39.37 inches
 1 dekameter = 10 meters = 32.8 feet
 1 hectometer = 10 dekameters = 328.08 feet
 1 kilometer = 10 hectometers = 3,280.8 feet

Weights

1 centigram = 10 milligrams = .15 grain
 1 decigram = 10 centigrams = 1.54 grains
 1 gram = 10 decigrams = .035 ounce
 1 dekagram = 10 grams = .35 ounce
 1 hectogram = 10 dekagrams = 3.52 ounces
 1 kilogram = 10 hectograms = 2.2 pounds
 1 quintal = 100 kilograms = 220.46 pounds
 1 metric ton = 10 quintals = 1.1 short tons

Liquid Measure

1 centiliter = 10 milliliters = .34 fl. ounce
 1 deciliter = 10 centiliters = 3.38 fl. ounces
 1 liter = 10 deciliters = 33.81 fl. ounces
 1 dekaliter = 10 liters = 2.64 gallons
 1 hectoliter = 10 dekaliters = 26.42 gallons
 1 kiloliter = 10 hectoliters = 264.18 gallons

Square Measure

1 sq. centimeter = 100 sq. millimeters = .155 sq. inch
 1 sq. decimeter = 100 sq. centimeters = 15.5 sq. inches
 1 sq. meter (centare) = 100 sq. decimeters = 10.76 sq. feet
 1 sq. dekameter (are) = 100 sq. meters = 1,076.4 sq. feet
 1 sq. hectometer (hectare) = 100 sq. dekameters = 2.47 acres
 1 sq. kilometer = 100 sq. hectometers = .386 sq. mile

Cubic Measure

1 cu. centimeter = 1000 cu. millimeters = .06 cu. inch
 1 cu. decimeter = 1000 cu. centimeters = 61.02 cu. inches
 1 cu. meter = 1000 cu. decimeters = 35.31 cu. feet

Approximate Conversion Factors

To change	To	Multiply by	To change	To	Multiply by
inches	centimeters	2.540	ounce-inches	newton-meters	.007062
feet	meters	.305	centimeters	inches	.394
yards	meters	.914	meters	feet	3.280
miles	kilometers	1.609	meters	yards	1.094
square inches	square centimeters	6.451	kilometers	miles	.621
square feet	square meters	.093	square centimeters	square inches	.155
square yards	square meters	.836	square meters	square feet	10.764
square miles	square kilometers	2.590	square meters	square yards	1.196
acres	square hectometers	.405	square kilometers	square miles	.386
cubic feet	cubic meters	.028	square hectometers	acres	2.471
cubic yards	cubic meters	.765	cubic meters	cubic feet	35.315
fluid ounces	milliliters	29.573	cubic meters	cubic yards	1.308
pints	liters	.473	milliliters	fluid ounces	.034
quarts	liters	.946	liters	pints	2.113
gallons	liters	3.785	liters	quarts	1.057
ounces	grams	28.349	liters	gallons	.264
pounds	kilograms	.454	grams	ounces	.035
short tons	metric tons	.907	kilograms	pounds	2.205
pound-feet	newton-meters	1.356	metric tons	short tons	1.102
pound-inches	newton-meters	.11296			

Temperature (Exact)

°F	Fahrenheit	5/9 (after	Celsius	°C
	temperature	subtracting 32)	temperature	

PIN: 005803-001